

Suicide

and Self-Inflicted Injuries in South Carolina

2018 DATA

White males age 45 to 64 are the most at-risk group

SUICIDE RATES AT A GLANCE



In the United States, South Carolina ranks 27th in the nation in suicide rates, 18th in teen suicides ages 12-19, and 29th in drug-related suicides.



Suicide is the **11th leading cause of death** in the state.



The South Carolina suicide rate is **51% higher than the Healthy People 2020 target** and **8% higher than the national rate**.

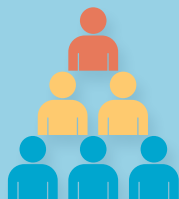


The suicide rate in SC has increased by 18% in ten years (2009-2018). The number of suicide deaths have increased 33% in ten years (2009-2018).



Suicide deaths **have doubled since 1999** from 419 to 811 statewide.

THE IMPACT OF SELF-INFLICTED INJURIES



Every day in South Carolina, two people die by suicide, nine visit the Emergency Department, and five are admitted to the hospital for intentional self-harm injuries.

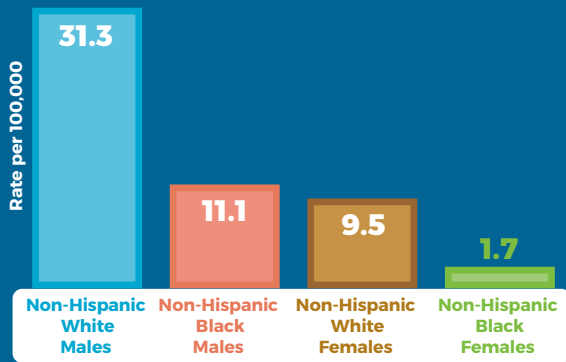


Hospital and ED charges for self-inflicted injuries in 2018 included:

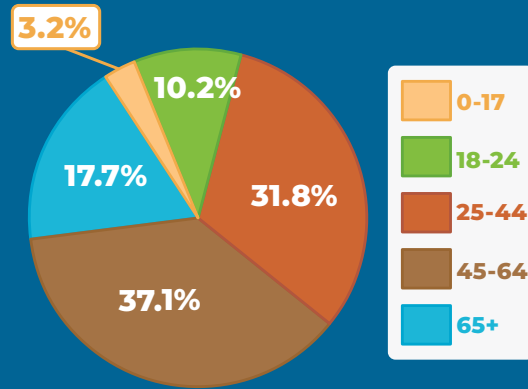
- **\$74.8 million** in Hospital Inpatient charges
- **\$18.7 million** in ED charges.

SOUTH CAROLINA BY THE NUMBERS

Suicide by Sex and Race 2014-2018

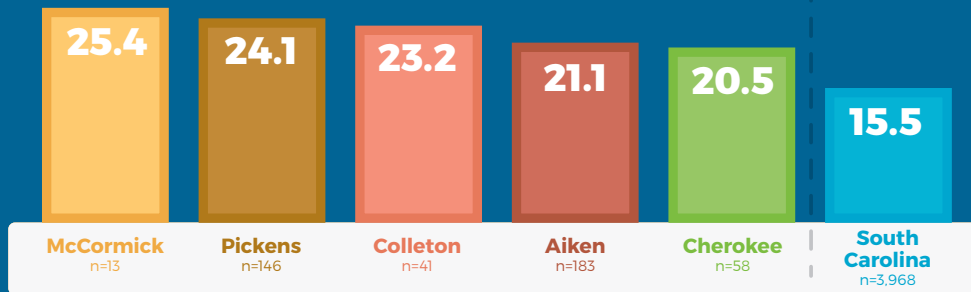


Suicide by Age 2014-2018

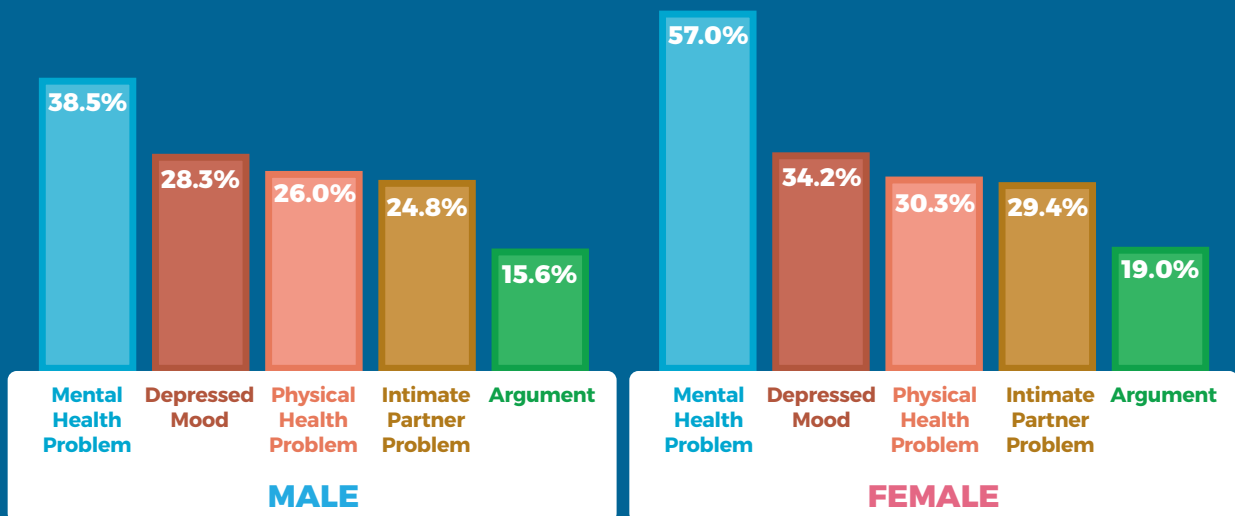


Counties with Highest Suicide Death Rates (2014-2018)

(Highest combined 5-year Suicide rate per 100,000 population)



Most Common Circumstances Related to Suicide (2016-2018)



scdhec.gov

CR-012365 8/21

Data Sources:

- WISQARS - Web-based Injury Statistics Query and Reporting System
- SCDHEC Vital Records - South Carolina Department of Health and Environmental Control Vital Records
- SCVDRS - South Carolina Violent Death Reporting System
- RFA Hospital Discharge Data - South Carolina Revenue and Fiscal Affairs Office Hospital Discharge Data

