

Kennedy

Consulting **KCS** Services, LLC

P.O. Box 364
Irmo, SC 29063
Tel. 803.399.1133

403 Seaside Ct
Lexington, SC 29072
Cell 803.960.2562

craigkennedy.KCS@gmail.com

June 1, 2017

Mr. Ed Haigler, Project Manager
SC Department of Health and Env Control
Division of Mining and Solid Waste Mgmt
2600 Bull Street
Columbia, SC 29201

RE: Response to Request for Supplemental Information on Make Up Water Pumping Station
Culclasure Farm Tract, LLC
Proposed Culclasure Farm Mine, Mine Permit Appl I-002093

Dear Mr. Haigler:

Please find below and attached supplemental information requested in your May 22, 2017 email. As developed by Howiler and Associates, attached is a revised *Initial Infrastructure Development Map* (DWG No. 2 of 7, revised 5/24/17) showing the information requested. The below information is a synopsis of the information on the revised drawing.

Plant Freshwater Makeup Pumping Station

Excavate approximately 20'x40'x6' deep pump hole in wetlands. The excavate material to be hauled out with no fill to be placed in wetlands. (See Section G-G' on DWG NO. 2 of 7 rev 5/24/17). A 6" or 8' self-priming centrifugal pump with 30-40 hp motor on floating steel barge delivering 600-800 GMP (1.35 -- 1.8 CFS) will be used to supply water to make-up water pond. The pump will use a 6" or 8" suction line with foot valve and +/- 1/4" mesh in-take screen.

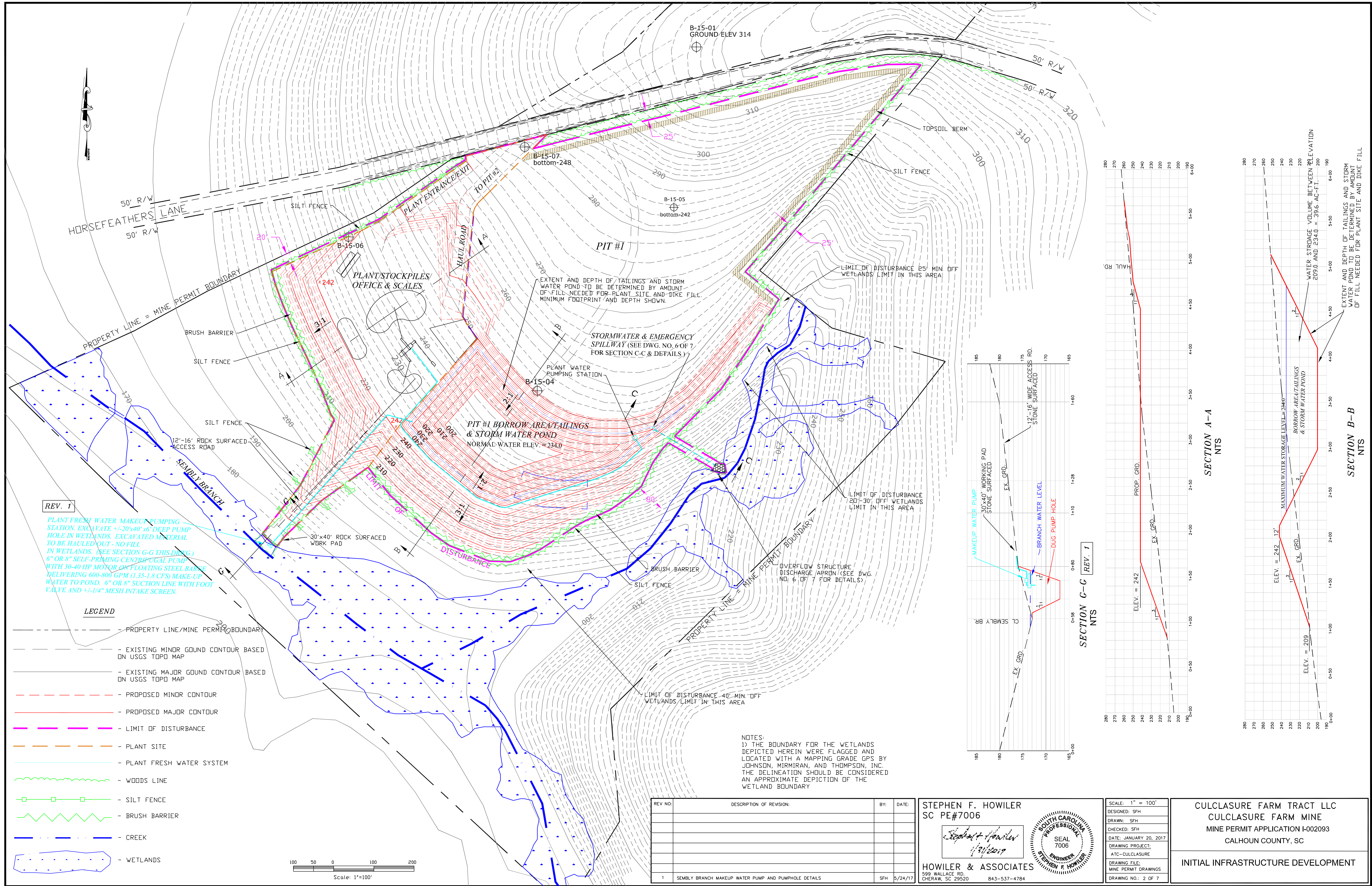
As shown on the drawing, the Pit #1 tailings/stormwater pond will store the make-up water. To provide enough water to operate it will take several months pumping up to, but no more than 3,000,000 gallons/month from the pump hole. Also during this time, stormwater will be diverted to the pond for storage. Once the pond reaches maximum capacity and sand washing operations begin, the need to pump and store water from the pump hole is estimated to be 5 - 10 hours per week.

Sincerely,



Craig Kennedy, PG
KCS Principal

cc Tom Rowland
Thomas Gordon

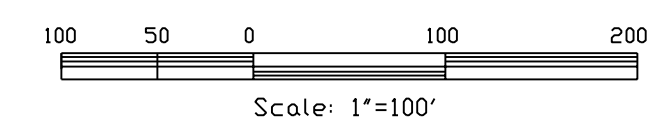


REV. 1

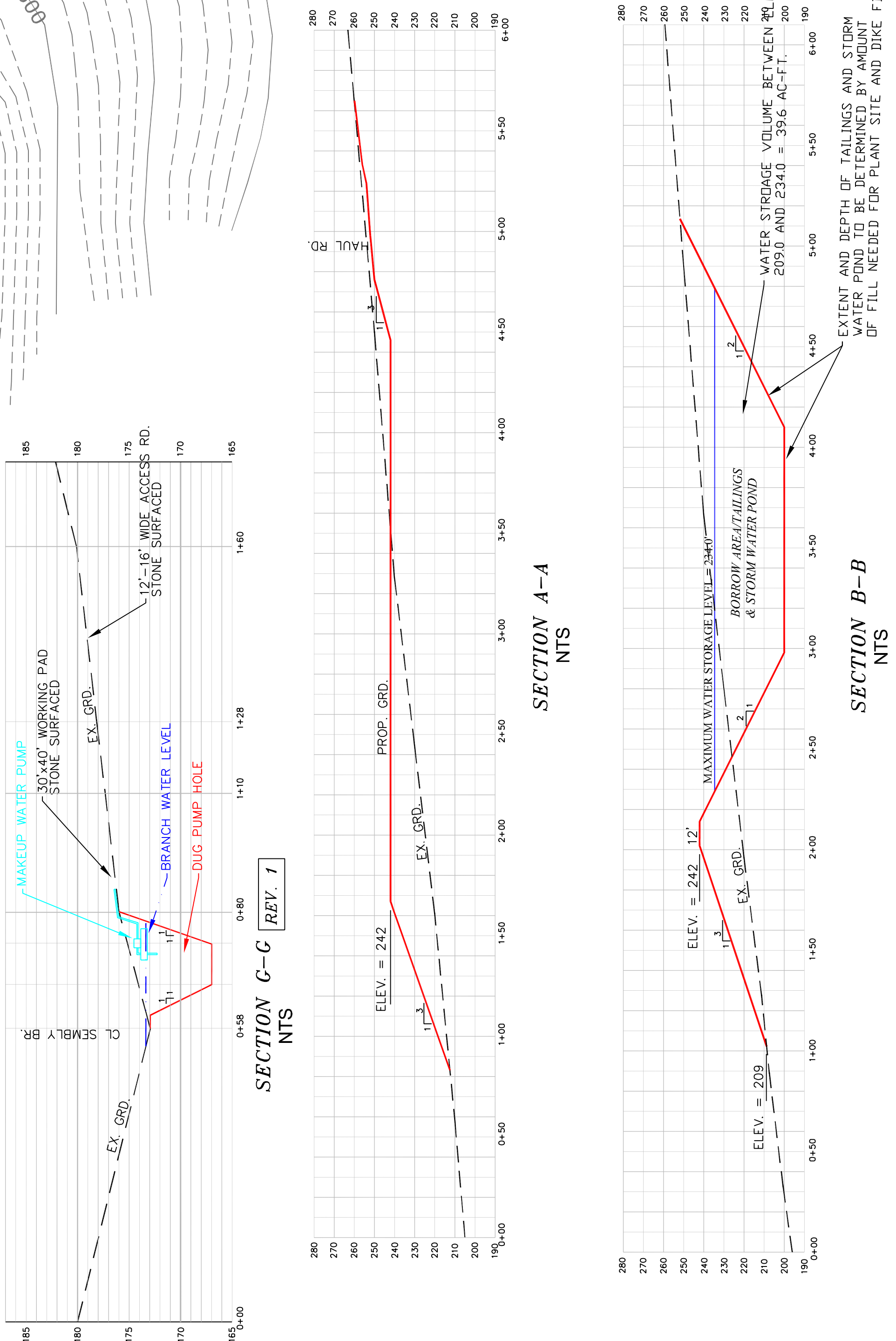
PLANT FRESH WATER MAKEUP PUMPING STATION. EXCAVATE ~6'20"x40"x6' DEEP PUMP HOLE IN WETLANDS. EXCAVATED MATERIAL TO BE HAULED OUT - NO FILL IN WETLANDS. (SEE SECTION G-G THIS DRAWING) 6" OR 8" SELF-PRIMING CENTRIFUGAL PUMP WITH 30-40 HP MOTOR ON FLOATING STEEL BARGE DELIVERING 600-800 GPM (1.35-1.8 CFS) MAKE-UP WATER TO POND. 6" OR 8" SUCTION LINE WITH FOOT VALVE AND 1/4" MESH INTAKE SCREEN.

LEGEND

- - - PROPERTY LINE/MINE PERMIT BOUNDARY
- - - EXISTING MINOR GROUND CONTOUR BASED ON USGS TOPO MAP
- - - EXISTING MAJOR GROUND CONTOUR BASED ON USGS TOPO MAP
- - - PROPOSED MINOR CONTOUR
- - - PROPOSED MAJOR CONTOUR
- - - LIMIT OF DISTURBANCE
- - - PLANT SITE
- - - PLANT FRESH WATER SYSTEM
- - - WOODS LINE
- - - SILT FENCE
- - - BRUSH BARRIER
- - - CREEK
- - - WETLANDS



NOTES:
 1) THE BOUNDARY FOR THE WETLANDS DEPICTED HEREIN WERE FLAGGED AND LOCATED WITH A MAPPING GRADE GPS BY JOHNSON, MIRMIRAN, AND THOMPSON, INC. THE DELINEATION SHOULD BE CONSIDERED AN APPROXIMATE DEPICTION OF THE WETLAND BOUNDARY



REV NO:	DESCRIPTION OF REVISION:	BY:	DATE:
1	SEMBLY BRANCH MAKEUP WATER PUMP AND PUMPHOLE DETAILS	SFH	5/24/17

STEPHEN F. HOWLER
 SC PE#7006

HOWLER & ASSOCIATES
 599 WALLACE RD.
 CHERAW, SC 29520 843-537-4784

SCALE: 1" = 100'

DESIGNED:	SFH
DRAWN:	SFH
CHECKED:	SFH
DATE:	JANUARY 20, 2017
DRAWING PROJECT:	ATC-CULCLASURE
DRAWING FILE:	MINE PERMIT DRAWINGS
DRAWING NO.:	2 OF 7

CULCLASURE FARM TRACT LLC
CULCLASURE FARM MINE
 MINE PERMIT APPLICATION I-002093
 CALHOUN COUNTY, SC

INITIAL INFRASTRUCTURE DEVELOPMENT

Culclasure - Response to Supplemental Information Request

[Craig Kennedy <craigkennedy.kcs@gmail.com>](mailto:craigkennedy.kcs@gmail.com)

Fri 6/2/2017 7:25 AM

To: Haigler, W. Ed <haiglewe@dhec.sc.gov>;

Cc: Tom Rowland <tcr@americantimberlands.com>; Thomas Gordon <trg@willowoakquarry.com>;

 2 attachments (557 KB)

Culclasure Response to Supplemental Info Request - Make-up Water Pumping Station.pdf; DWG. NO. 2 OF 7- Initial Infrastructure Development-REV.5'24'17.pdf;

Ed,

Please find attached the response to DHEC's request for supplemental information on Culclasure's plans for providing make-up water for the process plant. We revised DWG. NO. 2 of 7 - Initial infrastructure Development - REV 5'24'17 of the map set. Please replace the previous drawing with this revision.

Please feel free to contact me if you have any questions.

Craig

--

Craig Kennedy, P.G.

Kennedy Consulting Services, LLC

[P.O. Box 364](#)

[Irmo, SC 29063](#)

Telephone: 803.399.1133

Cell: 803.960.2562

e-mail: craigkennedy.KCS@gmail.com

CONFIDENTIAL STATEMENT

This electronic message contains information from Kennedy Consulting Services, LLC and is confidential or privileged. The information is intended to be for the use of the individual or entity named above. If you are not the intended recipient, be aware that any disclosure, copying, distribution or use of the contents of this message is prohibited. If you have received this electronic message in error, please notify me immediately by telephone at 803-399-1133