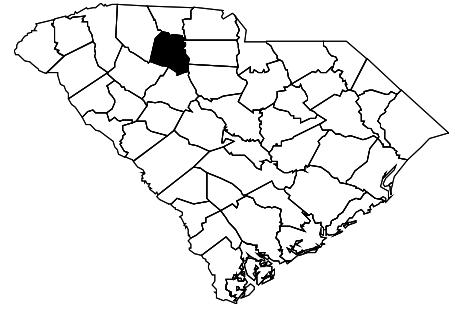




# Diabetes In Union County, 2012



Produced by the South Carolina Department of Health and Environmental Control

## Impact of Diabetes in the United States

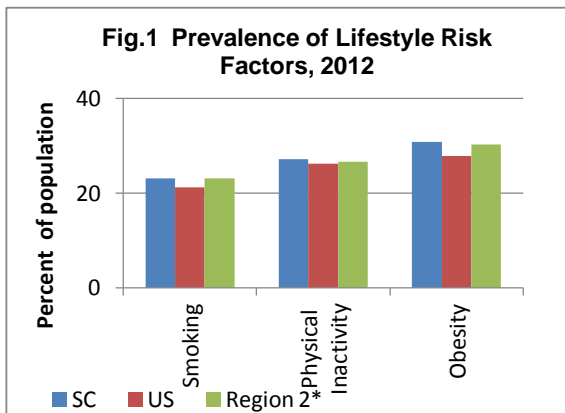
- Diabetes affects 25.8 million Americans and contributes to approximately 231,000 deaths a year.
- Diabetes is becoming more common in the United States. From 1980 through 2011, the number of Americans with diagnosed diabetes has more than tripled (from 5.6 million to 20.9 million).
- The direct and indirect costs of diabetes in the U.S. were nearly \$174 billion in 2008.
- 69,701 people died of diabetes in the U.S. in 2010.

## Diabetes in South Carolina

- Approximately 421,549 adults in South Carolina are diagnosed with diabetes. African Americans have a 42% higher prevalence than Whites.
- The total direct costs of hospitalizations and emergency room visits were over \$4.7 billion in 2012.
- Diabetes is the seventh leading cause of death in South Carolina, claiming 1,186 lives in 2012

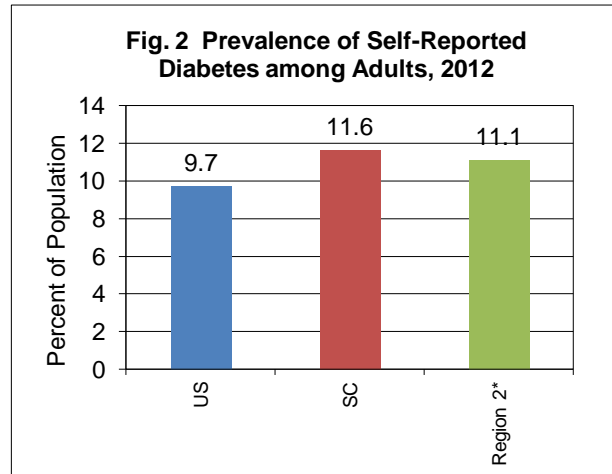
## Behavioral Risk Factors

- Major behavioral risk factors, such as obesity and physical inactivity are partially responsible for development of type 2 diabetes (Fig 1).



## Diabetes Prevalence

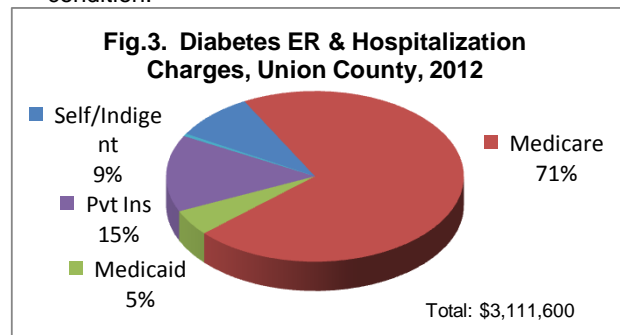
- An estimated 11.1% of adults in Union County suffer annually from diabetes (Fig 2).



\*County-level BRFSS not available for 2012.

## Hospital and Emergency Room Discharges

- In 2012, there were 112 hospitalizations for diabetes in Union County for all ages.
- There were an additional 1091 hospital discharges with diabetes-related conditions in Union County.
- In 2012, there were 107 emergency room (ER) visits for diabetes as the primary diagnosis, among which 57 (53%) were by African-American patients.
- There were 525 ER visits for diabetes as a related condition.



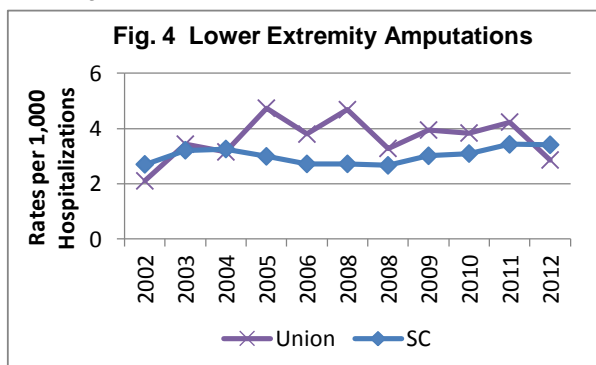
- Medicare paid for 71% of the ER and Hospitalization charges in Union County (Fig 3).

## Complications

- 43% of patients hospitalized in SC for diabetes had complications in 2012; 37% of hospitalizations in Union County (Table 1).
- In 2011, more than 74% of people in SC with diabetes had hypertension, compared with only 30% of people without diabetes.

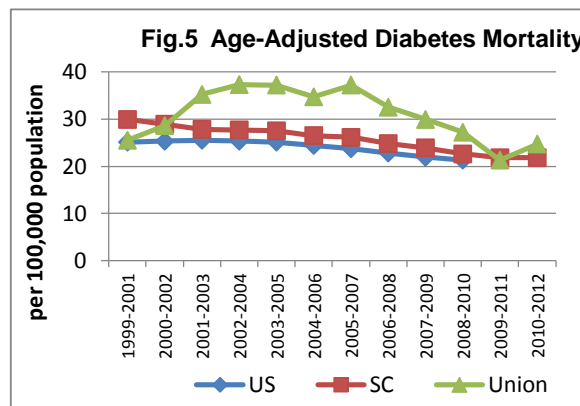
Diabetes Complication	Hospital Admissions	Percent of Diabetes Hospital Admissions	Total Charges
Renal Failure	336	29%	\$10,723,000
Lower Extremity Amputation	13	1%	\$662,200
Ketoacidosis	38	3%	\$944,600
Retinopathy	42	4%	\$1,215,500

- In 2011, more than 67% of people with diabetes had high cholesterol.
- 2012, the rates for lower extremity amputations among blacks in SC were 3times the rates among whites.



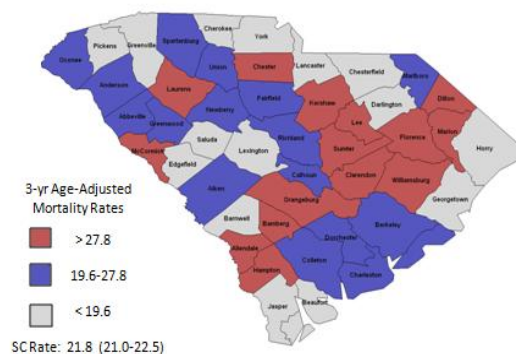
## Mortality

- Diabetes is the fifth leading cause of death in Union County.
- A total of 13 people in Union County died from diabetes in 2012.



- The Union County mortality rate was 34.6/100,000 in 2012, above the state average.
- Union County ranks #22 in diabetes mortality in South Carolina 2010-2012.

Fig. 6 Diabetes Mortality 2010-2012



### For More Information about diabetes contact:

Division of Diabetes, Heart Disease, Obesity and School Health  
DHEC Bureau of Community Health and Chronic Disease Prevention

<http://www.dhec.sc.gov/health/chcdp/diabetes/index.htm>

(803) 898-1635



Diabetes Initiative of South Carolina

<http://www.musc.edu/diabetes/>

Generated by: Division of Chronic Disease Epidemiology,  
Bureau of Community Health and Chronic Disease Prevention

[http://www.scdhec.gov/hs/epidata/state\\_reports.htm](http://www.scdhec.gov/hs/epidata/state_reports.htm)

### Data Sources:

#### Behavioral Risk Factors and Diabetes Prevalence:

SC BRFSS

<http://www.scdhec.gov/administration/phsis/biostatistics/brfss/>

#### Mortality Data:

Vital Statistics, DHEC Division of Biostatistics 803-898-3627



#### Hospital Discharges and ER Visits:

Office of Research and Statistics SC  
Budget and Control Board (803) 898-9940



For more details, please view the Technical Document below  
[www.scdhec.gov/health/epidata/docs/EpiTechNotes.pdf](http://www.scdhec.gov/health/epidata/docs/EpiTechNotes.pdf)