



Flu Watch

MMWR Week 22
May 26-June 1, 2013

Summer Edition

South Carolina Department of Health and Environmental Control
Division of Acute Disease Epidemiology

Contents

Summary.....1

ILINet.....2

Positive Confirmatory Tests.....3

Positive rapid tests.....4

Hospitalizations and deaths....4

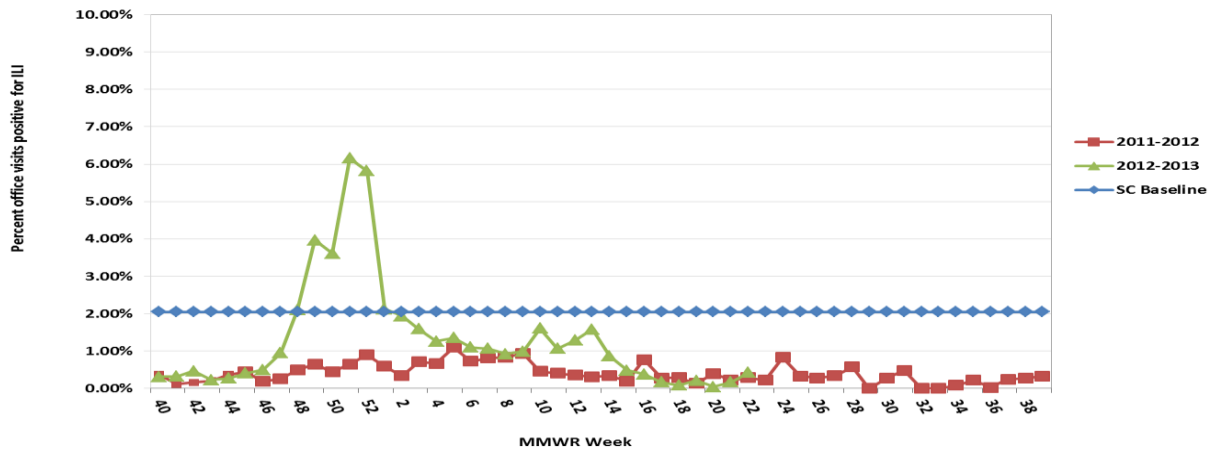
Current influenza activity level: NO ACTIVITY

All data are provisional and may change as new reports are received.

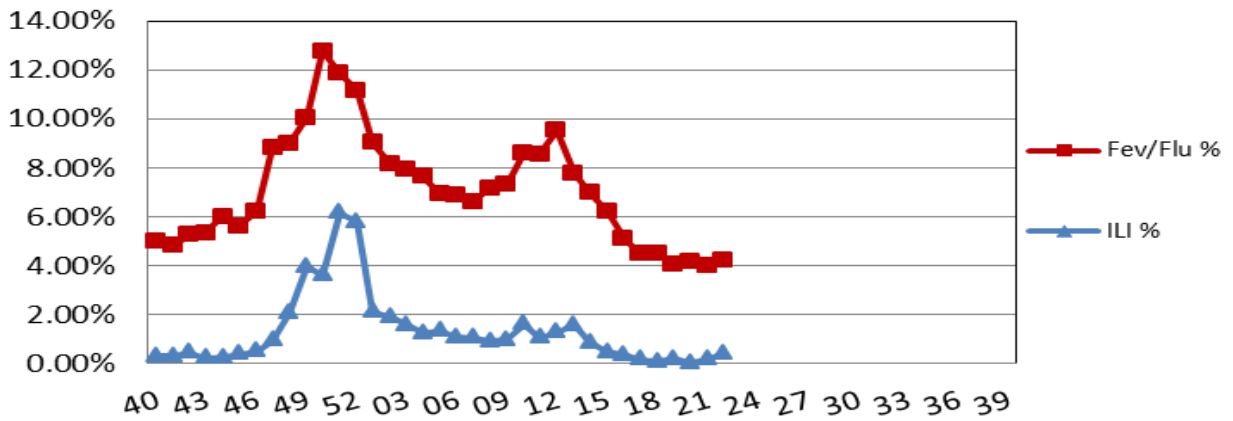
ILI Activity, Positive Confirmatory Tests, Influenza Associated Hospitalizations and Deaths, and Positive Rapid Tests

	<i>Previous week</i>	<i>Current week</i>	▲	Cumulative (9/30/12-6/1/13)
Visits for ILI to ILINet providers (%)	.17	.42	▲ .25	NA
Positive confirmatory tests	0	0	0	1178
Lab confirmed flu hospitalizations	0	0	0	1720
Lab confirmed flu deaths	0	0	0	46
Positive rapid tests	25	10	▼ 15	58,692

**Percentage of Visits for Influenza-like Illness (ILI) Reported by Sentinel Providers in South Carolina
2011-2012 and 2012-2013 Influenza Seasons**

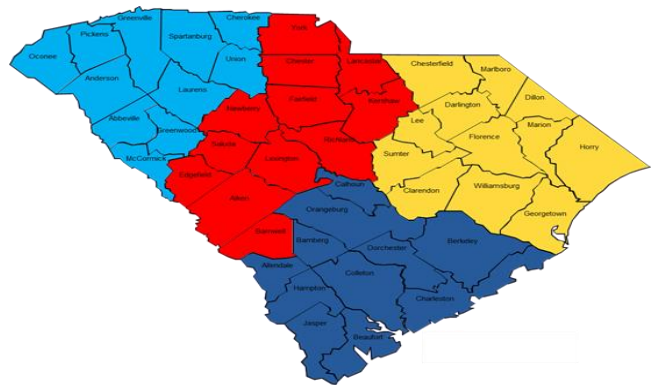


**SC Fever Flu Percentage Compared to ILI Percentage
September 30, 2012 - June 1, 2013**

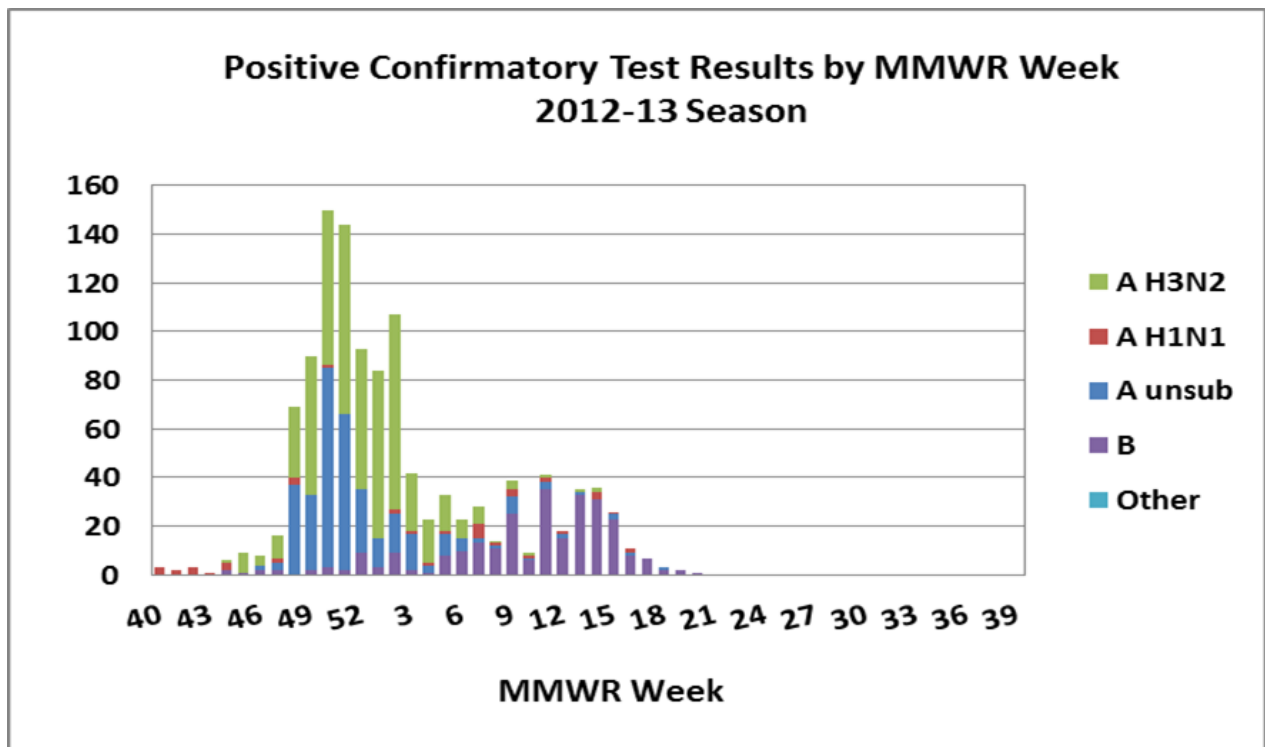


ILI Percentage by Geographic Region

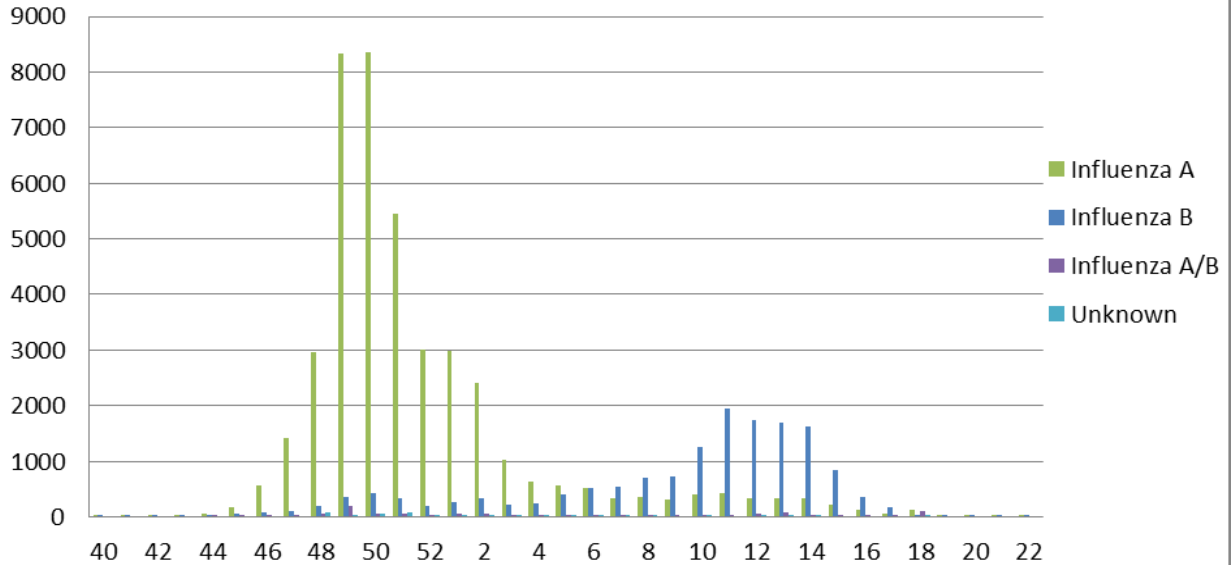
Geographic Region	ILI %	# of Reporters
Upstate	.09	4
Midlands	0	3
Pee Dee	1.70	2
Low Country	NA	0



<i>Positive confirmatory influenza test results*</i>		
<i>Cumulative (09/30/12 – 6/1/13)</i>		
	BOL	Other clinical labs
Number of specimens tested	547	NA
Number of positive specimens	319 (58.3%)	859
Influenza A unsubtype		325 (37.8%)
Influenza A H1N1	24 (7.5%)	19 (2.2)
Influenza A H3N2	245 (76.8%)	311 (36.2%)
Influenza B	50 (15.7%)	201 (23.4%)
Other		3 (.35%)



Positive Rapid Tests by MMWR Week and Type



Laboratory Confirmed Influenza Case rate/100,000 Hospitalizations (n=1720) and Deaths (n=46) by age group September 30, 2012 - June 1, 2013

