



# Flu Watch

MMWR Week 29  
July 14 - July 20, 2013

Summer Edition

South Carolina Department of Health and Environmental Control  
Division of Acute Disease Epidemiology

## Contents

Summary.....1

ILINet.....2

Positive Confirmatory Tests.....3

Positive rapid tests.....4

Hospitalizations and deaths....4

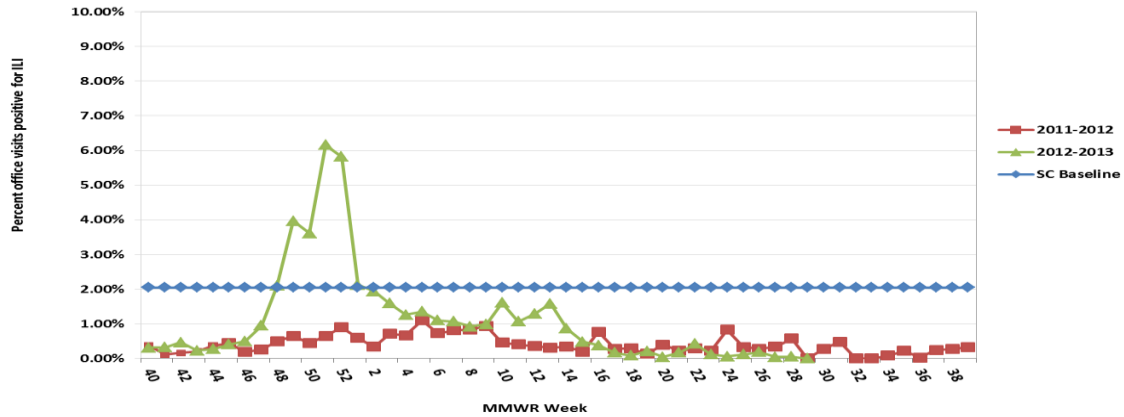
**Current influenza activity level: NO ACTIVITY**

*All data are provisional and may change as new reports are received.*

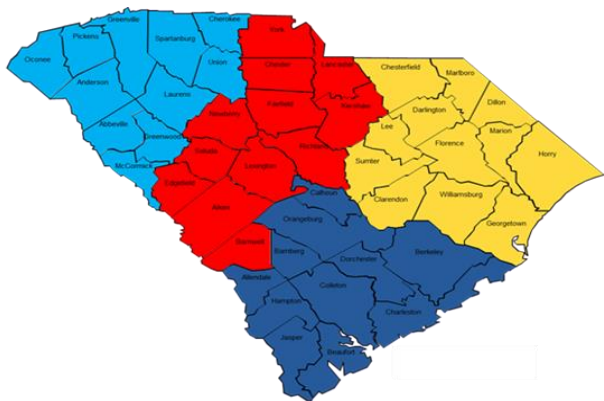
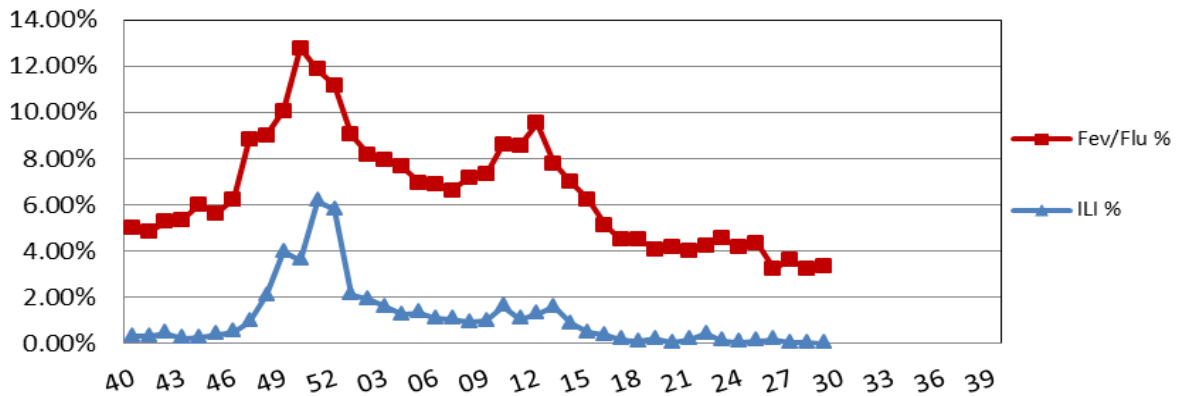
**ILI Activity, Positive Confirmatory Tests, Influenza Associated Hospitalizations and Deaths, and Positive Rapid Tests**

	<i>Previous week</i>	<i>Current week</i>	$\Delta$	Cumulative (9/30/12-7/20/13)
Visits for ILI to ILINet providers (%)	.05	0	▼ .05	NA
Positive confirmatory tests	1	1	0	1180
Lab confirmed flu hospitalizations	0	0	0	1721
Lab confirmed flu deaths	0	0	0	46
Positive rapid tests	3	2	▼ 1	63,706

**Percentage of Visits for Influenza-like Illness (ILI) Reported by Sentinel Providers in South Carolina  
2011-2012 and 2012-2013 Influenza Seasons**



**SC Fever Flu Percentage Compared to ILI Percentage  
September 30, 2012 - July 20, 2013**



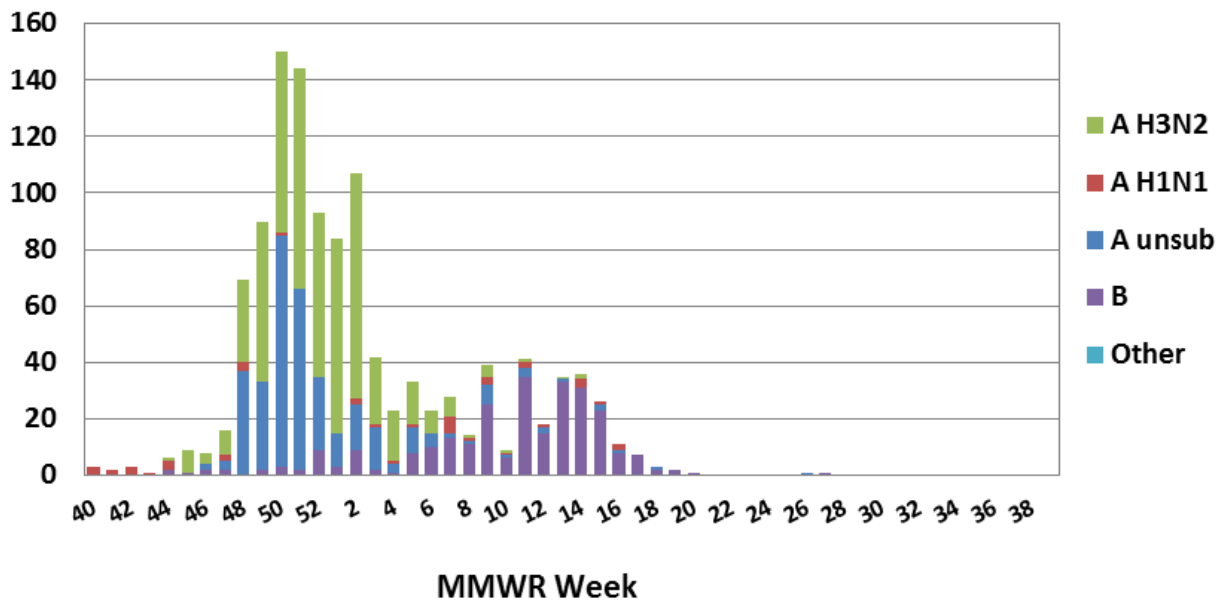
**ILI Percentage by Geographic Region**

Geographic Region	ILI %	# of Reporters
Upstate	0	4
Midlands	0	1
Pee Dee	0	1
Low Country	NA	0

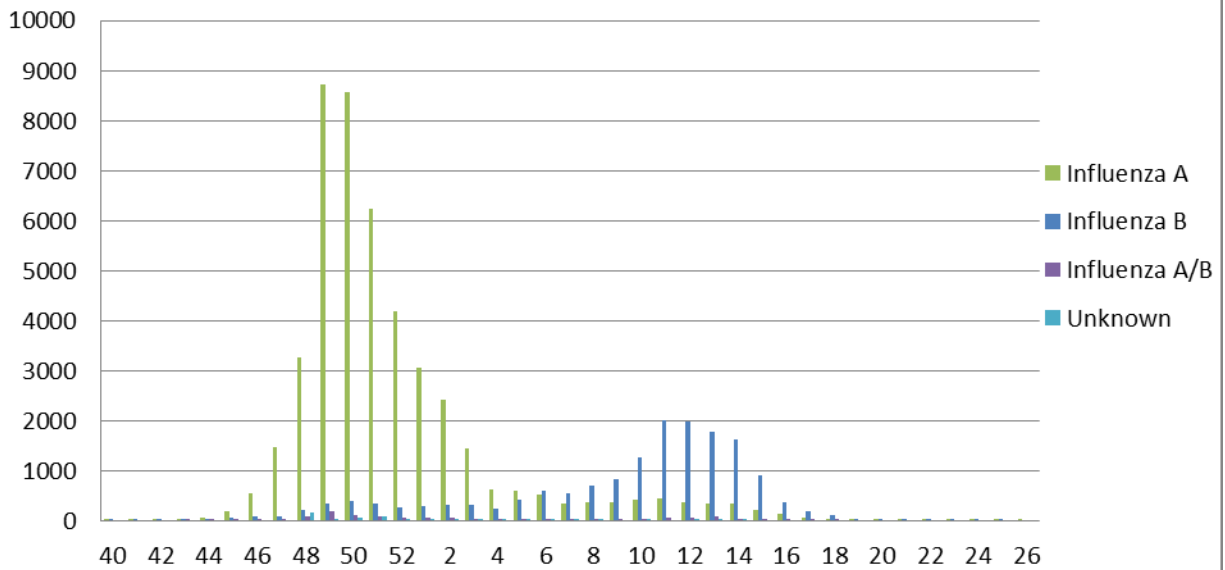
**Positive confirmatory influenza test results\***  
**Cumulative (09/30/12 – 7/20/13)**

	BOL	Other clinical labs
Number of specimens tested	572	NA
Number of positive specimens	306 (57.1%)	896
Influenza A unsubtype		333 (37.2%)
Influenza A H1N1	24 (7.8%)	19 (2.1)
Influenza A H3N2	233 (76.1%)	315 (35.2%)
Influenza B	49 (16%)	226 (25.2%)
Other		3 (.33%)

**Positive Confirmatory Test Results by MMWR Week 2012-13  
Season**



## Positive Rapid Tests by MMWR Week and Type



## Laboratory Confirmed Influenza Case rate/100,000 Hospitalizations (n=1721) and Deaths (n=46) by age group September 30, 2012 - July 20, 2013

