



# Flu Watch

MMWR Week 31  
July 28 – August 3, 2013

Summer Edition

South Carolina Department of Health and Environmental Control  
Division of Acute Disease Epidemiology

*Contents*

*Summary.....1*

*ILINet.....2*

*Positive Confirmatory Tests.....3*

*Positive rapid tests.....4*

*Hospitalizations and deaths....4*

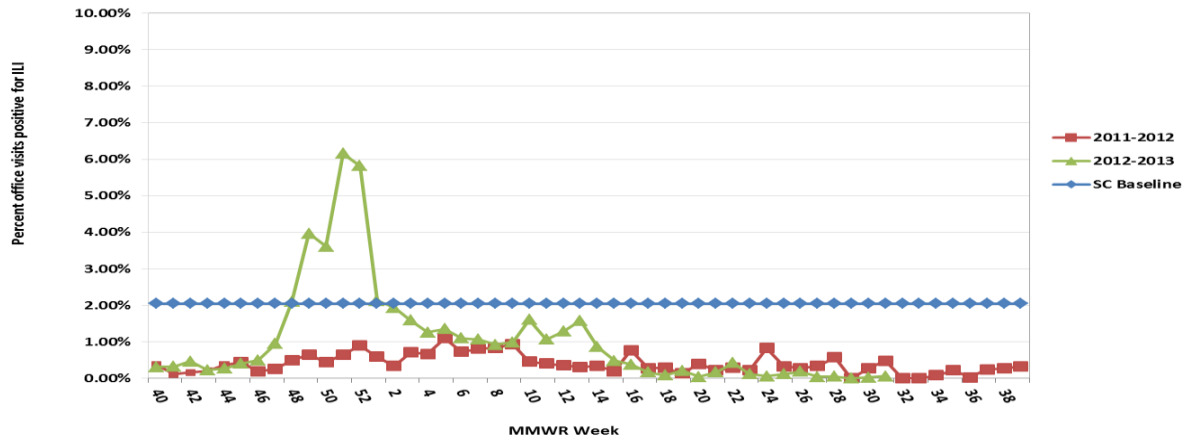
**Current influenza activity level: NO ACTIVITY**

*All data are provisional and may change as new reports are received.*

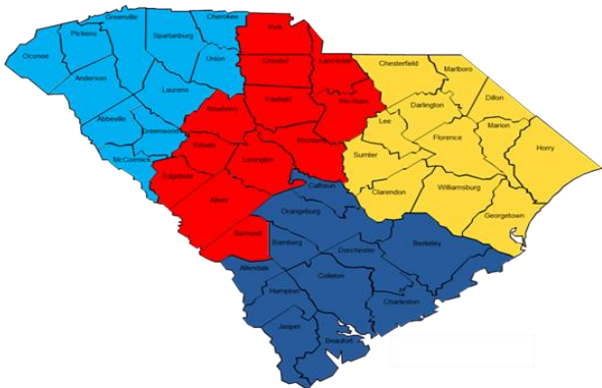
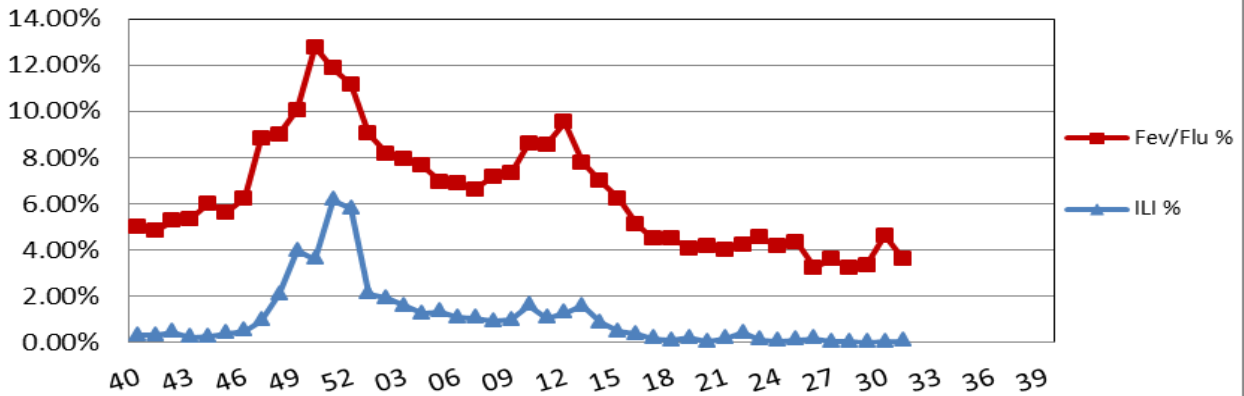
**ILI Activity, Positive Confirmatory Tests, Influenza Associated Hospitalizations and Deaths, and Positive Rapid Tests**

	<i>Previous week</i>	<i>Current week</i>	$\Delta$	<i>Cumulative (9/30/12-8/3/13)</i>
Visits for ILI to ILINet providers (%)	.03	.06	▲ .03	NA
Positive confirmatory tests	0	0	0	1180
Lab confirmed flu hospitalizations	0	0	0	1721
Lab confirmed flu deaths	0	0	0	46
Positive rapid tests	1	0	▼ 1	63,707

**Percentage of Visits for Influenza-like Illness (ILI) Reported by Sentinel Providers in South Carolina  
2011-2012 and 2012-2013 Influenza Seasons**



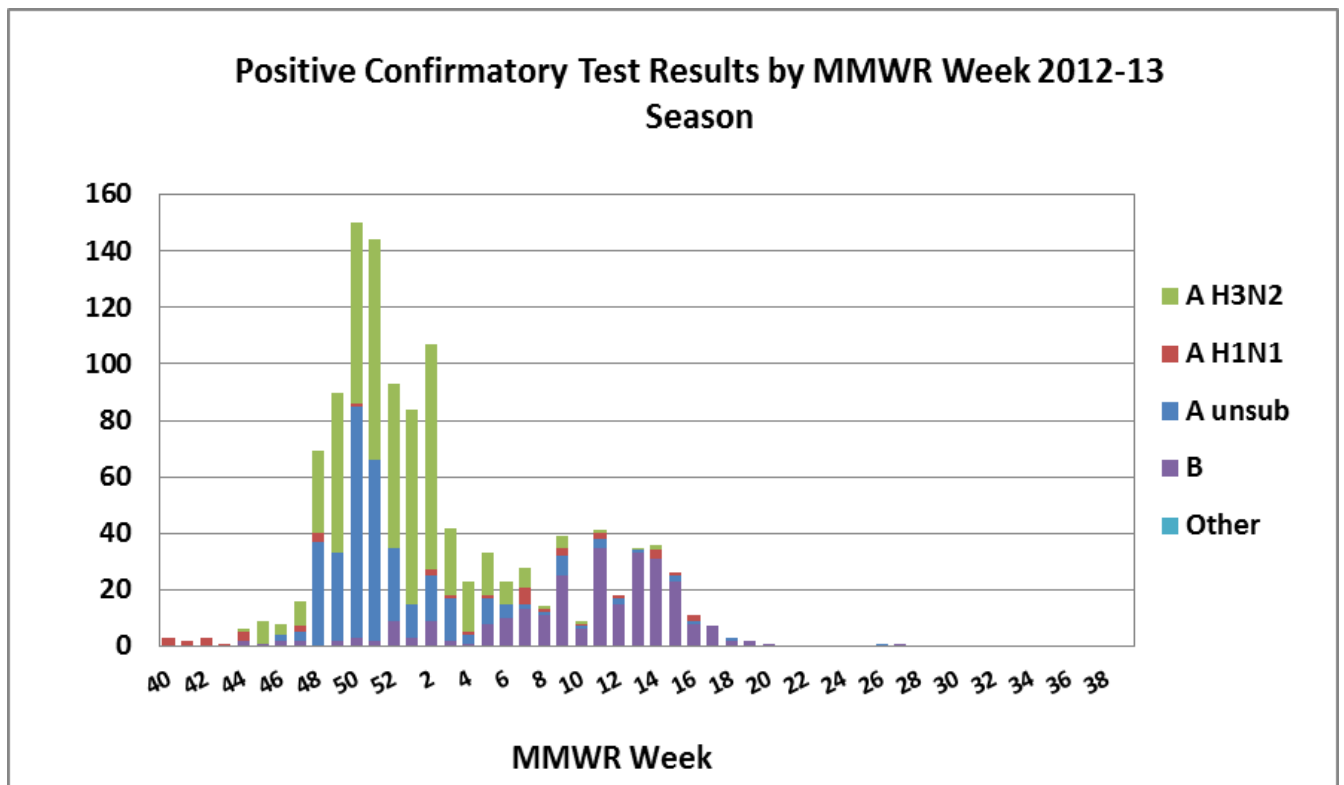
**SC Fever Flu Percentage Compared to ILI Percentage  
September 30, 2012 - August 3, 2013**



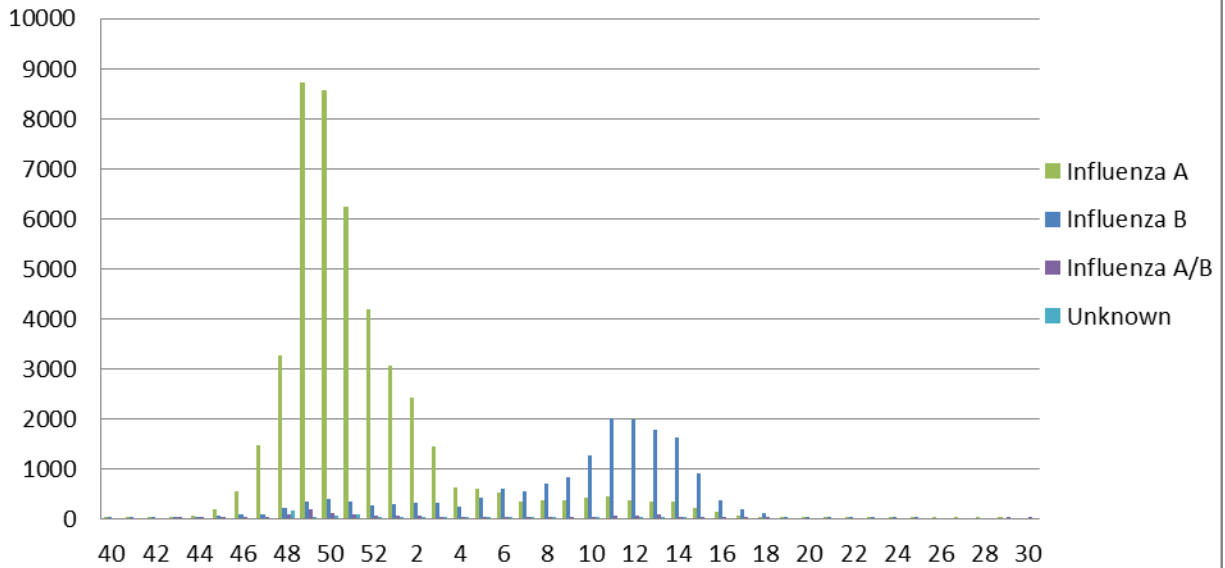
**ILI Percentage by Geographic Region**

Geographic Region	ILI %	# of Reporters
Upstate	0	4
Midlands	0	1
Pee Dee	.55	1
Low Country	NA	0

<i>Positive confirmatory influenza test results* Cumulative (09/30/12 – 8/3/13)</i>		
	<b>BOL</b>	<b>Other clinical labs</b>
<b>Number of specimens tested</b>	576	NA
<b>Number of positive specimens</b>	306 (53.1%)	896
<b>Influenza A unsubtype</b>		333 (37.2%)
<b>Influenza A H1N1</b>	24 (7.8%)	19 (2.1)
<b>Influenza A H3N2</b>	233 (76.1%)	315 (35.2%)
<b>Influenza B</b>	49 (16%)	226 (25.2%)
<b>Other</b>		3 (.33%)



## Positive Rapid Tests by MMWR Week and Type



## Laboratory Confirmed Influenza Case rate/100,000 Hospitalizations (n=1721) and Deaths (n=46) by age group September 30, 2012 - August 3, 2013

