

03040201-08

(*Great Pee Dee River*)

General Description

Watershed 03040201-08 is located in Marlboro, Darlington, and Florence Counties and consists primarily of the *Great Pee Dee River* and its tributaries from Cedar Creek to Black Creek. The watershed occupies 214,121 acres of the Upper and Lower Coastal Plain regions of South Carolina. Land use/land cover in the watershed includes: 42.8% forested wetland, 25.7% agricultural land, 23.3% forested land, 4.0% urban land, 2.6% nonforested wetland, 1.4% water, and 0.2% barren land.

This section of the Great Pee Dee River accepts drainage from its upper reaches, along with Buckholtz Creek (Lake Darpo or Spring Lake), Muddy Creek (Machine Branch, Riggins Branch, Lake Creek, Henegan Lake), and Flat Creek. Cottingham Creek (Covington Millpond, Sandy Ocean, Carters Branch) originates near the City of Bennettsville and joins with Hagins Prong to form the headwaters of Three Creeks (Monroe Branch, Drakes Millpond, Big Branch), which flows into the river downstream of Flat Creek. Another Flat Creek enters the system next, followed by Rogers Creek (Mosey Bay, Wilson Bay, Burnt Bay), Hurricane Branch, and Back Swamp (Fountain Branch, Alligator Creek, Louthers Lake). There are a total of 418.9 stream miles and 719.1 acres of lake waters in this watershed, all classified FW.

Surface Water Quality

<u>Station #</u>	<u>Type</u>	<u>Class</u>	<u>Description</u>
PD-637	BIO	FW	BUCKHOLTZ CREEK AT DIRT RD OFF COUNTY RD 656
PD-336	W	FW	HAGINS PRONG AT SCR 381
PD-341	W	FW	THREE CREEKS AT SC 381 AT BLENHEIM
PD-367	INT	FW	THREE CREEKS AT SC 38, S OF BLENHEIM
RS-08069	RS08	FW	THREE CREEKS AT S-35-18 AT SHARP TURN IN ROAD
RS-07201	RS07	FW	ROGERS CREEK AT S-35-18, 6MI S OF BLENHEIM
PD-028	INT	FW	GREAT PEE DEE RIVER AT SC 34 11 MI NE OF DARLINGTON

Buckholtz Creek (PD-637) - Aquatic life uses are partially supported based on macroinvertebrate community data.

Hagins Prong (PD-336) – Aquatic life uses are fully supported. This is a blackwater system, characterized by naturally low pH and dissolved oxygen conditions. Although dissolved oxygen and pH excursions occurred, they were typical of values seen in blackwater systems and were considered natural, not standards violations. Recreational uses are partially supported due to fecal coliform excursions.

Three Creeks – There are three SCDHEC monitoring sites along Three Creeks. This is a blackwater system, characterized by naturally low pH and dissolved oxygen conditions. Although pH and dissolved oxygen excursions occurred at all sites, they were typical of values seen in blackwater systems and were considered natural, not standards violations. Aquatic life and recreational uses are fully supported at ***PD-341***, ***PD-367***, and ***RS-08069***. There is a significant increasing trend in pH at midstream site ***PD-367***.

Rogers Creek (RS-07201) - Aquatic life and recreational uses are fully supported.

Great Pee Dee River (PD-028) - Aquatic life uses are fully supported; however, there are significant decreasing trends in dissolved oxygen concentration and increasing trends in five-day biochemical oxygen demand. There is a significant decreasing trend in pH. A significant decreasing trend in total phosphorus concentration suggests improving conditions for this parameter. Recreational uses are partially supported due to fecal coliform bacteria excursions.

*A fish consumption advisory has been issued by the Department for mercury and includes the **Great Pee Dee River** and **Louthers Lake** within this watershed (see advisory p.144).*

Natural Swimming Areas

<i>FACILITY NAME</i>	<i>PERMIT #</i>
<i>RECEIVING STREAM</i>	<i>STATUS</i>
LAKE DARPO	16-N05
LAKE DARPO	ACTIVE

NPDES Program

Active NPDES Facilities

<i>RECEIVING STREAM</i>	<i>NPDES#</i>
<i>FACILITY NAME</i>	<i>TYPE</i>
GREAT PEE DEE RIVER	SC0001996
MOHAWK INDUSTRIES/OAK RIVER PLANT	MINOR INDUSTRIAL
ROGERS CREEK TRIBUTARY	SCG730468
HANSON AGGREGATES SE/BROWNSVILLE	MINOR INDUSTRIAL
HAGINS PRONG	SC0040606
TOWN OF CLIO WWTF	MINOR DOMESTIC
HAGINS PRONG TRIBUTARY	SCG250256
BALDOR ELECTRIC CO.	MINOR INDUSTRIAL

Municipal Separate Storm Sewer Systems (MS4)

<i>RECEIVING STREAM</i>	<i>NPDES#</i>
<i>MUNICIPALITY</i>	<i>MS4 PHASE</i>
<i>RESPONSIBLE PARTY</i>	<i>MS4 SIZE</i>
<i>IMPLEMENTING PARTY</i>	
GREAT PEE DEE RIVER	SCR034102
UNINCORPORATED AREAS	PHASE II
FLORENCE COUNTY	SMALL MS4
FLORENCE COUNTY	

Nonpoint Source Management Program

Land Disposal Activities

Landfill Facilities

<i>LANDFILL NAME</i>	<i>PERMIT #</i>
<i>FACILITY TYPE</i>	<i>STATUS</i>
CITY OF BENNETTSVILLE TRANSFER STA.	351002-6001
MUNICIPAL	ACTIVE

MARLBORO COUNTY INDUSTRIAL	351001-1601 INACTIVE
MARLBORO COUNTY COMPOSTING FACILITY COMPOSTING	351001-3001 ACTIVE
MARLBORO COUNTY MUNICIPAL SW LF COMPOSTING	351001-1101 INACTIVE

Mining Activities

<i>MINING COMPANY</i> <i>MINE NAME</i>	<i>PERMIT #</i> <i>MINERAL</i>
BAKER BROTHERS OF GRESHAM INC. GRESHAM	0959-31 SAND; SAND/CLAY
HANSON AGGREGATES SE, INC. BROWNSVILLE PLANT	0090-69 SAND/GRAVEL

Groundwater Quantity

Portions of this watershed fall within the Pee Dee Capacity Use Area and large groundwater uses must be reported (see Capacity Use Program p.22).

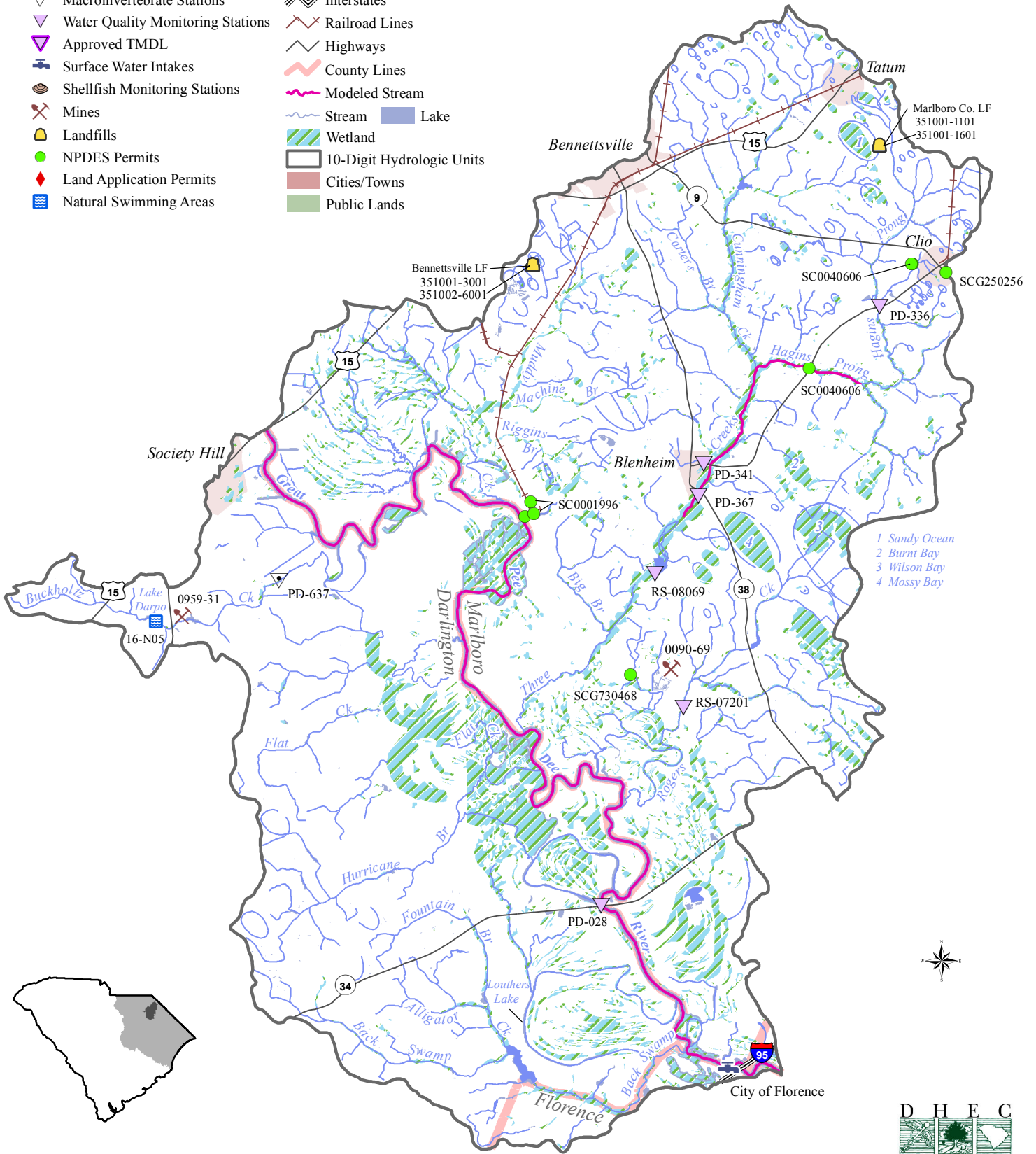
<i>WATER USER</i> <i>STREAM</i>	<i>REGULATED CAPACITY (MGD)</i> <i>PUMPING CAPACITY (MGD)</i>
CITY OF FLORENCE	10.0
GREAT PEE DEE RIVER	33.0

Growth Potential

There is a low to moderate potential for growth in this watershed, which contains the Towns of Cheraw, Clio, Tautm, and Blenheim, a portion of the City of Bennettsville and a portion of the Town of Society Hill, and is projected to have one of the largest population growth rates in the region. There are numerous industries in the watershed, most in and around the municipal limits of Cheraw. Commercial development is also centered around Cheraw, particularly west of town along S.C. Hwy 9, and additional growth is expected. A large portion of the watershed is not served by public water or sewer systems, primarily due to the large expanse of the floodplain associated with the Great Pee Dee River. These services are provided in and immediately around the Town of Cheraw, along S.C. Hwy 34 east of the City of Darlington, around Clio, and the areas near Bennettsville. The Town of Cheraw's plan to upgrade its wastewater treatment plant are currently underway and should encourage further growth. U.S. Hwy 15 and U.S. Hwy 401 form a bypass around the City of Bennettsville, and this bypass area is expected to see increased commercial growth. The proposed Preferred Alternative route of I-73 (Northern Corridor) would cross this watershed and could bring some growth to the area, especially around interchanges.

Great Pee Dee River Watershed (03040201-08)

- | | | | |
|--|-----------------------------------|--|---------------------------|
| | Macroinvertebrate Stations | | Interstates |
| | Water Quality Monitoring Stations | | Railroad Lines |
| | Approved TMDL | | Highways |
| | Surface Water Intakes | | County Lines |
| | Shellfish Monitoring Stations | | Modeled Stream |
| | Mines | | Stream |
| | Landfills | | Lake |
| | NPDES Permits | | Wetland |
| | Land Application Permits | | 10-Digit Hydrologic Units |
| | Natural Swimming Areas | | Cities/Towns |
| | | | Public Lands |



- 1 Sandy Ocean
- 2 Burnt Bay
- 3 Wilson Bay
- 4 Mossy Bay