

**03040203-14**  
*(Lumber River)*

**General Description**

The South Carolina portion of 03040203-14 is located in Dillon, Marion, and Horry Counties and consists primarily of the **Lumber River** and its tributaries from the South Carolina/North Carolina state line to its confluence with the Little Pee Dee River. The watershed occupies 37,495 acres of the Lower Coastal Plain and Coastal Zone regions of South Carolina. Land use/land cover in the watershed includes: 54.2% forested wetland, 25.2% agricultural land, 14.0% forested land, 4.1% urban land, 1.5% nonforested wetland, and 1.0% water.

The Lumber River originates in North Carolina and accepts drainage within South Carolina from the Ashpole Swamp Watershed, Jordan Creek (Feathery Bay, Granger Pond, Gapway Swamp, Hook Branch), and Boggy Branch (Pew Branch). Trippiloo Creek (Crooked Creek) originates in South Carolina and flows into North Carolina near Feathery Bay. There are a total of 101.4 stream miles and 70.5 acres of lake waters, all classified FW.

**Surface Water Quality**

<u>Station #</u>	<u>Type</u>	<u>Class</u>	<u>Description</u>
PD-038	INT	FW	LUMBER RIVER AT US 76 AT NICHOLS

**Lumber River (PD-038)** – Aquatic life uses are not supported due to dissolved oxygen excursions. In addition, there is a significant increasing trend in five-day biological oxygen demand. This is a blackwater system, characterized by naturally low pH conditions. There is a significant decreasing trend in pH. Although pH excursions occurred, they were typical of values seen in blackwater systems and were considered natural, not standards violations. A significant decreasing trend in total phosphorus suggests improving conditions for this parameter. Recreational uses are partially supported due to fecal coliform bacteria excursions.

*A fish consumption advisory has been issued by the Department for mercury and includes the **Lumber River** within this watershed (see advisory p.144).*

**NPDES Program**

**Active NPDES Facilities**

<i>RECEIVING STREAM FACILITY NAME</i>	<i>NPDES# TYPE</i>
LUMBER RIVER GSW&SA/TOWN OF NICHOLS WWTP	SC0041327 MINOR DOMESTIC

**Nonpoint Source Management Program**

**Mining Activities**

<i>MINING COMPANY MINE NAME</i>	<i>PERMIT # MINERAL</i>
HERRINGTON CONSTRUCTION CO., INC. HERRINGTON MINE #1	1185-67 SAND/CLAY

## **Water Quantity**

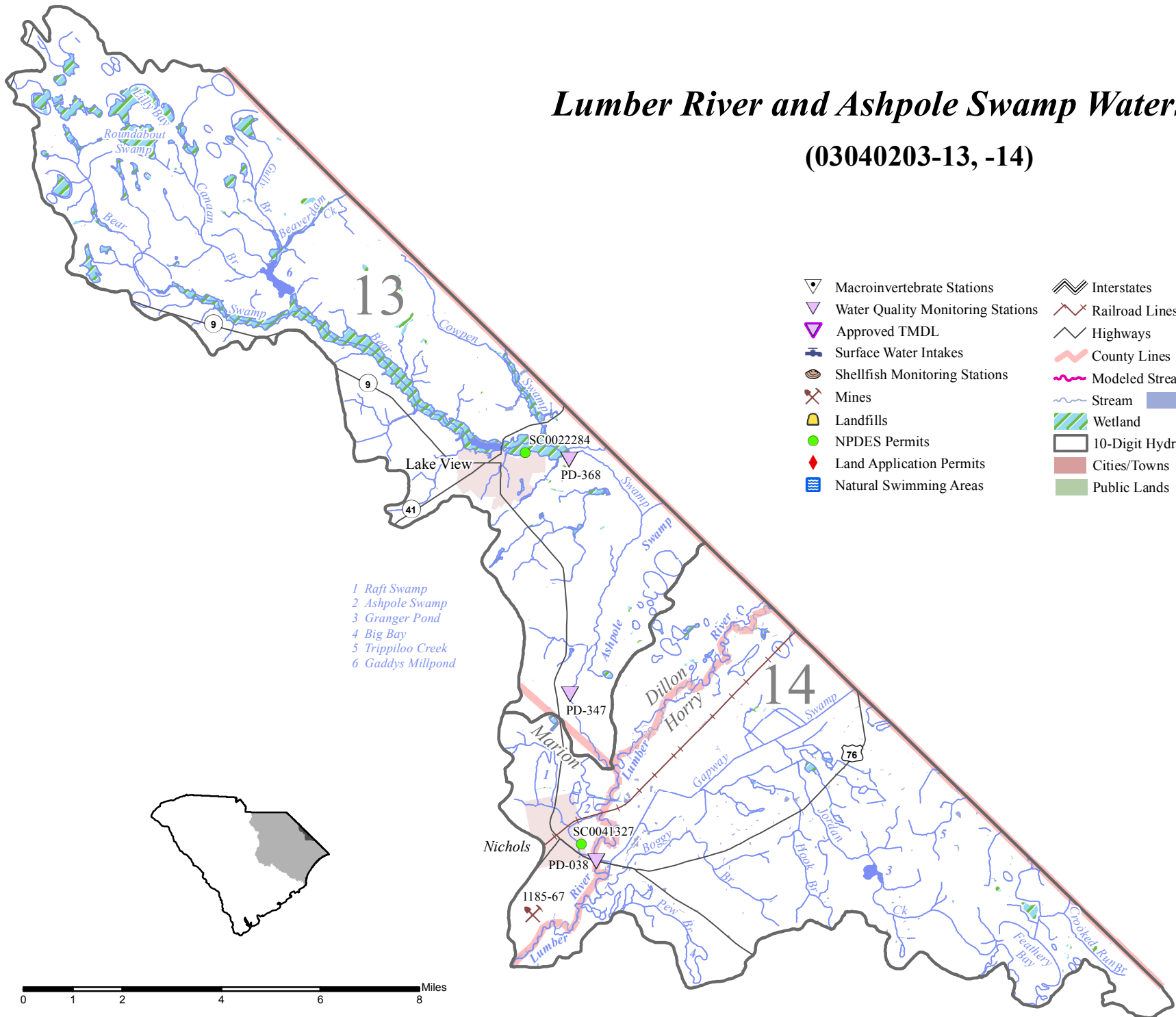
Portions of this watershed fall within the Pee Dee and Waccamaw Capacity Use Areas and large groundwater uses must be reported (see Capacity Use Program p.22).

## **Growth Potential**

There is a low potential for growth in this watershed, which contains the Town of Nichols. An extensive rural water system serves the majority of the watershed, but sewer services are limited to the Town of Nichols. U.S. Hwy 76 crosses the watershed (through the Town of Nichols), but it is a two-lane road with no plans for improvement. A railway line crosses the watershed, but there are no industrial areas located in this region.

# Lumber River and Ashpole Swamp Watersheds

(03040203-13, -14)



- 1 Raft Swamp
- 2 Ashpole Swamp
- 3 Granger Pond
- 4 Big Bay
- 5 Trippiloo Creek
- 6 Gaddys Millpond

- ▽ Macroinvertebrate Stations
- ▽ Water Quality Monitoring Stations
- ▽ Approved TMDL
- Surface Water Intakes
- Shellfish Monitoring Stations
- Mines
- Landfills
- NPDES Permits
- Land Application Permits
- Natural Swimming Areas
- Interstates
- Railroad Lines
- Highways
- County Lines
- Modeled Stream
- Stream
- Lake
- Wetland
- 10-Digit Hydrologic Units
- Cities/Towns
- Public Lands

