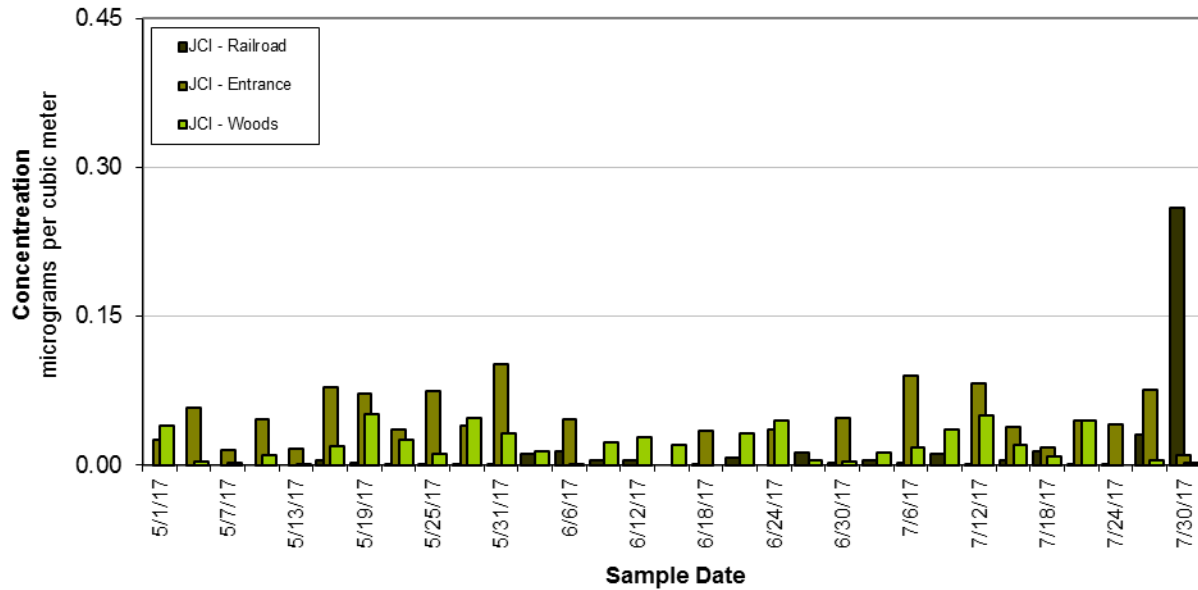
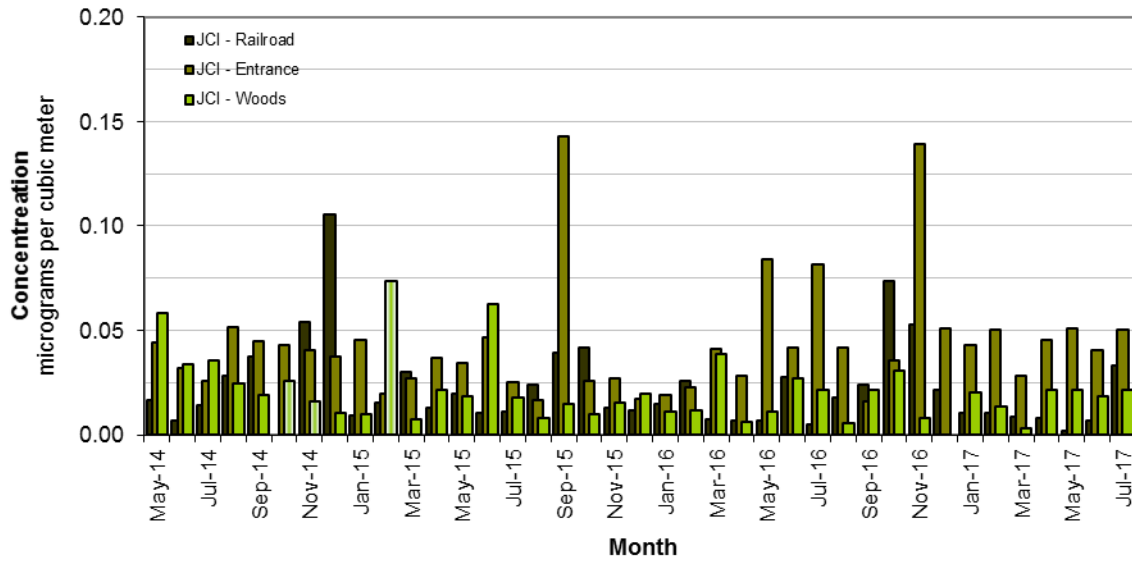


Johnson Control Florence Recycling Facility
24 Hour Average Lead concentration



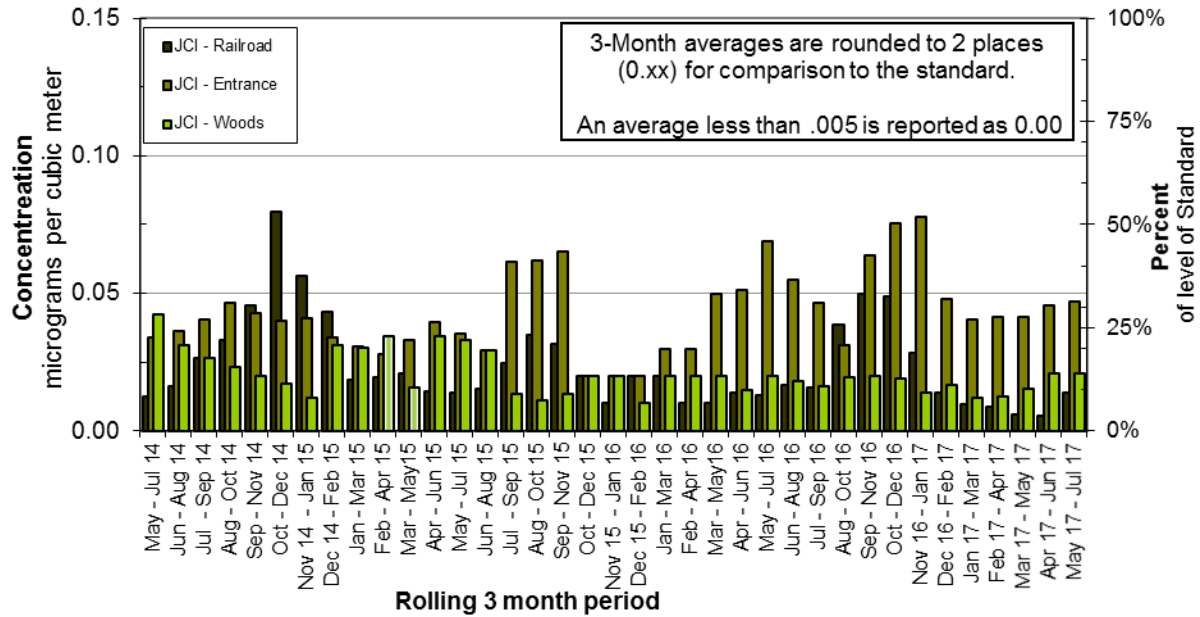
| Individual Daily Lead Data | | | |
|-----------------------------------|---|-----------------------|--------------------|
| <u>Sample Date</u> | <u>Concentration($\mu\text{g}/\text{M}^3$)</u> | | |
| | 041-8001-1 | 041-8002-1 | 041-8003-1 |
| | JCI - Railroad | JCI - Entrance | JCI - Woods |
| 5/1/17 | | 0.025 | 0.039 |
| 5/4/17 | | 0.057 | 0.003 |
| 5/7/17 | | 0.015 | 0.002 |
| 5/10/17 | | 0.046 | 0.010 |
| 5/13/17 | | 0.016 | 0.001 |
| 5/16/17 | 0.004 | 0.078 | 0.019 |
| 5/19/17 | 0.002 | 0.072 | 0.051 |
| 5/22/17 | 0.001 | 0.036 | 0.025 |
| 5/25/17 | 0.001 | 0.074 | 0.011 |
| 5/28/17 | 0.001 | 0.040 | 0.047 |
| 5/31/17 | 0.001 | 0.101 | 0.032 |
| 6/3/17 | 0.011 | | 0.013 |
| 6/6/17 | 0.014 | 0.046 | 0.001 |
| 6/9/17 | 0.004 | | 0.023 |
| 6/12/17 | 0.004 | | 0.028 |
| 6/15/17 | | | 0.020 |
| 6/18/17 | 0.001 | 0.034 | |
| 6/21/17 | 0.007 | | 0.032 |
| 6/24/17 | | 0.035 | 0.044 |
| 6/27/17 | 0.012 | | 0.004 |
| 6/30/17 | 0.002 | 0.047 | 0.003 |
| 7/3/17 | 0.004 | | 0.012 |
| 7/6/17 | 0.002 | 0.090 | 0.017 |
| 7/9/17 | 0.011 | | 0.035 |
| 7/12/17 | 0.001 | 0.082 | 0.050 |
| 7/15/17 | 0.005 | 0.038 | 0.020 |
| 7/18/17 | 0.014 | 0.018 | 0.008 |
| 7/21/17 | 0.001 | 0.045 | 0.045 |
| 7/24/17 | 0.001 | 0.041 | |
| 7/27/17 | 0.031 | 0.076 | 0.005 |
| 7/30/17 | 0.259 | 0.010 | 0.002 |

Johnson Control Florence Recycling Facility
Monthly Average Lead concentration



| | Monthly Average Lead Data | | |
|--------|----------------------------------|-----------------------|--------------------|
| | Conc.(µg/M³) | | |
| | 041-8001-1 | 041-8002-1 | 041-8003-1 |
| | JCI - Railroad | JCI - Entrance | JCI - Woods |
| May-14 | 0.017 | 0.044 | 0.058 |
| Jun-14 | 0.007 | 0.032 | 0.034 |
| Jul-14 | 0.014 | 0.026 | 0.036 |
| Aug-14 | 0.028 | 0.052 | 0.024 |
| Sep-14 | 0.038 | 0.045 | 0.019 |
| Oct-14 | | 0.043 | 0.026 |
| Nov-14 | 0.054 | 0.040 | 0.016 |
| Dec-14 | 0.106 | 0.037 | 0.011 |
| Jan-15 | 0.009 | 0.045 | 0.010 |
| Feb-15 | 0.016 | 0.020 | 0.074 |
| Mar-15 | 0.030 | 0.027 | 0.008 |
| Apr-15 | 0.013 | 0.037 | 0.022 |
| May-15 | 0.020 | 0.034 | 0.018 |
| Jun-15 | 0.010 | 0.047 | 0.063 |
| Jul-15 | 0.011 | 0.025 | 0.018 |
| Aug-15 | 0.024 | 0.017 | 0.008 |
| Sep-15 | 0.040 | 0.143 | 0.015 |
| Oct-15 | 0.042 | 0.026 | 0.010 |
| Nov-15 | 0.013 | 0.027 | 0.015 |
| Dec-15 | 0.012 | 0.017 | 0.020 |
| Jan-16 | 0.015 | 0.019 | 0.011 |
| Feb-16 | 0.026 | 0.023 | 0.012 |
| Mar-16 | 0.008 | 0.041 | 0.038 |
| Apr-16 | 0.007 | 0.028 | 0.006 |
| May-16 | 0.007 | 0.084 | 0.011 |
| Jun-16 | 0.028 | 0.042 | 0.027 |
| Jul-16 | 0.005 | 0.081 | 0.021 |
| Aug-16 | 0.018 | 0.042 | 0.006 |
| Sep-16 | 0.024 | 0.016 | 0.022 |
| Oct-16 | 0.073 | 0.036 | 0.031 |
| Nov-16 | 0.053 | 0.139 | 0.008 |
| Dec-16 | 0.021 | 0.051 | |
| Jan-17 | 0.011 | 0.043 | 0.020 |
| Feb-17 | 0.010 | 0.050 | 0.014 |
| Mar-17 | 0.009 | 0.029 | 0.003 |
| Apr-17 | 0.008 | 0.045 | 0.022 |
| May-17 | 0.002 | 0.051 | 0.022 |
| Jun-17 | 0.007 | 0.041 | 0.019 |
| Jul-17 | 0.033 | 0.050 | 0.022 |

Johnson Control Florence Recycling Facility
Three Month Average Lead concentration



| Three Month Average Lead Data | | | |
|--------------------------------------|--------------------------------|-----------------------|--------------------|
| | Conc.(µg/M³) | | |
| | 041-8001-1 | 041-8002-1 | 041-8003-1 |
| | JCI - Railroad | JCI - Entrance | JCI - Woods |
| May - Jul 14 | 0.01 | 0.03 | 0.04 |
| Jun - Aug 14 | 0.02 | 0.04 | 0.03 |
| Jul - Sep 14 | 0.03 | 0.04 | 0.03 |
| Aug - Oct 14 | 0.03 | 0.05 | 0.02 |
| Sep - Nov 14 | 0.05 | 0.04 | 0.02 |
| Oct - Dec 14 | 0.08 | 0.04 | 0.02 |
| Nov 14 - Jan 15 | 0.06 | 0.04 | 0.01 |
| Dec 14 - Feb 15 | 0.04 | 0.03 | 0.03 |
| Jan - Mar 15 | 0.02 | 0.03 | 0.03 |
| Feb - Apr 15 | 0.02 | 0.03 | 0.03 |
| Mar - May 15 | 0.02 | 0.03 | 0.02 |
| Apr - Jun 15 | 0.01 | 0.04 | 0.03 |
| May - Jul 15 | 0.01 | 0.04 | 0.03 |
| Jun - Aug 15 | 0.02 | 0.03 | 0.03 |
| Jul - Sep 15 | 0.02 | 0.06 | 0.01 |
| Aug - Oct 15 | 0.04 | 0.06 | 0.01 |
| Sep - Nov 15 | 0.03 | 0.07 | 0.01 |
| Oct - Dec 15 | 0.02 | 0.02 | 0.02 |
| Nov 15 - Jan 16 | 0.01 | 0.02 | 0.02 |
| Dec 15 - Feb 16 | 0.02 | 0.02 | 0.01 |
| Jan - Mar 16 | 0.02 | 0.03 | 0.02 |
| Feb - Apr 16 | 0.01 | 0.03 | 0.02 |
| Mar - May 16 | 0.01 | 0.05 | 0.02 |
| Apr - Jun 16 | 0.01 | 0.05 | 0.01 |
| May - Jul 16 | 0.01 | 0.07 | 0.02 |
| Jun - Aug 16 | 0.02 | 0.05 | 0.02 |
| Jul - Sep 16 | 0.02 | 0.05 | 0.02 |
| Aug - Oct 16 | 0.04 | 0.03 | 0.02 |
| Sep - Nov 16 | 0.05 | 0.06 | 0.02 |
| Oct - Dec 16 | 0.05 | 0.08 | 0.02 |
| Nov 16 - Jan 17 | 0.03 | 0.08 | 0.01 |
| Dec 16 - Feb 17 | 0.01 | 0.05 | 0.02 |
| Jan 17 - Mar 17 | 0.01 | 0.04 | 0.01 |
| Feb 17 - Apr 17 | 0.01 | 0.04 | 0.01 |
| Mar 17 - May 17 | 0.01 | 0.04 | 0.02 |
| Apr 17 - Jun 17 | 0.01 | 0.05 | 0.02 |
| May 17 - Jul 17 | 0.01 | 0.05 | 0.02 |