



2600 Bull Street
Columbia, SC 29201-1708

Bureau of Environmental Services
Division of Air Quality Analysis
8231 Parklane Road
Columbia, South Carolina 29223
(803) 896-0902 FAX (803) 896-0980

May 25, 2005

Mr. Doug Neeley
Air and Radiation Technology Branch
US EPA Region IV
61 Forsyth Street SW
Atlanta, GA 30303

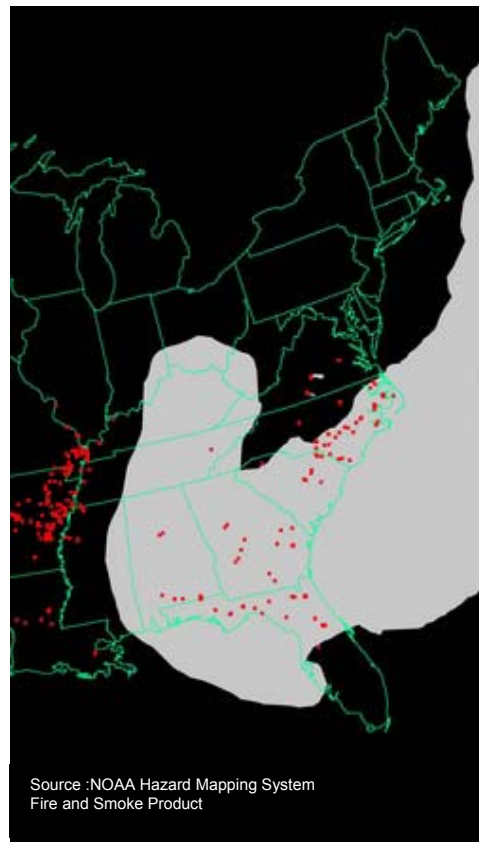
Re: CY 2003 Flagged particulate monitoring data

Dear Mr. Neeley:

During the period of June 23 – June 28, 2003 many of the ambient monitoring sites in South Carolina were impacted by smoke from wildfires across the southeast and Canada. The smoke from the fires was visible in all or part of South Carolina during this period. An extended period of relatively stagnant air contributed to the concentrations and accumulation of smoke from fires in Florida, Georgia and the coastal Carolinas. We have applied exceptional event flags to the to the PM_{2.5} and PM₁₀ data in AQS that was most obviously impacted by the smoke.

The impact of the smoke was most apparent in the widespread elevated concentrations of PM_{2.5}. Although less obvious than the fine fraction, it was felt it is appropriate to flag the concurrent PM₁₀ data due to the significant proportion of fine mass contained in the larger fraction.

I have included a disk containing satellite imagery, back trajectories and NOAA wildfire products related to the period that data has been flagged. The specific sites and dates flagged are listed in the attached table and in the accompanying documentation.



We believe the data flagging is consistent with criteria described in Guideline for the Identification and Use of Air Quality Data Affected by Exceptional Events (EPA-450/4-86-007) and request that the concurring flag be applied.

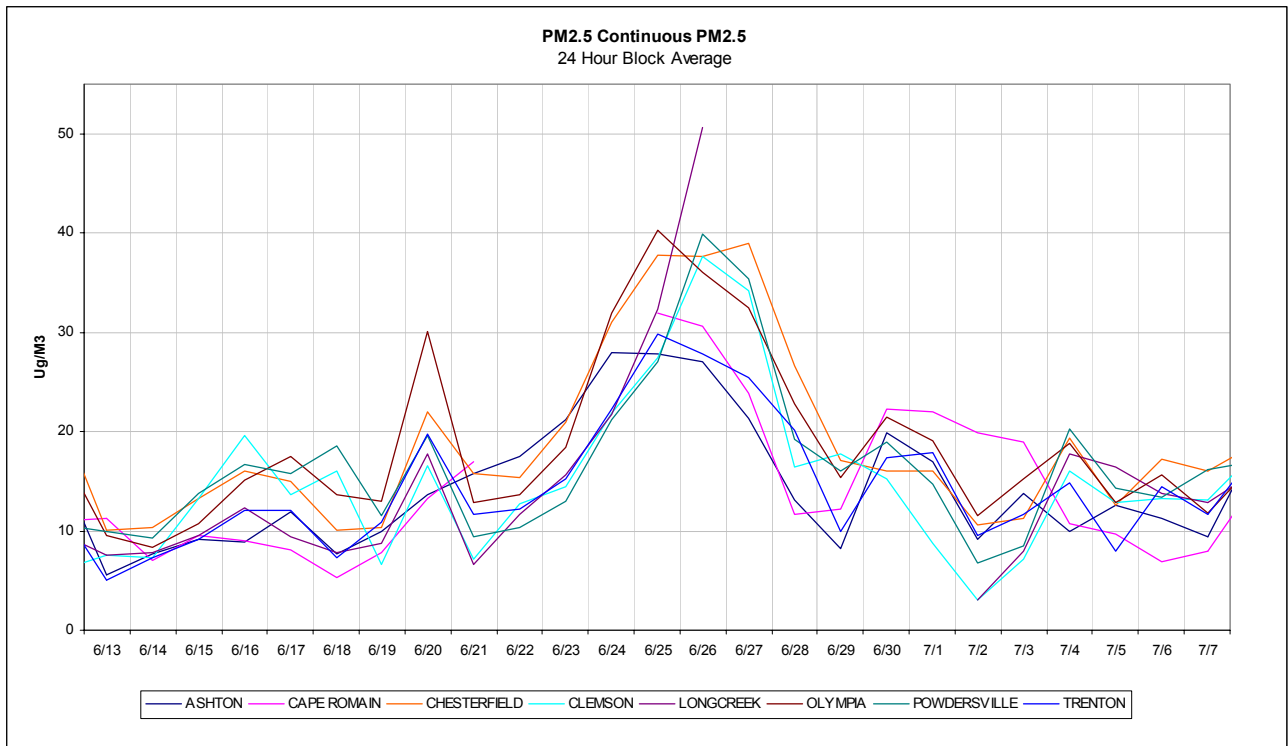
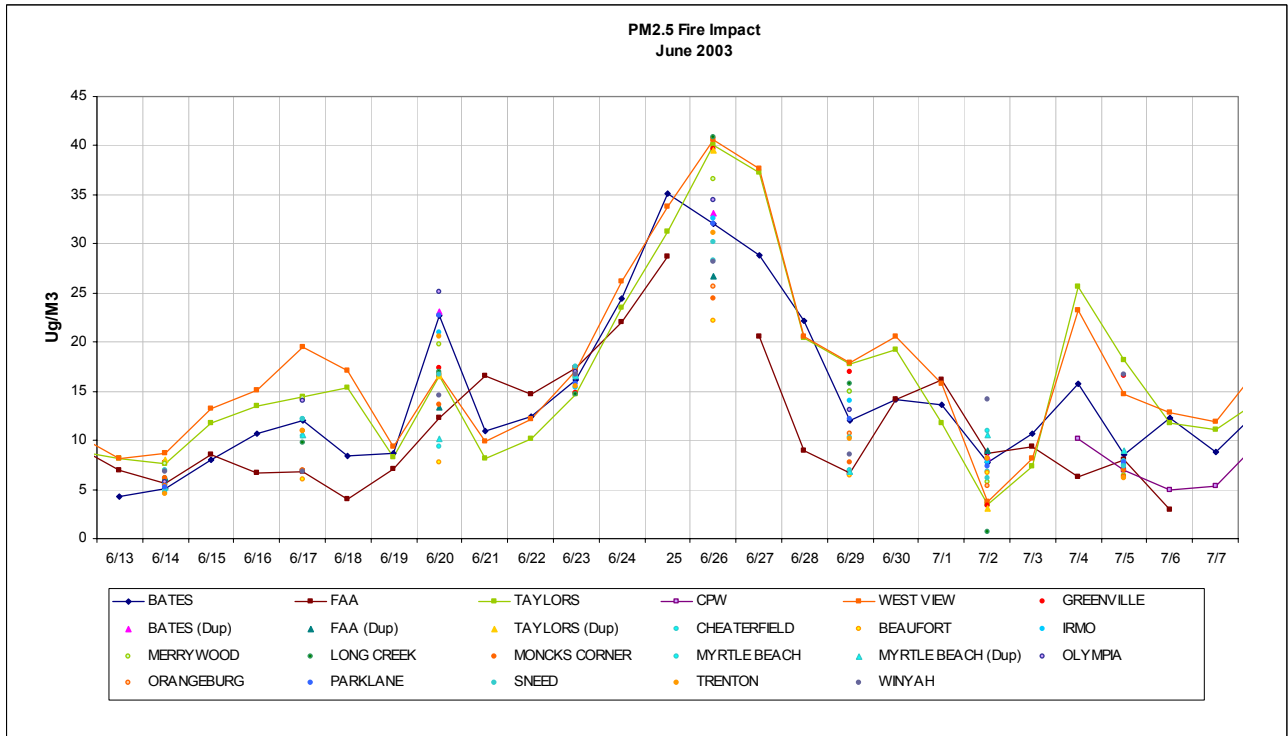
If additional supporting information is needed to support your concurrence with these data flags, please contact me at (803) 896-0902.

Sincerely yours,

Scott A. Reynolds, Director
Division of Air Quality Analysis

cc: Allison Humphries, APTMD
USEPA - Region 4
Renee Shealy, BAQ
SC DHEC (no disk)

	Site Name	06/23/03	06/24/03	06/25/03	06/26/03	06/27/03	06/28/03
PM_{2.5} FRM							
	All Sites						
PM_{2.5} Continuous							
45-007-0003-3	POWDERSVILLE Cont		*			*	
045-019-0046	CAPE ROMAIN NWR		*			*	
45-025-0001-1	CHESTERFIELD		*				*
45-029-0002-	ASHTON		*		*		
45-037-0001-	TRENTON					*	
45-073-0001-	LONGCREEK			*		*	
45-077-0002-3	CLEMSON			*		*	
045-079-0018	OLYMPIA		*			*	
PM₁₀							
	All Sites						
PM₁₀ Continuous							
45-019-0003-	JENKINS AVENUE						
45-43-0006-	GEORGETOWN			*	*		
45-45-1002-	PARKER		*			*	
45-063-0009-1	CAYCE		*		*		
45-079-0018-1	OLYMPIA		*			*	
45-079-1003-1	DHEC						
PM₂₅ SPECIATION							
45-019-0049-5	CPW Spec						
45-025-0001-5	CHESTERFIELD Spec						
45-045-0009-5	TAYLORS Spec						
45-079-0019--5	BATES HOUSE Spec						
Continuous PM_{2.5} SPECIATION*	*Sulfate , Nitrate, Total Carbon , Organic Carbon, LAC						
045-019-0046	CAPE ROMAIN NWR		*			*	



**PM10
June 2003 Smoke Event**

