

This is an official
DHEC Health Alert

Distributed via Health Alert Network
1 May 2009, 10:30 AM EST

CDC Guidance: Algorithms to Assist in Decisions on Testing and Treatment for H1N1 Influenza -- United States, 2009

These algorithms are intended to help state and local public health authorities provide guidance to clinicians for testing and treatment of persons with symptoms that might represent H1N1 (swine influenza) virus. Two options are provided to allow greater flexibility as the outbreak evolves. Some states may not have detected their first case or have very few cases and might want to be more aggressive about identifying new cases, while other states may have many cases and need to reserve resources.

Two prototype algorithms are included, one for areas with few (less than five) or no confirmed cases of H1N1 (swine influenza) virus infection, and one for areas with five or more confirmed cases. CDC does not plan to post these algorithms as national guidance since they are intended as a state or local guide only. State and local authorities are encouraged to adapt these algorithms to local needs, taking into account current information about H1N1 (swine influenza) virus infections in the local area, changes in local area epidemiology, antiviral medication availability, and public and health-care provider concerns.

Please note: These algorithms do not apply to providers participating in the U.S. Outpatient Influenza-like Illness Surveillance Network (ILINet).

Guidance Regarding Treatment

Excellent guidance can be obtained from the CDC website at:
www.cdc.gov/swineflu/recommendations.htm

Addendum:

The swine influenza A (H1N1) outbreak is rapidly evolving. Therefore, it can be expected that these and other guidelines related to swine flu will be regularly updated.

DHEC Contact Information for Reportable Diseases and Reporting Requirements

Reporting of outbreaks/clusters of cases is consistent with South Carolina Law requiring the reporting of diseases and conditions to your state or local public health department. (State Law # 44-29-10 and Regulation # 61-20) as per the DHEC 2009 List of Reportable Conditions available at:
http://www.scdhec.gov/health/disease/docs/reportable_conditions.pdf

Federal HIPAA legislation allows disclosure of protected health information, without consent of the individual, to public health authorities to collect and receive such information for the purpose of preventing or controlling disease. (HIPAA 45 CFR §164.512).

Regional Public Health Offices – 2009

Mail or call reports to the Epidemiology Office in each Public Health Region.

Region 1

Anderson, Oconee
220 McGee Road
Anderson, SC 29625
Phone: (864) 260-4358
Fax: (864) 260-5623
Nights / Weekends: 1-866-298-4442

Abbeville, Edgefield, Greenwood, Laurens, McCormick, Saluda

1736 S. Main Street
Greenwood, SC 29646
Phone: 1-888-218-5475
Fax: (864) 942-3690
Nights / Weekends: 1-800-420-1915

Region 2

Greenville, Pickens
PO Box 2507
200 University Ridge
Greenville, SC 29602-2507
Phone: (864) 282-4139
Fax: (864) 282-4373
Nights / Weekends: 1-800-993-1186

Cherokee, Spartanburg, Union

PO Box 4217
151 E. Wood Street
Spartanburg, SC 29305-4217
Phone: (864) 596-2227, x- 210
Fax: (864) 596-3443
Nights / Weekends: 1-800-993-1186

Region 3

Chester, Lancaster, York
PO Box 817
1833 Pageland Highway
Lancaster, SC 29720
Phone: (803) 286-9948
Fax: (803) 286-5418
Nights / Weekends: 1-866-867-3886

Region 3 (continued)

Fairfield, Lexington, Newberry, Richland
2000 Hampton Street
Columbia, SC 29204
Phone: (803) 576-2749
Fax: (803) 576-2993
Nights / Weekends: 1-888-554-9915

Region 4

Clarendon, Kershaw, Lee, Sumter
PO Box 1628
105 North Magnolia Street
Sumter, SC 29150
Phone: (803) 773-5511
Fax: (803) 775-9941
Nights/Weekends: 1-877-831-4647

Chesterfield, Darlington, Dillon, Florence, Marlboro, Marion

145 E. Cheves Street
Florence, SC 29506
Phone: (843) 661-4830
Fax: (843) 661-4859
Nights / Weekends: (843) 660-8145

Region 5

Bamberg, Calhoun, Orangeburg
PO Box 1126
1550 Carolina Avenue
Orangeburg, SC 29116
Phone: (803) 533-7199
Fax: (803) 533-7134
Nights / Weekends: (803) 954-8513

Aiken, Allendale, Barnwell

1680 Richland Avenue, W. Suite 40
Aiken, SC 29801
Phone: (803) 642-1618
Fax: (803) 643-8386
Nights / Weekends: (803) 827-8668 or
1-800-614-1519

Region 6

Georgetown, Horry, Williamsburg
1931 Industrial Park Road
Conway, SC 29526-5482
Phone: (843) 915-8804
Fax: (843) 365-0085
Nights / Weekends: (843) 381-6710

Region 7

Berkeley, Charleston, Dorchester

4050 Bridge View Drive, Suite 600
N. Charleston, SC 29405
Phone: (843) 953-0060
Fax: (843) 953-0051
Nights / Weekends: (843) 219-8470

Region 8

Beaufort, Colleton, Hampton, Jasper

219 S. Lemacks Street
Walterboro, SC 29488
Phone: (843) 525-7603 , x-108
Fax: (843) 549-6845
Nights / Weekends: 1-800-614-4698

DHEC Bureau of Disease Control

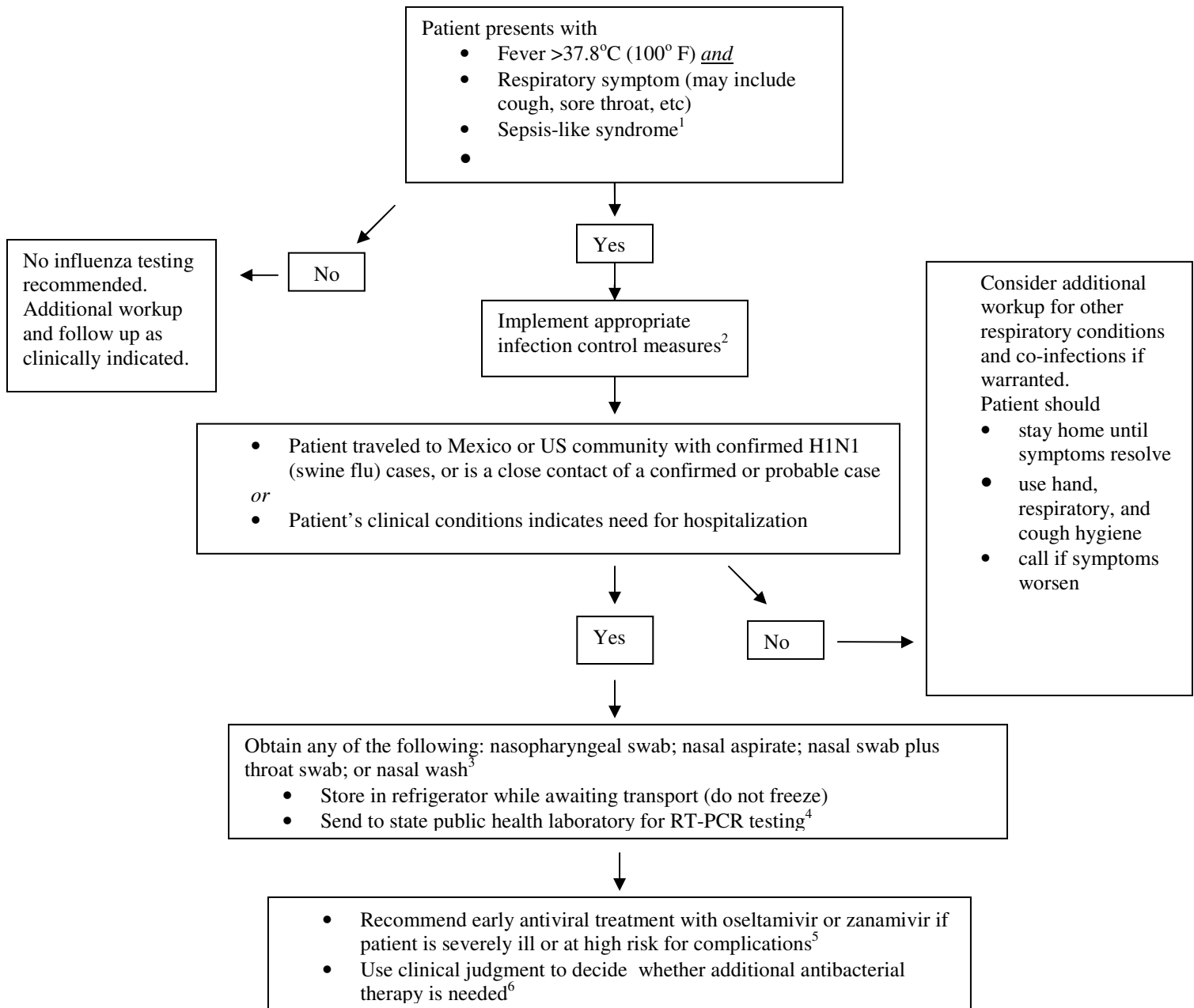
Division of Acute Disease Epidemiology

1751 Calhoun Street
Box 101106
Columbia, SC 29211
Phone: (803) 898-0861
Fax: (803) 898-0897
Nights / Weekends: 1-888-847-0902



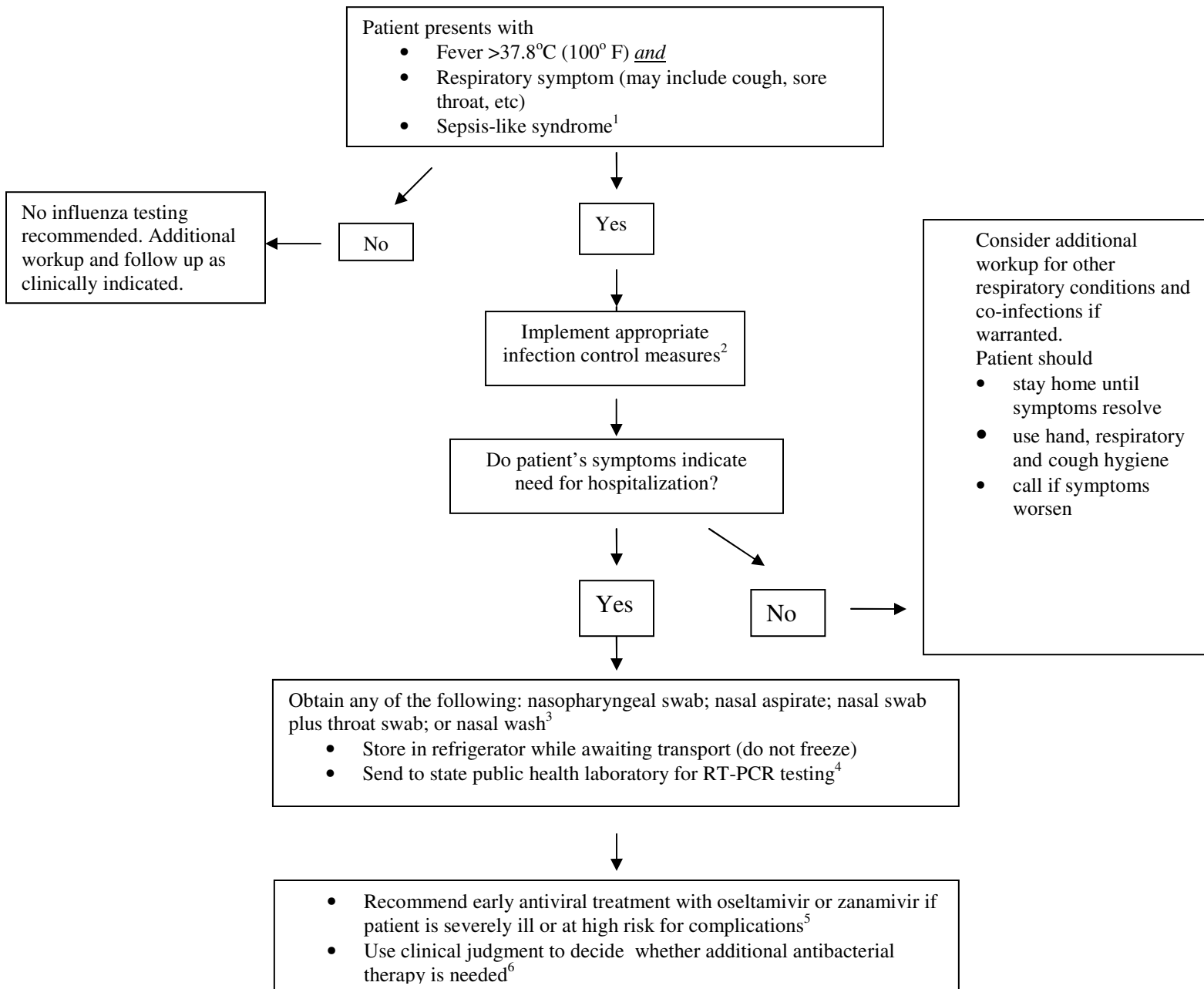
www.scdhec.gov

**Algorithm to assist in decisions on testing and treatment for H1N1 (swine flu) Virus
in Regions (state or metropolitan area) with Fewer than 5 confirmed Cases**



1. As with seasonal influenza, infants, adults ≥ 65 years-old and persons with compromised immune systems may have atypical presentations.
 2. Information on infection control can be found at: http://www.cdc.gov/swineflu/guidelines_infection_control.htm
 3. Nasal washes require appropriate personal protective equipment. See: http://www.cdc.gov/swineflu/guidelines_infection_control.htm⁴³.
 Real-time polymerase chain reaction (RT-PCR) is the preferred laboratory test for identifying H1N1 (swine flu) virus. Rapid antigen tests and immunofluorescence tests have unknown sensitivity and specificity to detect H1N1 (swine flu) virus. For more information, please see <http://www.cdc.gov/swineflu/specimencollection.htm>.
 5. Interim guidance for antiviral use can be found at: <http://www.cdc.gov/swineflu/recommendations.htm>
 6. Interim guidance for clinicians is available at: <http://www.cdc.gov/swineflu/identifyingpatients.htm>
Please note: these algorithms do *not* apply to providers participating in the US Outpatient Influenza-like Illness Surveillance Network (ILINet). For guidance related to ILI Net see: <http://www.cdc.gov/h1n1flu/screening.htm>

**Algorithm to assist in decisions on testing and treatment for H1N1 (swine flu) Virus
in Regions (state or metropolitan area) with 5 or more Confirmed Cases**



1. As with seasonal influenza, infants, adults ≥ 65 years-old, and persons with compromised immune systems may have atypical presentations.
 2. Information on infection control can be found at: http://www.cdc.gov/swineflu/guidelines_infection_control.htm
 3. Nasal washes require appropriate personal protective equipment. See: http://www.cdc.gov/swineflu/guidelines_infection_control.htm
 4. Real-time polymerase chain reaction (RT-PCR) is the preferred laboratory test for identifying S-OIV. Rapid antigen tests and immunofluorescence tests have unknown sensitivity and specificity to detect S-OIV H1N1. For more information, please see <http://www.cdc.gov/swineflu/specimencollection.htm>.
 5. Information on use of antiviral agents can be found at: <http://www.cdc.gov/swineflu/recommendations.htm>
 6. Interim guidance for clinicians is available at: <http://www.cdc.gov/swineflu/identifyingpatients.htm>