



# **The South Carolina Department of Health and Environmental Control**

**Noreen O'Donnell**  
**STD/HIV Division**

# HOPWA

- HUD funded program started in 1992.
- The program provides funding for housing and housing-related services for PLWHA and their families.
- SC DHEC receives approximately \$1.5 million each year.



# HOPWA Funding



- Formula Funding
- State of South Carolina receives a direct allocation.
- Columbia and Charleston EMSAs receive direct allocations. York County included in Charlotte MSA; Aiken and Edgefield Counties included in Augusta MSA.

# HOPWA Funding

- The funds received by the state of South Carolina are distributed to 14 project sponsors throughout the state.
- Most of the sponsors are Ryan White HIV care providers.

# HOPWA Activities

- Funds are designed to provide emergency or long term housing assistance for persons with HIV disease who are at risk of becoming homeless.
- HOPWA supportive services are designed to enable clients to establish and/or maintain stable housing.

# HOPWA Activities

- Short-term rent, mortgage and utility payments (STRMU)
- Supportive services
- Tenant-based rental assistance
- Supportive housing

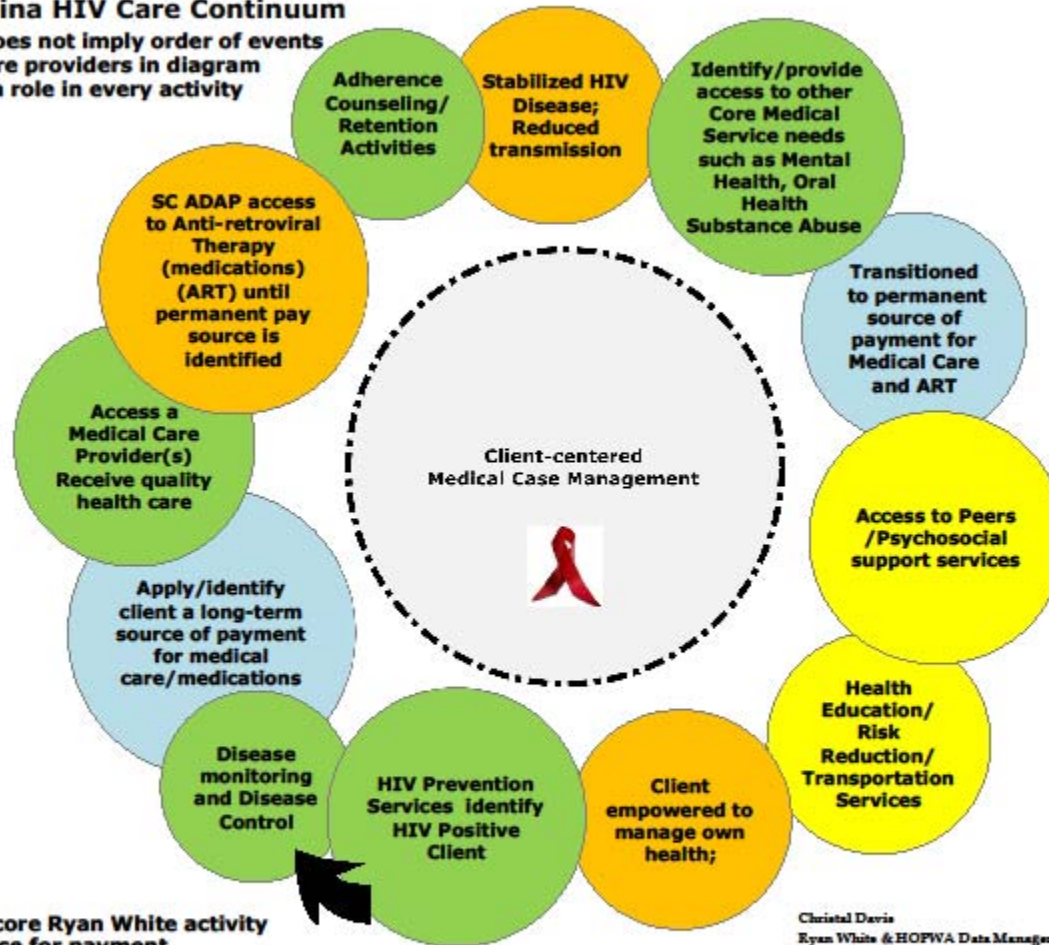


# Current HOPWA Long-Term Housing Activities

- Fort Mill Housing Services - Tenant-Based Rental Assistance Statewide Program
- AID Upstate – Supportive Housing Unit in Greenville
- Project Care – Transitional Housing Unit in Greenville

**South Carolina HIV Care Continuum**

\* Diagram does not imply order of events  
\* All care providers in diagram have a role in every activity



Yellow = Non-core Ryan White activity  
Blue = Resource for payment  
Green= Active engagement  
Orange= Prevention Goal

Christal Davis  
Ryan White & HOPWA Data Manager  
SC DEHC, STD/HIV Division  
August 2009

# HOPWA Case Management

- Designed to help people establish and maintain stable housing.

# Recent Changes

- HOPWA Case Management standards have been aligned with Ryan White Part B CM standards – mid year review, annual reassessment, action plan update every six months.

# Documentation Changes

- Currently revising the intake process to ensure all data needed for HOPWA reporting is being collected and entered into PE.



# Contact Information

Noreen O'Donnell, Program Manager

Ryan White/HOPWA

STD/HIV Division

SC Dept. of Health and Environmental Control

Mills/Jarrett Complex

Box 101106

Columbia, SC 29211

Phone : 803-898-0198

Fax: 803-898-3100

E-mail: [odonnett@dhec.sc.gov](mailto:odonnett@dhec.sc.gov)