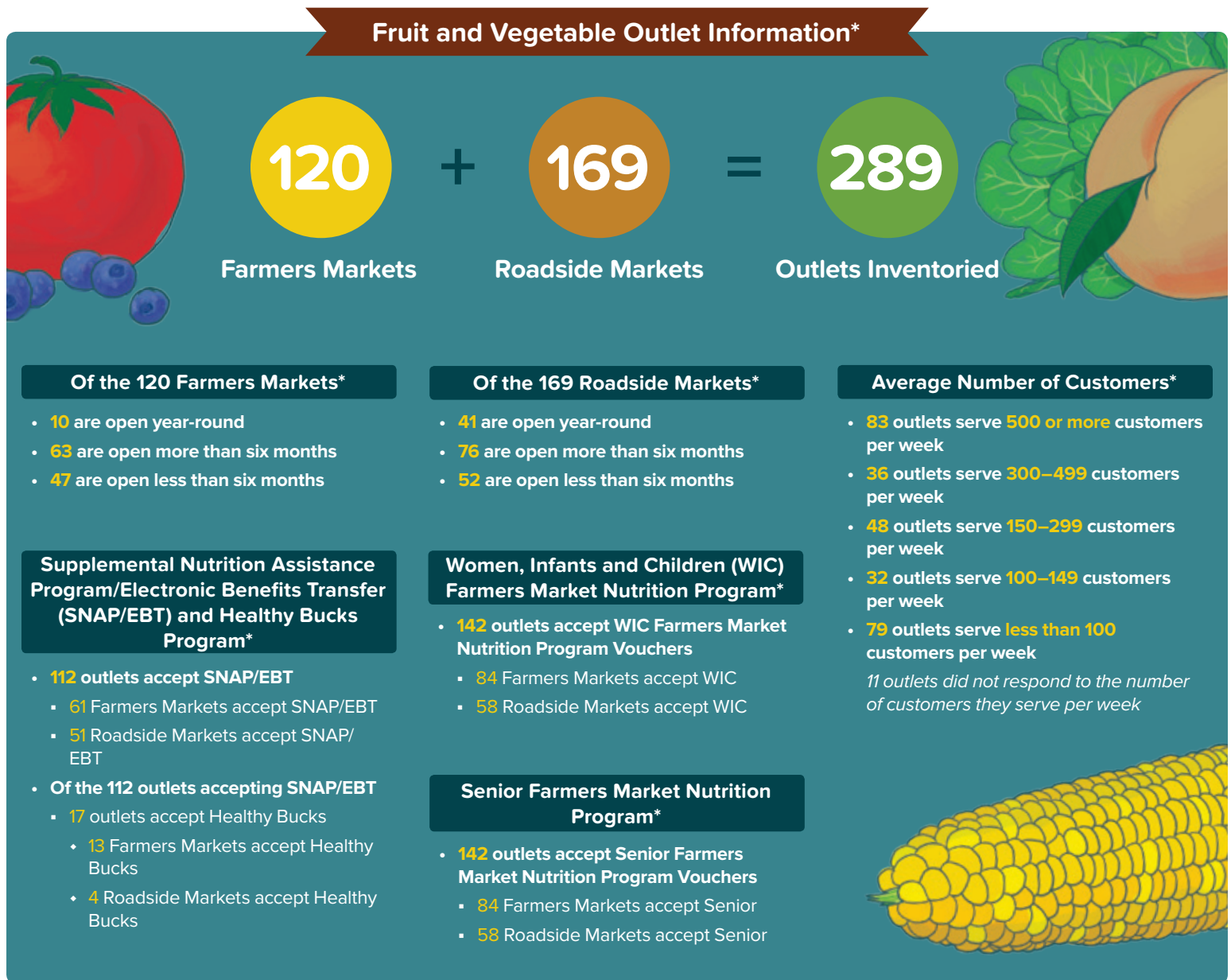


2016 SOUTH CAROLINA FRUIT AND VEGETABLE OUTLET INVENTORY OVERVIEW

The South Carolina Fruit and Vegetable Outlet Inventory identifies farmers markets and roadside markets with predictable locations and hours where fruits and vegetables are sold. The South Carolina Department of Health and Environmental Control's (DHEC) regional community health staff conducted the Fruit and Vegetable Outlet Inventory at the local level. In 2015, the first year of the inventory, 229 outlets were inventoried by staff. The number increased to 289 farmers markets and roadside markets in 2016.

The outlets inventoried have been mapped to promote those locations where community members can purchase fresh fruits and vegetables (<https://gis.dhec.sc.gov/farmersMarkets>). The information obtained from the 2016 inventory will help partners from DHEC, the South Carolina Department of Agriculture, the South Carolina Department of Social Services and the South Carolina Association of Farmers Markets identify areas in the state with minimal access to fresh fruits and vegetables. Partners will use this information to focus their efforts on improving access to healthy foods in those areas.



*Data based on the 2016 SC Fruit and Vegetable Outlet Inventory. Visit <https://gis.dhec.sc.gov/farmersMarkets> for additional information.