



# Flu Watch

MMWR Week 25  
June 17-June 23, 2012

Summer Edition

South Carolina Department of Health and Environmental Control  
Division of Acute Disease Epidemiology

*Summary.....1*

*ILINet.....2*

*Positive Confirmatory Tests.....3*

*Positive rapid tests.....4*

*Hospitalizations and deaths....4*

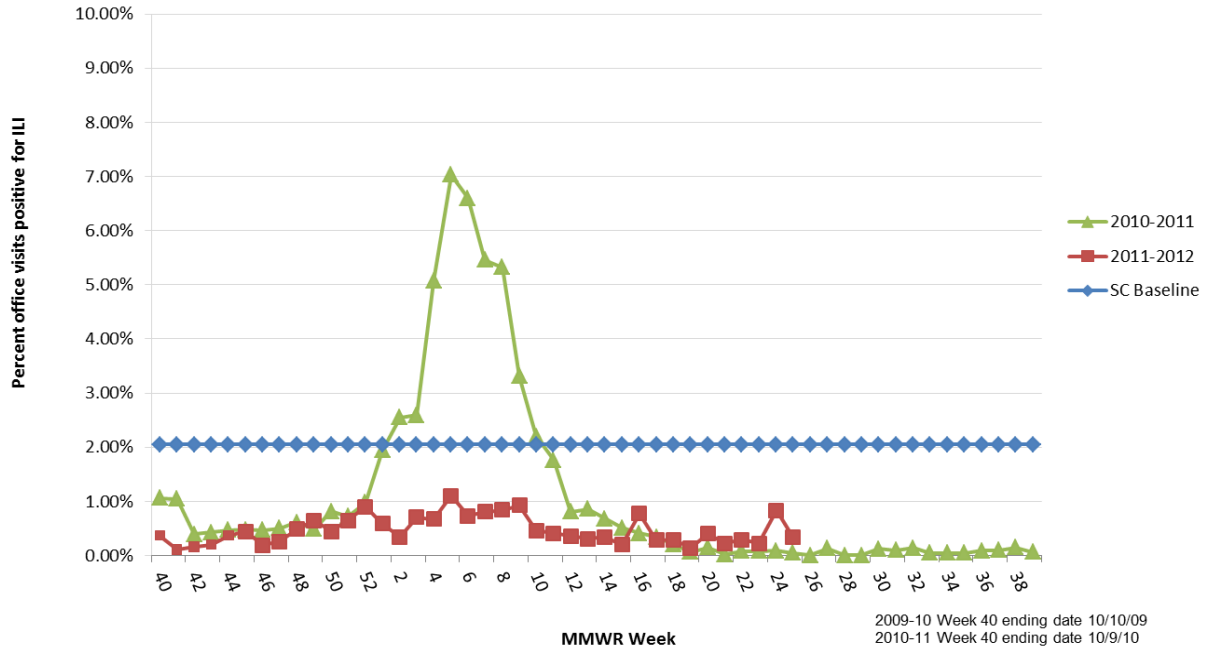
**Current influenza activity level: SPORADIC**

All data are provisional and may change as new reports are received.

**ILI Activity, Positive Confirmatory Tests, Influenza Associated Hospitalizations and Deaths, and Positive Rapid Tests**

	<i>Previous week</i>	<i>Current week</i>	▲	Cumulative (10/2/11-6/23/12)
Visits for ILI to ILINet providers (%)	.83	.33	▼ .50	NA
Positive confirmatory tests	1	3	▲ 2	136
Lab confirmed flu hospitalizations	2	4	▲ 2	113
Lab confirmed flu deaths	0	0	0	1
Positive rapid tests	3	6	▲ 3	2546

**Percentage of Visits for Influenza-like Illness (ILI) Reported by Sentinel Providers in South Carolina  
2010-2011 and 2011-2012 Influenza Seasons**



**ILI Percentage by Geographic Region**

Geographic Region	ILI %	# of Reporters
Upstate-Regions 1 -2	0	4
Midlands-Regions 3-5	.25	6
Coastal-Regions 6-8	1.39	1



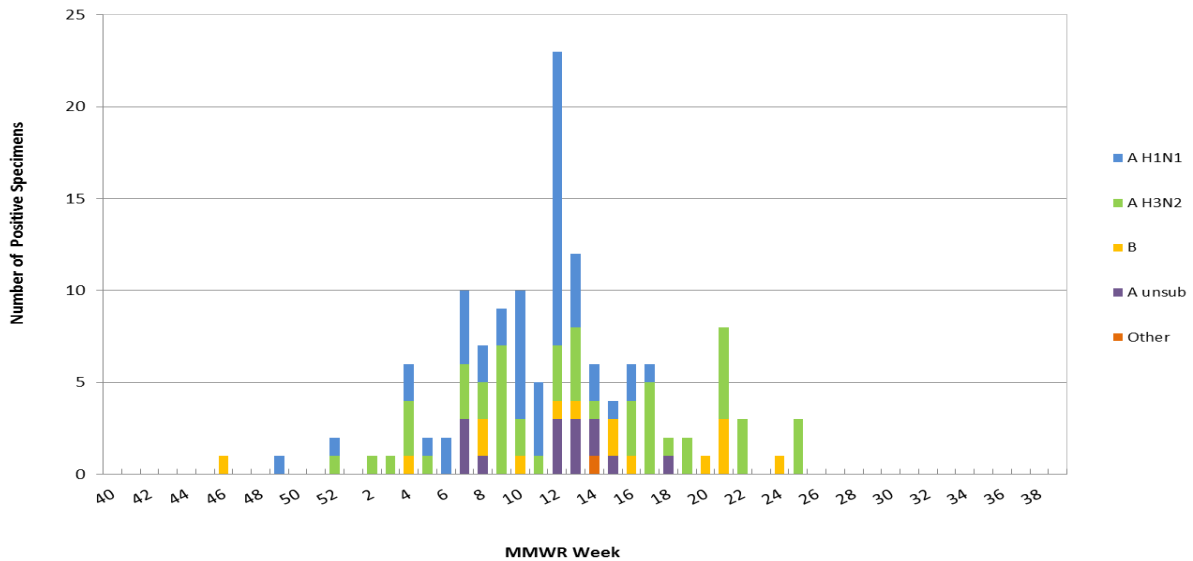
**Positive confirmatory influenza test results\*  
Cumulative (10/2/11 – 6/23/12)**

	BOL	Other clinical labs
Number of specimens tested	183	NA
Number of positive tests	98	38
Influenza A unsubtype		16
Influenza A H1N1	38	11
Influenza A H3N2	47	7
Influenza B	13	2
Other **		2

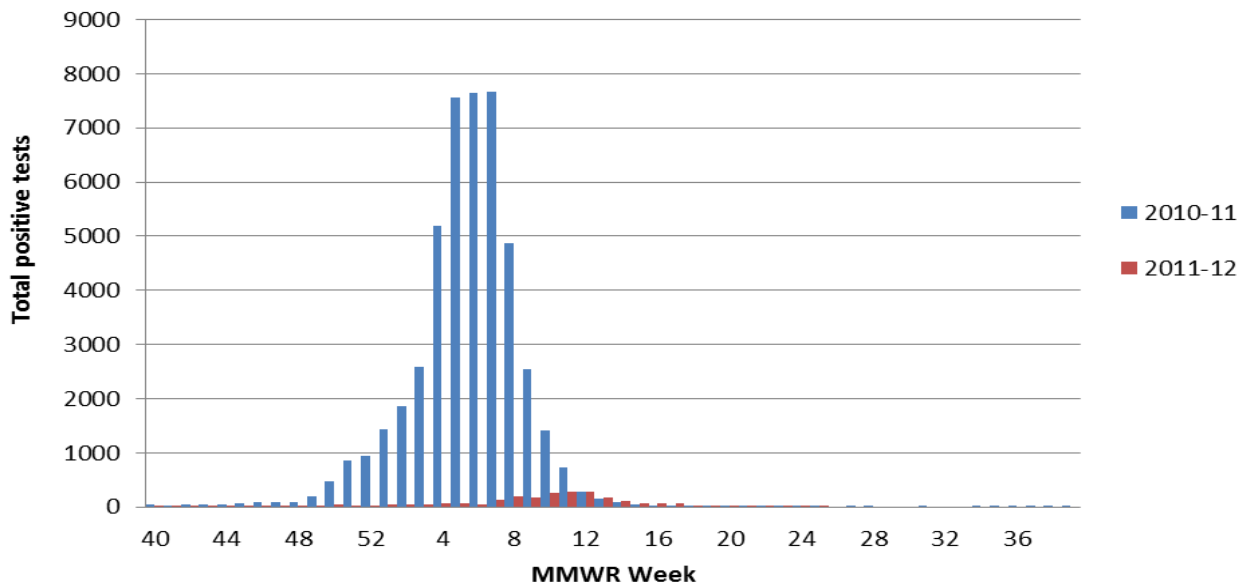
\*Includes culture, PCR, DFA, IFA

\*\*Includes one unknown and one influenza A & B coinfection

**Positive Confirmatory Test Results by MMWR Week  
2011-2012 Influenza Season (N=136)**



### Positive Rapid Tests by MMWR Week 2010-11 vs 2011-12



### Laboratory Confirmed Influenza Case rate/100,000 Hospitalizations (n=113) and Deaths (n=1) by age group October 2, 2011 - June 23, 2012

