



# Flu Watch

MMWR Week 30  
July 22-July 28, 2012

Summer Edition

South Carolina Department of Health and Environmental Control  
Division of Acute Disease Epidemiology

*Summary.....1*

*ILINet.....2*

*Positive Confirmatory Tests.....3*

*Positive rapid tests.....4*

*Hospitalizations and deaths....4*

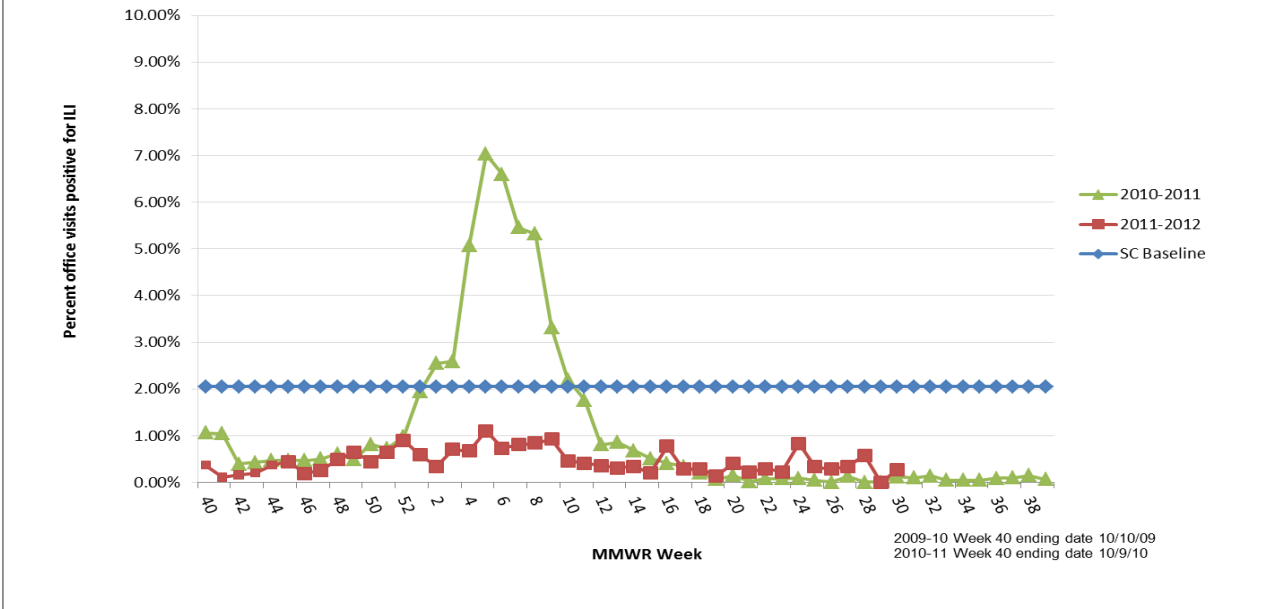
Current influenza activity level: **NO ACTIVITY**

All data are provisional and may change as new reports are received.

ILI Activity, Positive Confirmatory Tests, Influenza Associated Hospitalizations and Deaths, and Positive Rapid Tests

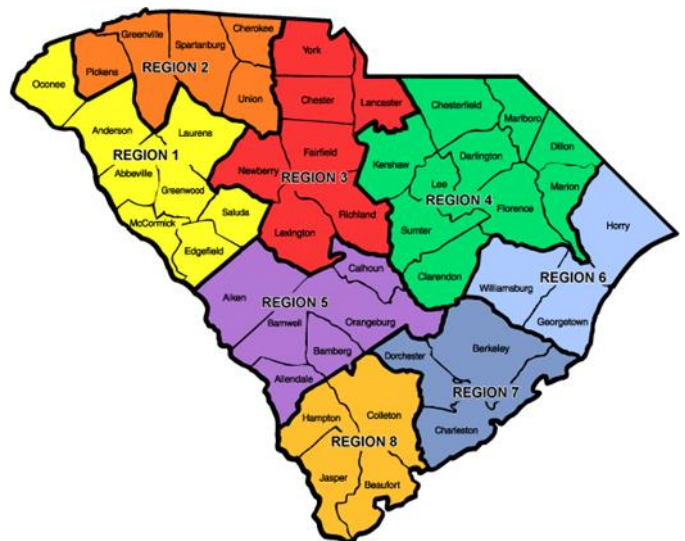
	<i>Previous week</i>	<i>Current week</i>	▲	Cumulative (10/2/11-7/28/12)
Visits for ILI to ILINet providers (%)	0	.27	▲ .27	NA
Positive confirmatory tests	0	0	0	137
Lab confirmed flu hospitalizations	0	1	▲ 1	114
Lab confirmed flu deaths	0	0	0	1
Positive rapid tests	2	1	▼ 1	

**Percentage of Visits for Influenza-like Illness (ILI) Reported by Sentinel Providers in South Carolina  
2010-2011 and 2011-2012 Influenza Seasons**



**ILI Percentage by Geographic Region**

Geographic Region	ILI %	# of Reporters
Upstate-Regions 1 -2	0	2
Midlands-Regions 3-5	.42	4
Coastal-Regions 6-8	NA	0



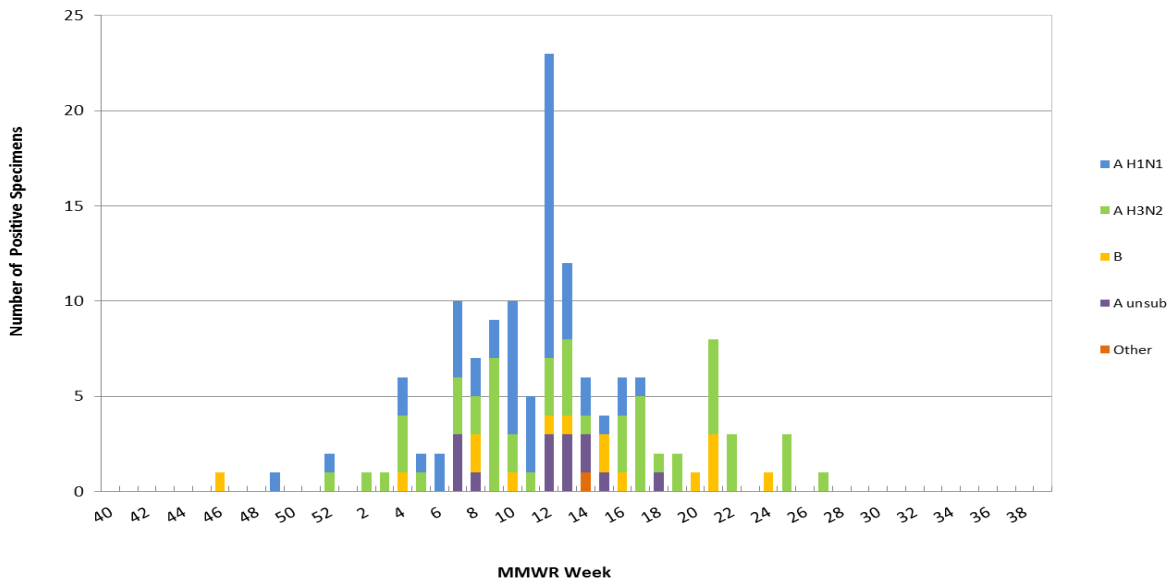
**Positive confirmatory influenza test results\***  
**Cumulative (10/2/11 – 7/28/12)**

	BOL	Other clinical labs
Number of specimens tested	184	NA
Number of positive tests	99	38
Influenza A unsubtype		16
Influenza A H1N1	38	11
Influenza A H3N2	48	7
Influenza B	13	2
Other**		2

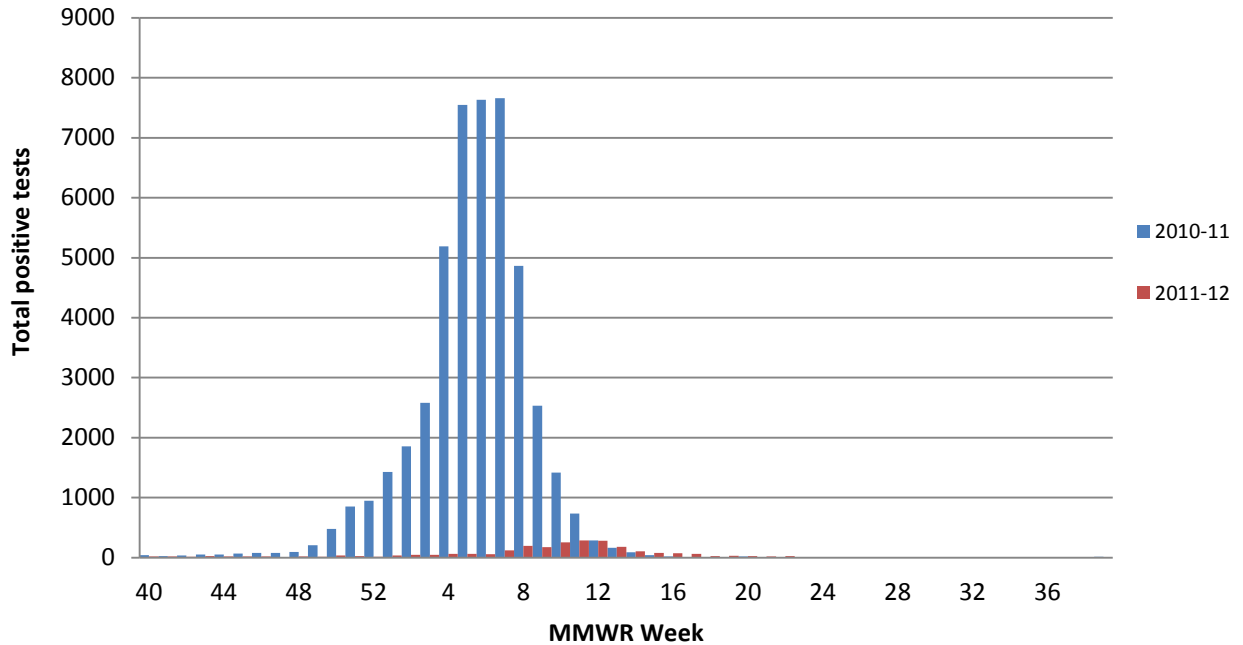
\*Includes culture, PCR, DFA, IFA

\*\*Includes one unknown and one influenza A & B coinfection

**Positive Confirmatory Test Results by MMWR Week**  
**2011-2012 Influenza Season (N=137)**



## Positive Rapid Tests by MMWR Week 2010-11 vs 2011-12



## Laboratory Confirmed Influenza Case rate/100,000 Hospitalizations (n=114) and Deaths (n=1) by age group October 2, 2011 - July 28, 2012

