



# Flu Watch

MMWR Week 35  
August 26-September 1, 2012

Summer Edition

South Carolina Department of Health and Environmental Control  
Division of Acute Disease Epidemiology

*Summary.....1*

*ILINet.....2*

*Positive Confirmatory Tests.....3*

*Positive rapid tests.....4*

*Hospitalizations and deaths....4*

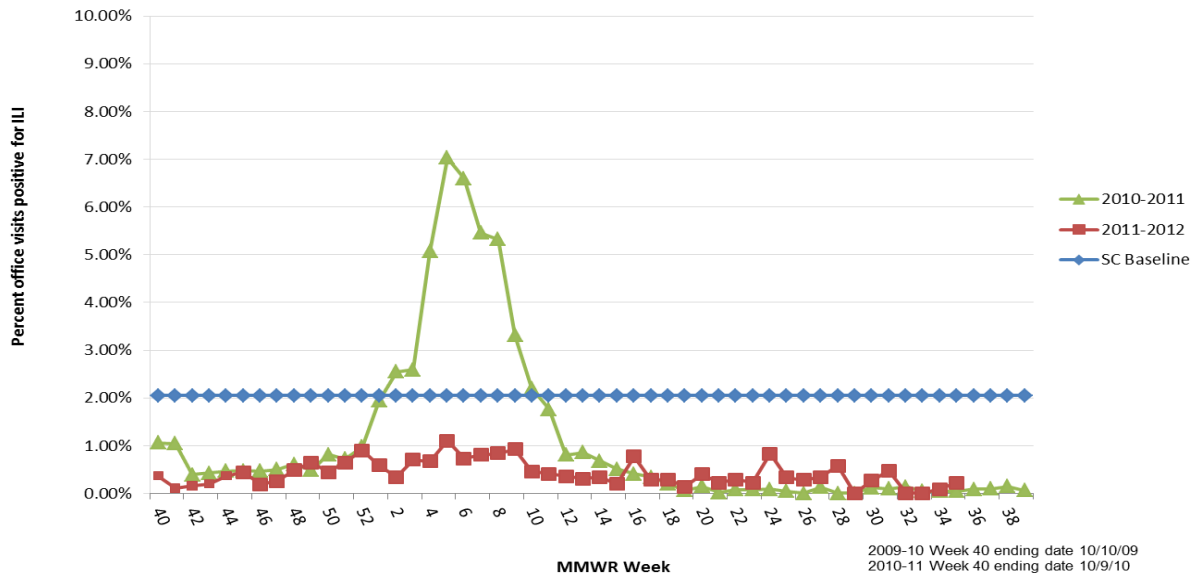
Current influenza activity level: **NO ACTIVITY**

All data are provisional and may change as new reports are received.

ILI Activity, Positive Confirmatory Tests, Influenza Associated Hospitalizations and Deaths, and Positive Rapid Tests

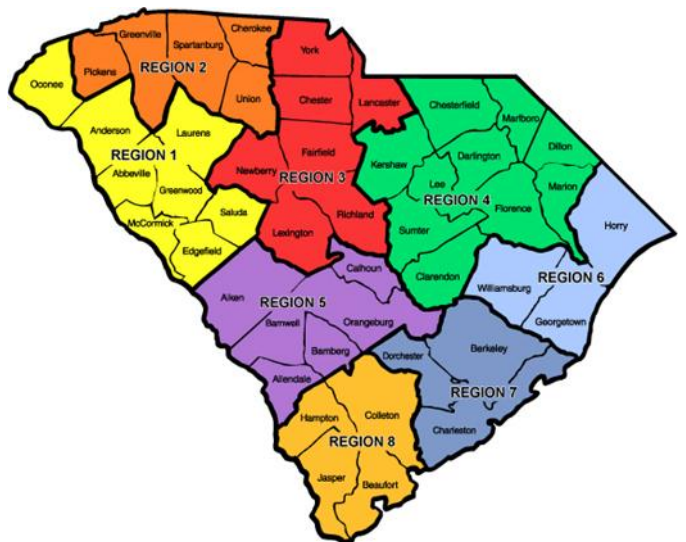
	<i>Previous week</i>	<i>Current week</i>	▲	Cumulative (10/2/11-9/1/12)
Visits for ILI to ILINet providers (%)	.09	.22	▲ .13	NA
Positive confirmatory tests	0	0	0	138
Lab confirmed flu hospitalizations	0	0	0	115
Lab confirmed flu deaths	0	0	0	1
Positive rapid tests	9	0	▼ 9	2579

**Percentage of Visits for Influenza-like Illness (ILI) Reported by Sentinel Providers in South Carolina  
2010-2011 and 2011-2012 Influenza Seasons**



**ILI Percentage by Geographic Region**

Geographic Region	ILI %	# of Reporters
Upstate-Regions 1 -2	.22	4
Midlands-Regions 3-5	.05	4
Coastal-Regions 6-8	.94	1



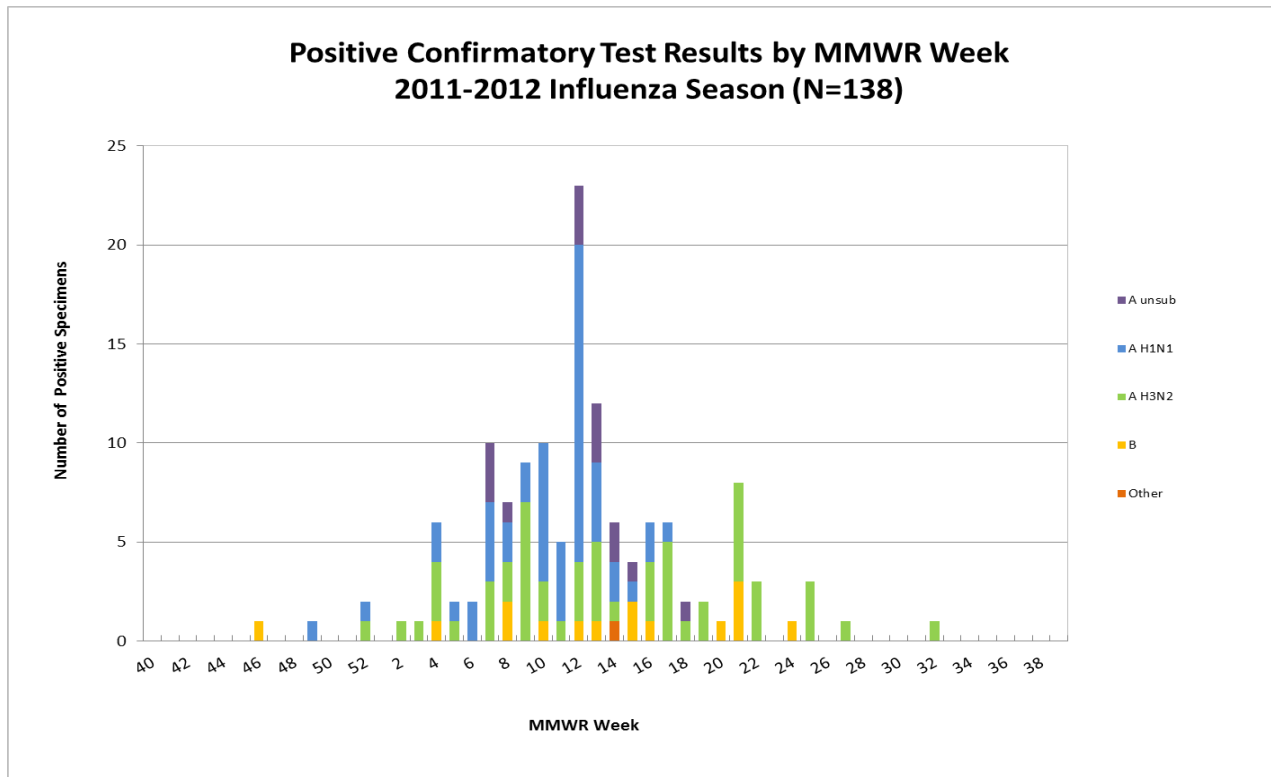
**Positive confirmatory influenza test results\***  
**Cumulative (10/2/11–9/1/12)**

	BOL	Other clinical labs
Number of specimens tested	187	NA
Number of positive tests	100	38
Influenza A unsubtype		16
Influenza A H1N1	38	11
Influenza A H3N2 <sup>†</sup>	49	7
Influenza B	13	2
Other <sup>**</sup>		2

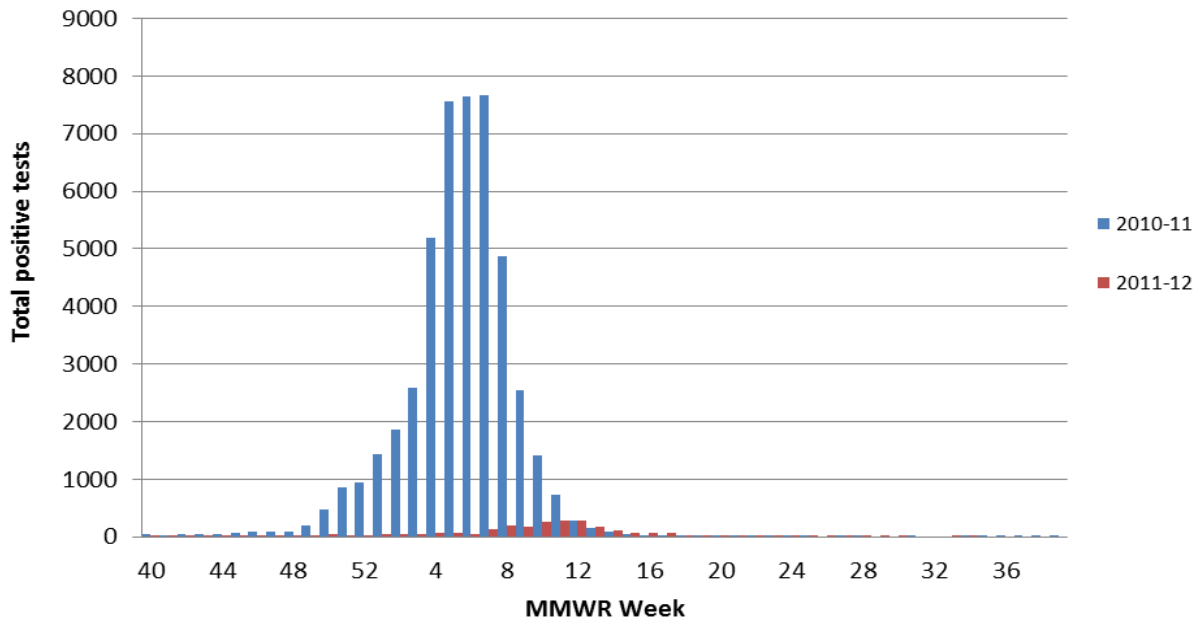
\*Includes culture, PCR, DFA, IFA

<sup>†</sup> Indicates seasonal influenza. No cases of variant influenza H3N2 (H3N2v) have been identified in SC.

\*\*Includes one unknown and one influenza A & B coinfection



### Positive Rapid Tests by MMWR Week 2010-11 vs 2011-12



### Laboratory Confirmed Influenza Case rate/100,000 Hospitalizations (n=114) and Deaths (n=1) by age group October 2, 2011 - September 1, 2012

