



Flu Watch

MMWR Week 36
September 2-September 8, 2012

Summer Edition

South Carolina Department of Health and Environmental Control
Division of Acute Disease Epidemiology

Summary.....1

ILINet.....2

Positive Confirmatory Tests.....3

Positive rapid tests.....4

Hospitalizations and deaths....4

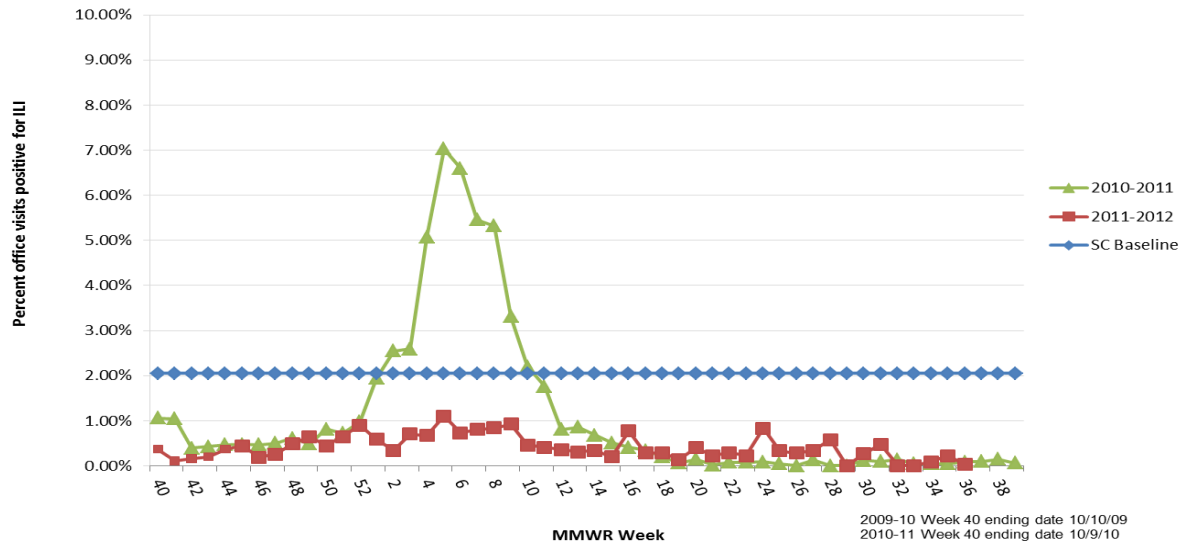
Current influenza activity level: **NO ACTIVITY**

All data are provisional and may change as new reports are received.

ILI Activity, Positive Confirmatory Tests, Influenza Associated Hospitalizations and Deaths, and Positive Rapid Tests

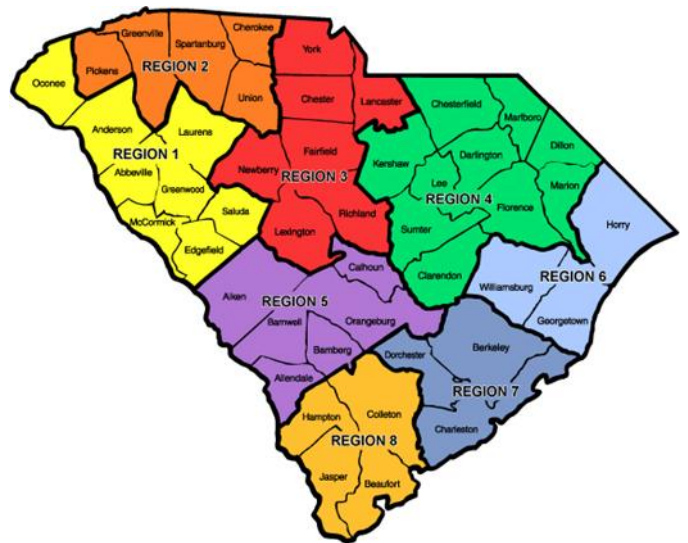
	<i>Previous week</i>	<i>Current week</i>	▲	Cumulative (10/2/11-9/8/12)
Visits for ILI to ILINet providers (%)	.22	.03	▼.19	NA
Positive confirmatory tests	0	0	0	138
Lab confirmed flu hospitalizations	0	1	1	116
Lab confirmed flu deaths	0	0	0	1
Positive rapid tests	0	9	▲9	2588

**Percentage of Visits for Influenza-like Illness (ILI) Reported by Sentinel Providers in South Carolina
2010-2011 and 2011-2012 Influenza Seasons**



ILI Percentage by Geographic Region

Geographic Region	ILI %	# of Reporters
Upstate-Regions 1 -2	0	5
Midlands-Regions 3-5	.05	5
Coastal-Regions 6-8	NA	0



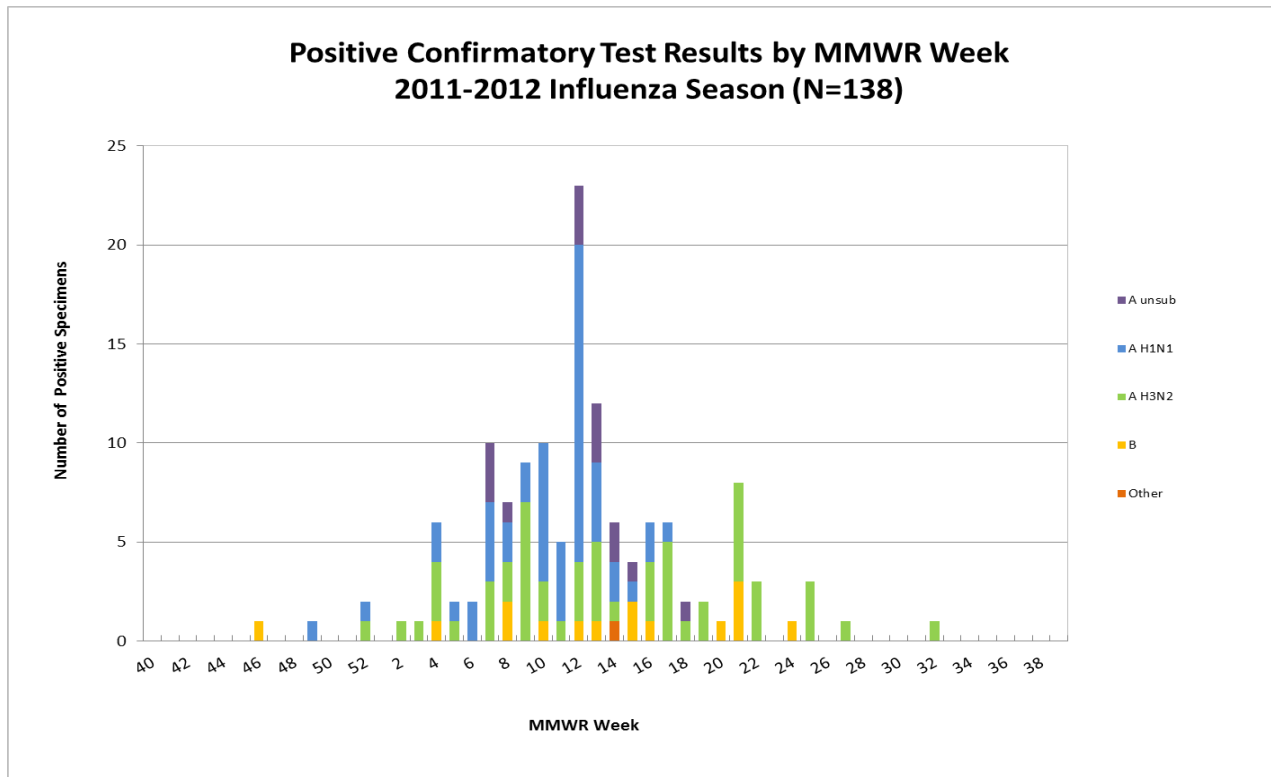
Positive confirmatory influenza test results*
Cumulative (10/2/11–9/8/12)

	BOL	Other clinical labs
Number of specimens tested	189	NA
Number of positive tests	100	38
Influenza A unsubtype		16
Influenza A H1N1	38	11
Influenza A H3N2 [†]	49	7
Influenza B	13	2
Other ^{**}		2

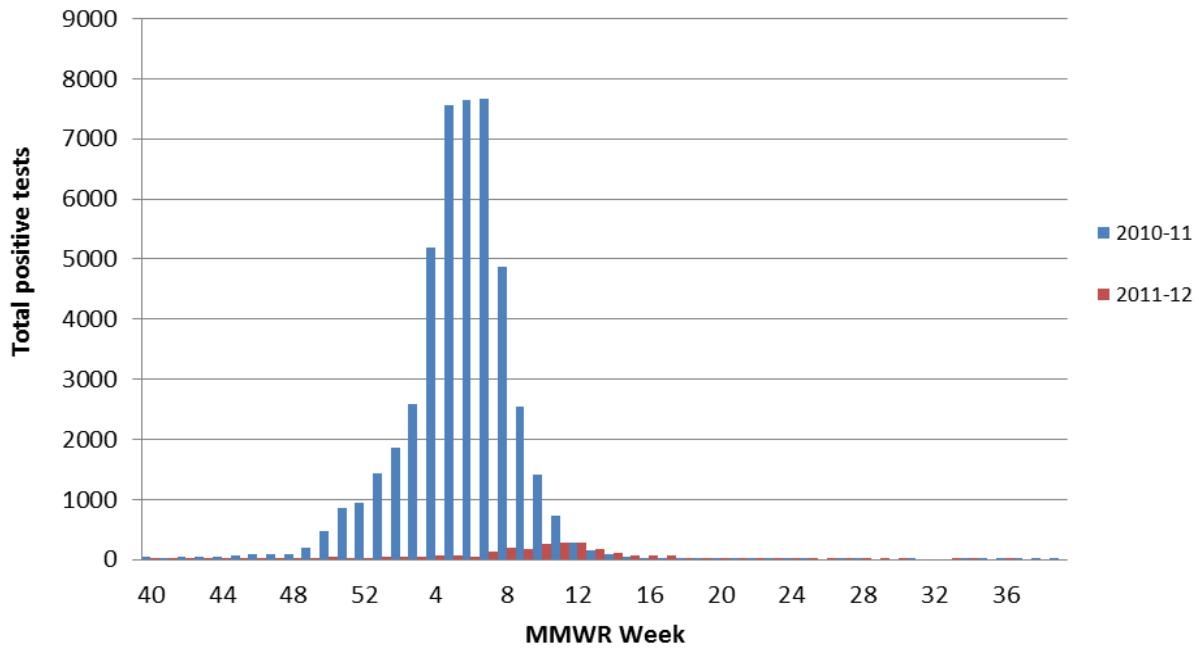
*Includes culture, PCR, DFA, IFA

[†] Indicates seasonal influenza. No cases of variant influenza H3N2 (H3N2v) have been identified in SC.

**Includes one unknown and one influenza A & B coinfection



Positive Rapid Tests by MMWR Week 2010-11 vs 2011-12



Laboratory Confirmed Influenza Case rate/100,000 Hospitalizations (n=116) and Deaths (n=1) by age group October 2, 2011 - September 8, 2012

