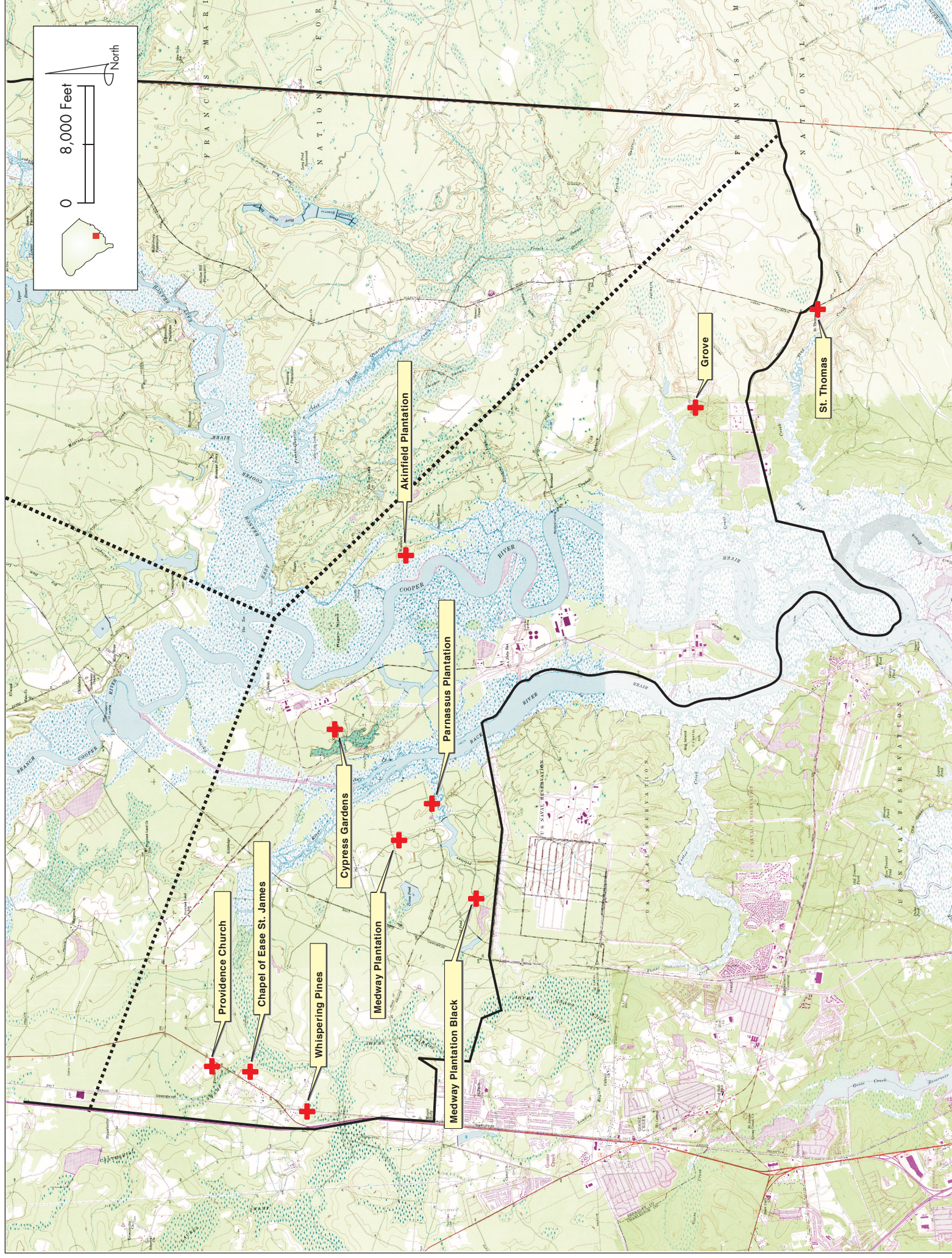


Figure 18
Locations of Recorded Cemeteries in the Lower West Branch of the Cooper River Valley



Source: Dept. of Natural Resources, Berkeley County, South Carolina, Quads; Mt. Holly 1957 (PR1979), Kittredge 1950 (PR1979), Huger 1950 (PR 1971), Ladson 1958 (PR 1979), North Charleston 1958 (PR1979), Cainhoy 1958 (PR1971)