

Infant Mortality and Selected Birth Characteristics

2021 South Carolina Residence Data

**South Carolina Department of Health
and Environmental Control**

Vital Statistics

2600 Bull Street
Columbia, SC 29201

Phone: (803) 898-3649

Fax: (803) 898-3661



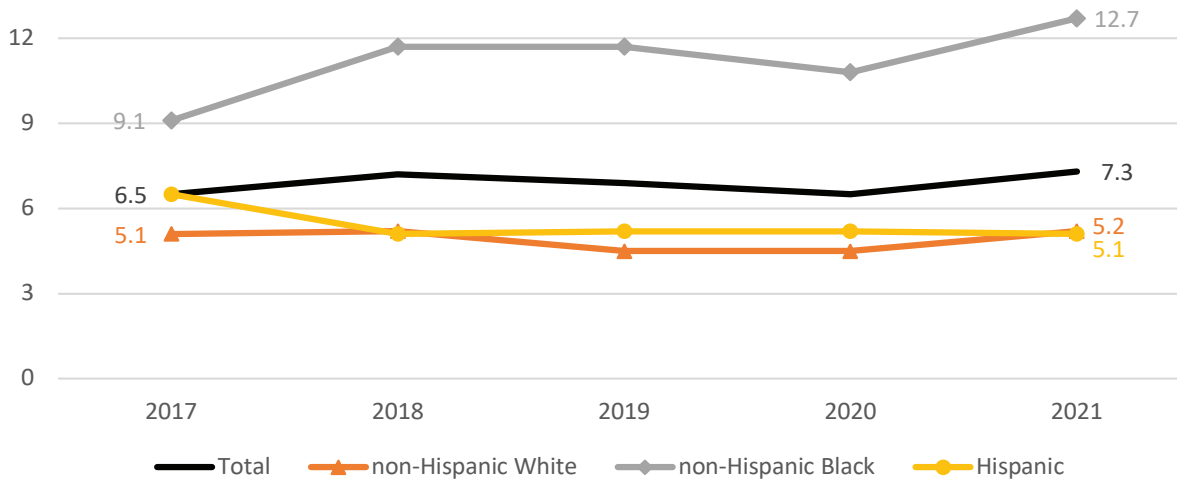
Executive Summary

Infant mortality, defined as the death of a live-born baby before its first birthday, is a reflection of the overall state of a population's health. The infant mortality rate (IMR) is the number of babies who die within the first year of life per 1,000 live births. In the United States (US), the IMR is recognized as a leading health indicator and its reduction is a high-priority Healthy People 2030 objective.¹ The South Carolina Department of Health and Environmental Control (SC DHEC) monitors the IMR and administers programs aimed at improving the health of mothers, babies, and families across the state. In 2021, there were 416 infants who died during the first year of life.

While the US IMR has been declining over the past several years,² SC's rate increased 12.3% from 6.5 infant deaths per 1,000 live births in 2020 to 7.3 infant deaths per 1,000 live births in 2021. The IMR varies by race and ethnicity of the mother as shown in the figure below.

Trend in Infant Mortality, by Race and Hispanic Origin* of the Mother: 2017-2021

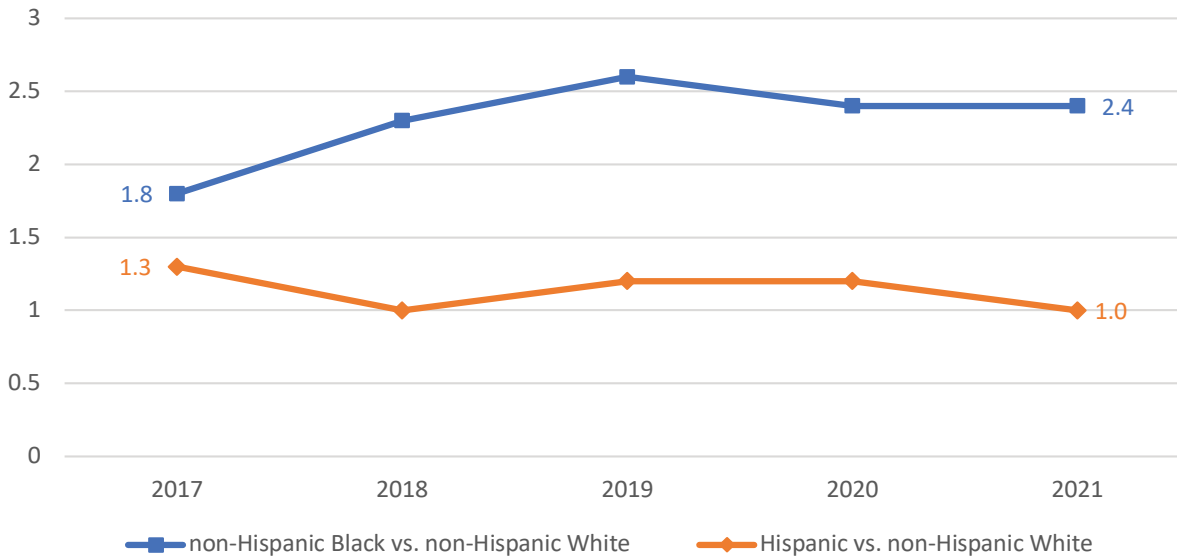
Rate per 1,000 live births



*Due to small numbers among the non-Hispanic Other population, rates are not shown in the graph.

The IMR was lowest among births to non-Hispanic White women (5.2 infant deaths per 1,000 live births) and Hispanic women (5.1 infant deaths per 1,000 live births) in 2021. Comparatively, the IMR was more than twice as high among live births to non-Hispanic Black women (12.7 infant deaths per 1,000 live births). This racial disparity in infant mortality remains a concern in SC, and as shown in the graph below, the gap has increased from 1.8 to 2.4 in the past five years. While the IMR among births to non-Hispanic White women has remained stable from 2017 to 2021 (5.1 and 5.2, respectively), the IMR among births to non-Hispanic Black mothers has increased 39.6% from 9.1 in 2017 to 12.7 infant deaths per 1,000 live births in 2021.

Disparity Ratio in Infant Mortality, by Race and Hispanic Origin* of the Mother: 2017-2021



*Due to small numbers among the non-Hispanic Other population, rates are not included in disparity calculations.

The IMR increased across both the neonatal (less than 28 days after birth) and postneonatal (from 28 days to 11 months after birth) periods in 2021. The increase in the SC IMR was largely attributed to a 23.8% increase in postneonatal mortality between years 2020 and 2021 (Table 5). The 2021 neonatal mortality rate (7 neonatal deaths per 1,000 live births) increased 6.8% from the 2020 rate of 4.0 neonatal deaths per 1,000 live births.

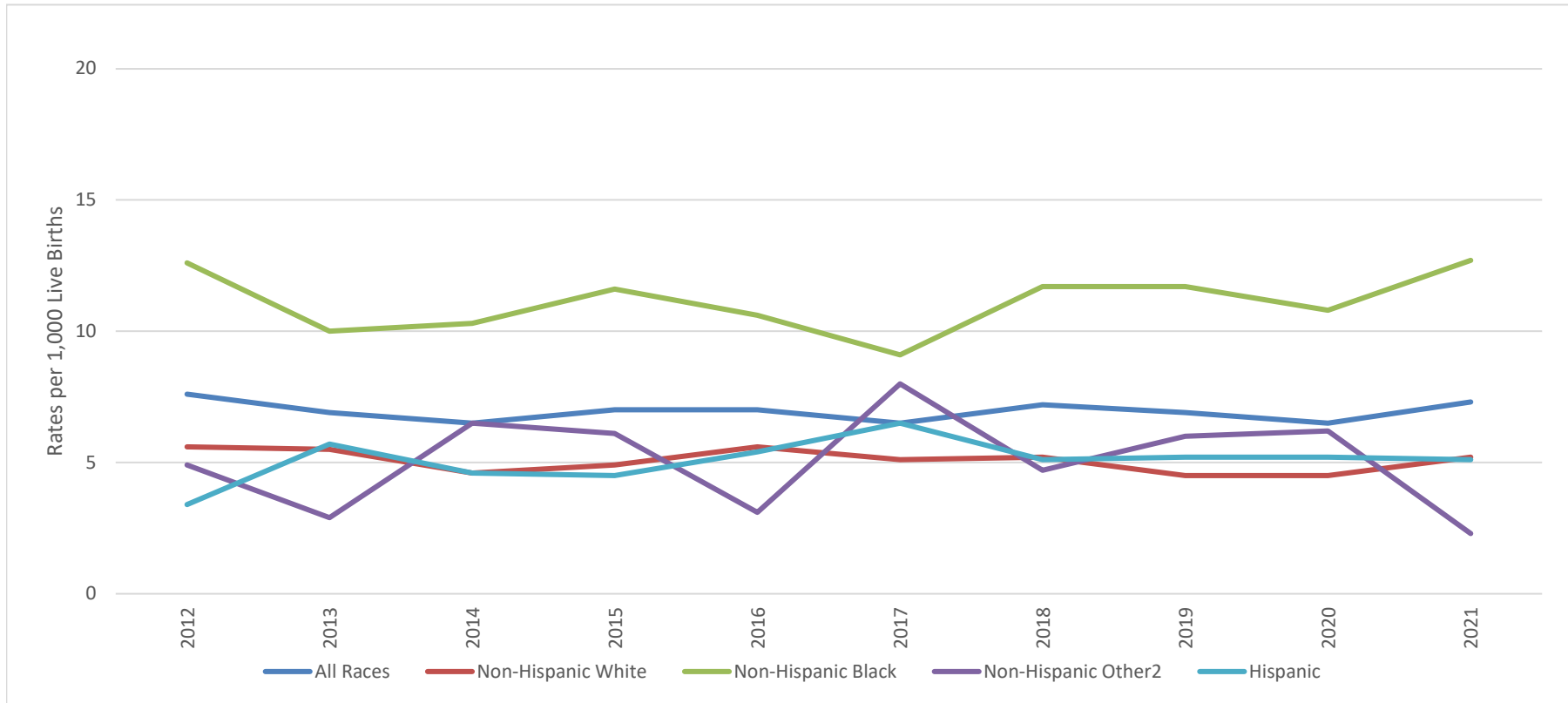
The three leading causes of infant death in 2021 were congenital malformations or birth defects, disorders related to short gestation and low birthweight, and maternal complications of pregnancy (Table 8). Deaths due to sudden infant death syndrome (SIDS) more than doubled from 2020 to 2021, ranking fourth in leading causes of death. Accidents was the fifth leading cause of infant deaths in 2021, with 25 of the 26 accidental deaths due to suffocation or strangulation in bed. Notable changes in the distribution of infant deaths from 2020 to 2021 include a 17.5% reduction in deaths from short gestation and low birthweight, a 40% increase in deaths related to maternal complications, a 97% increase from SIDS, and an 18.2% decrease in deaths from accidents.

SC DHEC administers many longstanding programs committed to improving the health of women and infants before, during, and after pregnancy. The agency and the State's Title V program continues to partner with organizations such as the SC Hospital Association, SC Department of Health and Human Services, and the SC Chapter of the March of Dimes and remains an active participant of the SC Birth Outcomes Initiative to address access to quality maternal, infant, and child health services, including preventive and primary care, access to prenatal, delivery, and postnatal care to women, and regular screenings and follow-up.

References:

1. Healthy People 2030. Washington, DC: U.S. Department of Health and Human Services, Office of Disease Prevention and Health Promotion. Retrieved from <https://health.gov/healthypeople>.
2. Murphy SL, Kochanek KD, Xu JQ, Arias E. Mortality in the United States, 2020. NCHS Data Brief, no 427. Hyattsville, MD: National Center for Health Statistics. 2021.

South Carolina Infant Mortality Rates¹ by Race and Hispanic Origin of Mother Residence Data, 2012-2021



	2012	2013	2014	2015	2016	2017	2018	2019	2020	2021
All Races	7.6	6.9	6.5	7.0	7.0	6.5	7.2	6.9	6.5	7.3
Non-Hispanic White	5.6	5.5	4.6	4.9	5.6	5.1	5.2	4.5	4.5	5.2
Non-Hispanic Black	12.6	10.0	10.3	11.6	10.6	9.1	11.7	11.7	10.8	12.7
Non-Hispanic Other ²	4.9	2.9	6.5	6.1	3.1	8.0	4.7	6.0	6.2	2.3
Hispanic	3.4	5.7	4.6	4.5	5.4	6.5	5.1	5.2	5.2	5.1

¹Rates per 1,000 live births

²Rates per 1,000 live births. Rates calculated with 20 or fewer deaths are unreliable and should be used cautiously.

Source: SC DHEC, Vital Statistics

Table 1.
 Infant Mortality Rates¹ with 95% Confidence Intervals²
 South Carolina, 2012-2021
 (Residence Data)

Year	Number of Live Births	Number of Infant Deaths	Infant Mortality Rate	95% Confidence Intervals
2012	57,100	435	7.6	(6.9, 8.3)
2013	56,743	389	6.9	(6.2, 7.6)
2014	57,631	372	6.5	(5.8, 7.2)
2015	58,135	405	7.0	(6.3, 7.7)
2016	57,337	401	7.0	(6.3, 7.7)
2017	57,030	371	6.5	(5.8, 7.2)
2018	56,668	406	7.2	(6.5, 7.9)
2019	57,044	391	6.9	(6.2, 7.6)
2020	55,713	364	6.5	(5.9, 7.2)
2021	57,179	416	7.3	(6.6, 8.0)

Table 2.
 Infant Mortality Rates¹ with 95% Confidence Intervals²
 South Carolina
 2012-2016, 2017-2021
 (Residence Data)

Years	Number of Live Births	Number of Infant Deaths	Infant Mortality Rate	95% Confidence Intervals
2012-2016	286,946	2,002	7.0	(6.7, 7.3)
2017-2021	283,634	1,948	6.9	(6.6, 7.2)

¹Rates per 1,000 live births

² $r \pm 61.981 (r/n)^{1/2}$, where r = infant mortality rate and n = number of live births

Table 3.
Infant, Neonatal and Postneonatal Mortality and Mortality Rates¹ by Race and Hispanic Origin of Mother
South Carolina
2017, 2018, 2019, 2020 and 2021
(Residence Data)

Infant Mortality															
	Total*			Non-Hispanic White			Non-Hispanic Black			Non-Hispanic Other			Hispanic		
Year	Number of Live Births	Number of Infant Deaths	Rate	Number of Live Births	Number of Infant Deaths	Rate	Number of Live Births	Number of Infant Deaths	Rate	Number of Live Births	Number of Infant Deaths	Rate	Number of Live Births	Number of Infant Deaths	Rate
2017	57,030	371	6.5	32,886	167	5.1	17,415	158	9.1	1,627	13	8.0	5,102	33	6.5
2018	56,668	406	7.2	32,575	170	5.2	17,268	202	11.7	1,689	8	4.7	5,136	26	5.1
2019	57,044	391	6.9	32,316	147	4.5	17,475	205	11.7	1,660	10	6.0	5,593	29	5.2
2020	55,713	364	6.5	31,232	139	4.5	17,051	185	10.8	1,614	10	6.2	5,816	30	5.2
2021	57,179	416	7.3	32,550	169	5.2	16,733	212	12.7	1,764	4	2.3	6,132	31	5.1

Neonatal Mortality (<28 days)															
	Total*			Non-Hispanic White			Non-Hispanic Black			Non-Hispanic Other			Hispanic		
Year	Number of Live Births	Number of Infant Deaths	Rate	Number of Live Births	Number of Infant Deaths	Rate	Number of Live Births	Number of Infant Deaths	Rate	Number of Live Births	Number of Infant Deaths	Rate	Number of Live Births	Number of Infant Deaths	Rate
2017	57,030	239	4.2	32,886	101	3.1	17,415	107	6.1	1,627	8	4.9	5,102	23	4.5
2018	56,668	272	4.8	32,575	113	3.5	17,268	136	7.9	1,689	3	1.8	5,136	20	3.9
2019	57,044	256	4.5	32,316	93	2.9	17,475	138	7.9	1,660	6	3.6	5,593	19	3.4
2020	55,713	247	4.4	31,232	100	3.2	17,051	122	7.2	1,614	7	4.3	5,816	18	3.1
2021	57,179	269	4.7	32,550	108	3.3	16,733	134	8.0	1,764	3	1.7	6,132	24	3.9

Postneonatal Mortality (28-364 days)															
	Total*			Non-Hispanic White			Non-Hispanic Black			Non-Hispanic Other			Hispanic		
Year	Number of Live Births	Number of Infant Deaths	Rate	Number of Live Births	Number of Infant Deaths	Rate	Number of Live Births	Number of Infant Deaths	Rate	Number of Live Births	Number of Infant Deaths	Rate	Number of Live Births	Number of Infant Deaths	Rate
2017	57,030	132	2.3	32,886	66	2.0	17,415	51	2.9	1,627	5	3.1	5,102	10	2.0
2018	56,668	134	2.4	32,575	57	1.7	17,268	66	3.8	1,689	5	3.0	5,136	6	1.2
2019	57,044	135	2.4	32,316	54	1.7	17,475	67	3.8	1,660	4	2.4	5,593	10	1.8
2020	55,713	117	2.1	31,232	39	1.2	17,051	63	3.7	1,614	3	1.9	5,816	12	2.1
2021	57,179	147	2.6	32,550	61	1.9	16,733	78	4.7	1,764	1	0.6	6,132	7	1.1

¹Rates per 1,000 live births

*Includes unknown race/ethnicity of mother

Table 4.
Infant Mortality and Infant Mortality Rates¹
South Carolina and Each County, 2021, 2019-2021, 2016-2018
(Residence Data)

County of Residence	2021		2019-2021		2016-2018	
	Number	Rate	Number	Rate	Number	Rate
South Carolina	416	7.3	1,171	6.9	1,178	6.9
Abbeville	<5	-	8	11.5	5	7.3
Aiken	10	5.2	37	6.6	47	8.2
Allendale	<5	-	<5	-	<5	-
Anderson	20	8.7	46	6.9	44	6.4
Bamberg	<5	-	<5	-	5	12.9
Barnwell	<5	-	7	8.8	9	12.4
Beaufort	14	7.5	34	6.1	24	4.1
Berkeley	16	5.6	44	5.2	39	4.7
Calhoun	<5	-	<5	-	7	17.4
Charleston	38	7.6	99	6.6	75	5.1
Cherokee	<5	-	15	7.8	11	5.5
Chester	<5	-	12	11.4	12	11.1
Chesterfield	<5	-	12	8.3	18	12.0
Clarendon	5	17.1	11	12.1	9	9.5
Colleton	<5	-	14	10.3	9	6.6
Darlington	6	8.2	19	8.4	18	7.9
Dillon	6	15.4	12	10.0	14	11.4
Dorchester	11	5.7	34	6.0	35	6.4
Edgefield	<5	-	<5	-	<5	-
Fairfield	<5	-	6	10.3	7	11.2
Florence	16	9.9	61	12.6	52	10.5
Georgetown	<5	-	8	5.4	12	7.3
Greenville	39	5.9	102	5.3	123	6.5
Greenwood	6	8.0	17	7.1	26	10.7
Hampton	<5	-	12	20.4	<5	-
Horry	16	4.9	60	6.3	66	7.0
Jasper	<5	-	8	7.2	12	11.1
Kershaw	5	6.7	13	6.0	15	6.6
Lancaster	<5	-	19	6.1	20	6.5
Laurens	7	9.6	14	6.4	18	7.6
Lee	<5	-	5	10.2	7	13.0
Lexington	21	6.2	54	5.5	62	6.4
McCormick	<5	-	<5	-	<5	-
Marion	<5	-	13	13.2	11	10.2
Marlboro	<5	-	6	7.3	13	15.5
Newberry	7	16.8	16	13.0	10	7.9
Oconee	<5	-	17	8.6	18	8.3
Orangeburg	17	20.8	36	13.8	28	9.5
Pickens	7	6.0	20	5.5	19	5.4
Richland	34	7.4	94	6.7	116	8.2
Saluda	<5	-	7	10.5	<5	-
Spartanburg	25	6.5	69	5.9	61	5.4
Sumter	13	9.7	36	8.7	27	6.6
Union	5	20.5	9	11.2	<5	-
Williamsburg	<5	-	6	7.3	8	8.5
York	19	6.2	46	5.2	49	5.5

¹Rates per 1,000 live births. Rates calculated with 20 or fewer deaths are unreliable and should be used cautiously.

Table 4-A.

Non-Hispanic White¹ Infant Mortality and Infant Mortality Rates²
 South Carolina and Each County, 2021, 2019-2021, 2016-2018
 (Residence Data)

County of Residence	2021		2019-2021		2016-2018	
	Number	Rate	Number	Rate	Number	Rate
South Carolina	169	5.2	455	4.7	524	5.3
Abbeville	<5	-	<5	-	<5	-
Aiken	<5	-	11	3.3	24	6.8
Allendale	0	0.0	0	0.0	0	0.0
Anderson	9	5.3	26	5.4	30	5.8
Bamberg	0	0.0	0	0.0	0	0.0
Barnwell	<5	-	<5	-	5	14.2
Beaufort	<5	-	12	4.0	9	2.9
Berkeley	9	5.5	18	3.7	18	3.5
Calhoun	0	0.0	0	0.0	<5	-
Charleston	20	6.6	38	4.3	25	2.9
Cherokee	0	0.0	9	6.9	8	6.0
Chester	<5	-	6	10.9	7	12.0
Chesterfield	<5	-	<5	-	9	10.3
Clarendon	<5	-	<5	-	<5	-
Colleton	<5	-	5	6.8	5	7.1
Darlington	<5	-	10	9.5	7	6.4
Dillon	<5	-	6	12.5	<5	-
Dorchester	6	5.5	12	3.7	18	5.3
Edgefield	<5	-	<5	-	0	0.0
Fairfield	0	0.0	<5	-	<5	-
Florence	<5	-	18	8.5	14	6.5
Georgetown	<5	-	5	6.2	8	9.2
Greenville	22	5.5	43	3.7	58	4.9
Greenwood	<5	-	<5	-	6	4.9
Hampton	<5	-	<5	-	<5	-
Horry	6	2.9	29	4.8	35	5.6
Jasper	0	0.0	<5	-	<5	-
Kershaw	<5	-	8	5.8	10	6.9
Lancaster	<5	-	11	5.2	11	5.2
Laurens	<5	-	<5	-	7	4.6
Lee	0	0.0	0	0.0	<5	-
Lexington	12	5.5	30	4.7	37	5.5
McCormick	0	0.0	0	0.0	0	0.0
Marion	<5	-	<5	-	<5	-
Marlboro	0	0.0	<5	-	6	17.1
Newberry	<5	-	<5	-	<5	-
Oconee	<5	-	16	9.9	16	9.0
Orangeburg	<5	-	<5	-	<5	-
Pickens	6	6.1	18	5.9	16	5.4
Richland	7	4.7	13	2.8	28	5.6
Saluda	0	0.0	<5	-	<5	-
Spartanburg	12	4.8	37	4.9	39	5.3
Sumter	5	9.5	17	10.1	9	5.1
Union	<5	-	<5	-	<5	-
Williamsburg	0	0.0	0	0.0	<5	-
York	5	2.5	15	2.6	28	4.7

¹Race/Ethnicity of mother²Rates per 1,000 live births. Rates calculated with 20 or fewer deaths are unreliable and should be used cautiously.

Table 4-B.

Non-Hispanic Black¹ Infant Mortality and Infant Mortality Rates²
 South Carolina and Each County, 2021, 2019-2021, 2016-2018
 (Residence Data)

County of Residence	2021		2019-2021		2016-2018	
	Number	Rate	Number	Rate	Number	Rate
South Carolina	212	12.7	602	11.7	542	10.5
Abbeville	<5	-	6	31.9	<5	-
Aiken	8	13.4	24	14.2	19	11.3
Allendale	<5	-	<5	-	<5	-
Anderson	10	25.2	18	14.3	12	9.6
Bamberg	<5	-	<5	-	5	22.1
Barnwell	0	0.0	5	14.0	<5	-
Beaufort	9	22.7	19	15.4	13	9.8
Berkeley	<5	-	19	9.0	13	6.7
Calhoun	<5	-	<5	-	<5	-
Charleston	16	13.2	51	13.1	45	10.9
Cherokee	<5	-	6	11.9	<5	-
Chester	0	0.0	6	12.8	5	10.8
Chesterfield	<5	-	7	12.8	9	16.7
Clarendon	<5	-	7	14.3	<5	-
Colleton	<5	-	8	15.3	<5	-
Darlington	<5	-	9	8.0	10	8.9
Dillon	<5	-	<5	-	8	12.4
Dorchester	5	9.1	18	11.0	14	9.4
Edgefield	0	0.0	<5	-	<5	-
Fairfield	<5	-	<5	-	5	12.7
Florence	10	13.3	39	16.3	33	13.0
Georgetown	<5	-	<5	-	<5	-
Greenville	10	8.0	41	10.8	47	12.5
Greenwood	<5	-	12	13.1	16	17.5
Hampton	<5	-	9	28.8	<5	-
Horry	9	15.4	26	15.0	22	12.4
Jasper	<5	-	<5	-	<5	-
Kershaw	<5	-	<5	-	5	8.3
Lancaster	0	0.0	5	7.2	9	12.8
Laurens	5	25.9	9	15.3	10	15.2
Lee	<5	-	5	15.2	<5	-
Lexington	7	9.9	17	8.8	18	10.5
McCormick	<5	-	<5	-	<5	-
Marion	<5	-	11	16.7	9	12.9
Marlboro	<5	-	5	11.6	6	14.1
Newberry	<5	-	11	23.6	7	15.4
Oconee	0	0.0	0	0.0	<5	-
Orangeburg	15	29.1	33	19.3	23	12.0
Pickens	<5	-	<5	-	<5	-
Richland	26	10.1	70	9.0	74	9.7
Saluda	0	0.0	<5	-	0	0.0
Spartanburg	10	12.0	24	9.4	17	6.7
Sumter	8	11.5	18	8.4	17	8.4
Union	<5	-	5	17.7	<5	-
Williamsburg	<5	-	6	10.9	6	9.4
York	10	14.6	24	11.5	18	9.0

¹Race/Ethnicity of mother

²Rates per 1,000 live births. Rates calculated with 20 or fewer deaths are unreliable and should be used cautiously.

Table 4-C.

Non-Hispanic Other¹ Infant Mortality and Infant Mortality Rates²
 South Carolina and Each County, 2021, 2019-2021, 2016-2018
 (Residence Data)

County of Residence	2021		2019-2021		2016-2018	
	Number	Rate	Number	Rate	Number	Rate
South Carolina	<5	-	24	4.8	26	5.3
Abbeville	0	0.0	0	0.0	0	0.0
Aiken	0	0.0	<5	14.5	<5	6.9
Allendale	0	0.0	0	0.0	0	0.0
Anderson	0	0.0	0	0.0	0	0.0
Bamberg	0	0.0	0	0.0	0	0.0
Barnwell	0	0.0	0	0.0	0	0.0
Beaufort	0	0.0	0	0.0	0	0.0
Berkeley	<5	-	<5	14.7	<5	3.9
Calhoun	0	0.0	0	0.0	0	0.0
Charleston	0	0.0	<5	-	<5	-
Cherokee	0	0.0	0	0.0	0	0.0
Chester	0	0.0	0	0.0	0	0.0
Chesterfield	0	0.0	<5	-	0	0.0
Clarendon	0	0.0	0	0.0	0	0.0
Colleton	0	0.0	0	0.0	<5	-
Darlington	0	0.0	0	0.0	<5	-
Dillon	0	0.0	<5	-	<5	-
Dorchester	0	0.0	<5	-	<5	-
Edgefield	0	0.0	0	0.0	0	0.0
Fairfield	0	0.0	0	0.0	0	0.0
Florence	0	0.0	0	0.0	<5	-
Georgetown	0	0.0	0	0.0	0	0.0
Greenville	0	0.0	<5	-	<5	-
Greenwood	0	0.0	0	0.0	0	0.0
Hampton	0	0.0	0	0.0	0	0.0
Horry	0	0.0	0	0.0	<5	-
Jasper	0	0.0	0	0.0	<5	-
Kershaw	0	0.0	0	0.0	0	0.0
Lancaster	0	0.0	0	0.0	0	0.0
Laurens	0	0.0	0	0.0	0	0.0
Lee	0	0.0	0	0.0	0	0.0
Lexington	0	0.0	<5	-	<5	-
McCormick	0	0.0	0	0.0	0	0.0
Marion	0	0.0	0	0.0	0	0.0
Marlboro	0	0.0	0	0.0	<5	-
Newberry	0	0.0	0	0.0	0	0.0
Oconee	0	0.0	<5	-	0	0.0
Orangeburg	0	0.0	0	0.0	0	0.0
Pickens	0	0.0	0	0.0	0	0.0
Richland	<5	-	5	10.2	<5	-
Saluda	0	0.0	0	0.0	0	0.0
Spartanburg	<5	-	<5	-	<5	-
Sumter	0	0.0	0	0.0	0	0.0
Union	0	0.0	0	0.0	0	0.0
Williamsburg	0	0.0	0	0.0	<5	-
York	<5	-	<5	-	<5	-

¹Race/Ethnicity of mother

²Rates per 1,000 live births. Rates calculated with 20 or fewer deaths are unreliable and should be used cautiously.

Table 4-D.
Hispanic¹ Infant Mortality and Infant Mortality Rates²
South Carolina and Each County, 2021, 2019-2021, 2016-2018
(Residence Data)

County of Residence	2021		2019-2021		2016-2018	
	Number	Rate	Number	Rate	Number	Rate
South Carolina	31	5.1	90	5.1	86	5.6
Abbeville	0	0.0	0	0.0	0	0.0
Aiken	0	0.0	0	0.0	<5	8.4
Allendale	0	0.0	0	0.0	0	0.0
Anderson	<5	-	<5	-	<5	6.3
Bamberg	0	0.0	0	0.0	0	0.0
Barnwell	0	0.0	0	0.0	0	0.0
Beaufort	<5	-	<5	-	<5	-
Berkeley	<5	-	<5	-	7	7.3
Calhoun	0	0.0	0	0.0	0	0.0
Charleston	<5	-	8	4.4	<5	-
Cherokee	0	0.0	0	0.0	0	0.0
Chester	0	0.0	0	0.0	0	0.0
Chesterfield	0	0.0	0	0.0	0	0.0
Clarendon	0	0.0	<5	-	<5	-
Colleton	<5	-	<5	-	0	0.0
Darlington	0	0.0	0	0.0	0	0.0
Dillon	0	0.0	0	0.0	<5	-
Dorchester	0	0.0	<5	-	<5	-
Edgefield	0	0.0	0	0.0	0	0.0
Fairfield	0	0.0	0	0.0	0	0.0
Florence	<5	-	<5	-	<5	-
Georgetown	0	0.0	<5	-	<5	-
Greenville	7	6.2	17	5.4	16	5.9
Greenwood	0	0.0	<5	-	<5	-
Hampton	0	0.0	0	0.0	0	0.0
Horry	<5	-	5	3.6	7	6.2
Jasper	<5	-	<5	-	<5	-
Kershaw	<5	-	<5	-	0	0.0
Lancaster	<5	-	<5	-	0	0.0
Laurens	0	0.0	<5	-	<5	-
Lee	0	0.0	0	0.0	<5	-
Lexington	<5	-	6	5.4	5	5.2
McCormick	0	0.0	0	0.0	0	0.0
Marion	0	0.0	0	0.0	0	0.0
Marlboro	0	0.0	0	0.0	0	0.0
Newberry	<5	-	<5	-	0	0.0
Oconee	0	0.0	0	0.0	<5	-
Orangeburg	0	0.0	0	0.0	<5	-
Pickens	0	0.0	0	0.0	<5	-
Richland	0	0.0	6	5.2	10	10.1
Saluda	<5	-	<5	-	<5	-
Spartanburg	<5	-	7	5.6	<5	-
Sumter	0	0.0	<5	-	<5	-
Union	0	0.0	0	0.0	0	0.0
Williamsburg	0	0.0	0	0.0	0	0.0
York	<5	-	<5	-	<5	-

¹Race/Ethnicity of mother

²Rates per 1,000 live births. Rates calculated with 20 or fewer deaths are unreliable and should be used cautiously.

Table 5.

Infant, Neonatal and Postneonatal Mortality Rates¹ by Race and Hispanic Origin of Mother
and Percent Change from 2020 to 2021
South Carolina
(Residence Data)

Infant Mortality					
Year	Total	Non-Hispanic White	Non-Hispanic Black	Non-Hispanic Other	Hispanic
2020	6.5	4.5	10.8	6.2	5.2
2021	7.3	5.2	12.7	2.3	5.1
Percent Change	12.3%	15.6%	17.6%	-62.9%	-1.9%

Neonatal Mortality					
Year	Total	Non-Hispanic White	Non-Hispanic Black	Non-Hispanic Other	Hispanic
2020	4.4	3.2	7.2	4.3	3.1
2021	4.7	3.3	8.0	1.7	3.9
Percent Change	6.8%	3.1%	11.1%	-60.5%	25.8%

Postneonatal Mortality					
Year	Total	Non-Hispanic White	Non-Hispanic Black	Non-Hispanic Other	Hispanic
2020	2.1	1.2	3.7	1.9	2.1
2021	2.6	1.9	4.7	0.6	1.1
Percent Change	23.8%	58.3%	27.0%	-68.4%	-47.6%

¹Rates per 1,000 live births

Table 6.

Neonatal Mortality and Neonatal Mortality Rates¹
 South Carolina and Each County, 2021, 2019-2021 2016-2018 (Residence Data)

County of Residence	2021		2019-2021		2016-2018	
	Number	Rate	Number	Rate	Number	Rate
South Carolina	269	4.7	772	4.5	764	4.5
Abbeville	<5	-	8	11.5	<5	-
Aiken	<5	-	21	3.7	30	5.2
Allendale	0	0.0	<5	-	<5	-
Anderson	13	5.7	32	4.8	30	4.4
Bamberg	<5	-	<5	-	5	12.9
Barnwell	<5	-	<5	-	<5	-
Beaufort	7	3.7	19	3.4	17	2.9
Berkeley	9	3.1	32	3.8	23	2.8
Calhoun	0	0.0	<5	-	5	12.4
Charleston	34	6.8	74	5.0	41	2.8
Cherokee	<5	-	12	6.2	8	4.0
Chester	<5	-	7	6.6	5	4.6
Chesterfield	<5	-	8	5.6	9	6.0
Clarendon	<5	-	6	6.6	<5	-
Colleton	<5	-	9	6.6	6	4.4
Darlington	<5	-	13	5.8	8	3.5
Dillon	<5	-	5	4.2	10	8.2
Dorchester	9	4.6	27	4.7	19	3.5
Edgefield	<5	-	<5	-	<5	-
Fairfield	<5	-	<5	-	<5	-
Florence	10	6.2	43	8.9	36	7.2
Georgetown	<5	-	<5	-	8	4.9
Greenville	24	3.6	62	3.2	83	4.4
Greenwood	<5	-	11	4.6	16	6.6
Hampton	<5	-	6	10.2	<5	-
Horry	12	3.7	42	4.4	47	5.0
Jasper	<5	-	6	5.4	8	7.4
Kershaw	<5	-	8	3.7	12	5.3
Lancaster	0	0.0	9	2.9	13	4.2
Laurens	<5	-	7	3.2	13	5.5
Lee	<5	-	<5	-	5	9.3
Lexington	17	5.0	38	3.9	35	3.6
McCormick	<5	-	<5	-	<5	-
Marion	<5	-	10	10.2	9	8.4
Marlboro	<5	-	<5	-	8	9.5
Newberry	<5	-	11	8.9	<5	-
Oconee	<5	-	12	6.1	8	3.7
Orangeburg	13	15.9	30	11.5	25	8.5
Pickens	<5	-	15	4.2	13	3.7
Richland	21	4.6	60	4.3	82	5.8
Saluda	<5	-	<5	-	<5	-
Spartanburg	18	4.6	46	3.9	33	2.9
Sumter	7	5.2	21	5.1	22	5.4
Union	<5	-	5	6.2	<5	-
Williamsburg	0	0.0	<5	-	7	7.5
York	13	4.2	30	3.4	32	3.6

¹Rates per 1,000 live births. Rates calculated with 20 or fewer deaths are unreliable and should be used cautiously.

Table 6-A.

Non-Hispanic White¹ Neonatal Mortality and Neonatal Mortality Rates²
 South Carolina and Each County, 2021, 2019-2021, 2016-2018
 (Residence Data)

County of Residence	2021		2019-2021		2016-2018	
	Number	Rate	Number	Rate	Number	Rate
South Carolina	108	3.3	301	3.1	317	3.2
Abbeville	<5	-	<5	-	<5	-
Aiken	<5	-	5	1.5	15	4.2
Allendale	0	0.0	0	0.0	0	0.0
Anderson	5	2.9	17	3.5	19	3.7
Bamberg	0	0.0	0	0.0	0	0.0
Barnwell	<5	-	<5	-	<5	-
Beaufort	<5	-	7	2.3	5	1.6
Berkeley	<5	-	10	2.0	8	1.6
Calhoun	0	0.0	0	0.0	<5	-
Charleston	19	6.3	32	3.6	14	1.6
Cherokee	0	0.0	7	5.4	5	3.7
Chester	<5	-	<5	-	<5	-
Chesterfield	0	0.0	<5	-	<5	-
Clarendon	<5	-	<5	-	0	0.0
Colleton	0	0.0	<5	-	<5	-
Darlington	<5	-	8	7.6	<5	-
Dillon	0	0.0	<5	-	<5	-
Dorchester	5	4.5	9	2.8	7	2.1
Edgefield	<5	-	<5	-	0	0.0
Fairfield	0	0.0	<5	-	0	0.0
Florence	<5	-	11	5.2	12	5.6
Georgetown	<5	-	<5	-	5	5.8
Greenville	13	3.2	27	2.3	38	3.2
Greenwood	<5	-	<5	-	<5	-
Hampton	<5	-	<5	-	<5	-
Horry	<5	-	19	3.1	25	4.0
Jasper	0	0.0	<5	-	<5	-
Kershaw	0	0.0	<5	-	7	4.8
Lancaster	0	0.0	5	2.4	8	3.8
Laurens	<5	-	<5	-	6	4.0
Lee	0	0.0	0	0.0	0	0.0
Lexington	11	5.0	23	3.6	18	2.7
McCormick	0	0.0	0	0.0	0	0.0
Marion	<5	-	<5	-	<5	-
Marlboro	0	0.0	<5	-	<5	-
Newberry	<5	-	<5	-	0	0.0
Oconee	<5	-	11	6.8	7	3.9
Orangeburg	<5	-	<5	-	<5	-
Pickens	<5	-	14	4.6	11	3.7
Richland	<5	-	8	1.7	19	3.8
Saluda	0	0.0	<5	-	<5	-
Spartanburg	8	3.2	25	3.3	22	3.0
Sumter	<5	-	12	7.1	9	5.1
Union	<5	-	<5	-	<5	-
Williamsburg	0	0.0	0	0.0	<5	-
York	<5	-	10	1.8	17	2.9

¹Race/Ethnicity of mother²Rates per 1,000 live births. Rates calculated with 20 or fewer deaths are unreliable and should be used cautiously.

Table 6-B.

Non-Hispanic Black¹ Neonatal Mortality and Neonatal Mortality Rates²
 South Carolina and Each County, 2021, 2019-2021, 2016-2018
 (Residence Data)

County of Residence	2021		2019-2021		2016-2018	
	Number	Rate	Number	Rate	Number	Rate
South Carolina	134	8.0	394	7.7	374	7.2
Abbeville	<5	-	6	31.9	<5	-
Aiken	<5	-	16	9.4	12	7.1
Allendale	0	0.0	<5	-	<5	-
Anderson	8	20.2	15	11.9	10	8.0
Bamberg	<5	-	<5	-	5	22.1
Barnwell	0	0.0	<5	-	<5	-
Beaufort	5	12.6	10	8.1	10	7.6
Berkeley	<5	-	16	7.5	10	5.1
Calhoun	0	0.0	<5	-	<5	-
Charleston	13	10.7	34	8.7	25	6.1
Cherokee	<5	-	5	9.9	<5	-
Chester	0	0.0	<5	-	<5	-
Chesterfield	<5	-	5	9.1	5	9.3
Clarendon	<5	-	<5	-	<5	-
Colleton	<5	-	7	13.4	<5	-
Darlington	<5	-	5	4.4	5	4.5
Dillon	<5	-	<5	-	5	7.8
Dorchester	<5	-	14	8.6	10	6.7
Edgefield	0	0.0	0	0.0	<5	-
Fairfield	<5	-	<5	-	<5	-
Florence	7	9.3	29	12.2	21	8.3
Georgetown	0	0.0	0	0.0	<5	-
Greenville	6	4.8	22	5.8	31	8.2
Greenwood	<5	-	6	6.5	10	10.9
Hampton	<5	-	<5	-	<5	-
Horry	7	12.0	19	11.0	14	7.9
Jasper	<5	-	<5	-	<5	-
Kershaw	0	0.0	<5	-	5	8.3
Lancaster	0	0.0	<5	-	5	7.1
Laurens	<5	-	<5	-	6	9.1
Lee	<5	-	<5	-	<5	-
Lexington	5	7.1	11	5.7	14	8.1
McCormick	<5	-	<5	-	<5	-
Marion	<5	-	8	12.1	7	10.1
Marlboro	<5	-	<5	-	<5	-
Newberry	<5	-	8	17.2	<5	-
Oconee	0	0.0	0	0.0	0	0.0
Orangeburg	12	23.3	28	16.4	21	11.0
Pickens	0	0.0	<5	-	<5	-
Richland	17	6.6	47	6.1	53	6.9
Saluda	0	0.0	<5	-	0	0.0
Spartanburg	7	8.4	14	5.5	10	4.0
Sumter	<5	-	8	3.7	12	5.9
Union	<5	-	<5	-	<5	-
Williamsburg	0	0.0	<5	-	5	7.8
York	7	10.2	16	7.7	13	6.5

¹Race/Ethnicity of mother

²Rates per 1,000 live births. Rates calculated with 20 or fewer deaths are unreliable and should be used cautiously.

Table 6-C.

Non-Hispanic Other¹ Neonatal Mortality and Neonatal Mortality Rates²
 South Carolina and Each County, 2021, 2019-2021, 2016-2018
 (Residence Data)

County of Residence	2021		2019-2021		2016-2018	
	Number	Rate	Number	Rate	Number	Rate
South Carolina	<5	-	16	3.2	14	2.8
Abbeville	0	0.0	0	0.0	0	0.0
Aiken	0	0.0	0	0.0	<5	-
Allendale	0	0.0	0	0.0	0	0.0
Anderson	0	0.0	0	0.0	0	0.0
Bamberg	0	0.0	0	0.0	0	0.0
Barnwell	0	0.0	0	0.0	0	0.0
Beaufort	0	0.0	0	0.0	0	0.0
Berkeley	<5	-	<5	-	0	0.0
Calhoun	0	0.0	0	0.0	0	0.0
Charleston	0	0.0	<5	-	0	0.0
Cherokee	0	0.0	0	0.0	0	0.0
Chester	0	0.0	0	0.0	0	0.0
Chesterfield	0	0.0	<5	-	0	0.0
Clarendon	0	0.0	0	0.0	0	0.0
Colleton	0	0.0	0	0.0	0	0.0
Darlington	0	0.0	0	0.0	0	0.0
Dillon	0	0.0	<5	-	<5	-
Dorchester	0	0.0	<5	-	<5	-
Edgefield	0	0.0	0	0.0	0	0.0
Fairfield	0	0.0	0	0.0	0	0.0
Florence	0	0.0	0	0.0	<5	-
Georgetown	0	0.0	0	0.0	0	0.0
Greenville	0	0.0	<5	-	<5	-
Greenwood	0	0.0	0	0.0	0	0.0
Hampton	0	0.0	0	0.0	0	0.0
Horry	0	0.0	0	0.0	<5	-
Jasper	0	0.0	0	0.0	<5	-
Kershaw	0	0.0	0	0.0	0	0.0
Lancaster	0	0.0	0	0.0	0	0.0
Laurens	0	0.0	0	0.0	0	0.0
Lee	0	0.0	0	0.0	0	0.0
Lexington	0	0.0	<5	-	0	0.0
McCormick	0	0.0	0	0.0	0	0.0
Marion	0	0.0	0	0.0	0	0.0
Marlboro	0	0.0	0	0.0	0	0.0
Newberry	0	0.0	0	0.0	0	0.0
Oconee	0	0.0	<5	-	0	0.0
Orangeburg	0	0.0	0	0.0	0	0.0
Pickens	0	0.0	0	0.0	0	0.0
Richland	<5	-	<5	-	<5	-
Saluda	0	0.0	0	0.0	0	0.0
Spartanburg	<5	-	<5	-	<5	-
Sumter	0	0.0	0	0.0	0	0.0
Union	0	0.0	0	0.0	0	0.0
Williamsburg	0	0.0	0	0.0	<5	-
York	0	0.0	<5	-	<5	-

¹Race/Ethnicity of mother

²Rates per 1,000 live births. Rates calculated with 20 or fewer deaths are unreliable and should be used cautiously.

Table 6-D.

Hispanic¹ Neonatal Mortality and Neonatal Mortality Rates²
 South Carolina and Each County, 2021, 2019-2021, 2016-2018
 (Residence Data)

County of Residence	2021		2019-2021		2016-2018	
	Number	Rate	Number	Rate	Number	Rate
South Carolina	24	3.9	61	3.5	59	3.9
Abbeville	0	0.0	0	0.0	0	0.0
Aiken	0	0.0	0	0.0	<5	-
Allendale	0	0.0	0	0.0	0	0.0
Anderson	0	0.0	0	0.0	<5	-
Bamberg	0	0.0	0	0.0	0	0.0
Barnwell	0	0.0	0	0.0	0	0.0
Beaufort	<5	-	<5	-	<5	-
Berkeley	<5	-	<5	-	5	5.2
Calhoun	0	0.0	0	0.0	0	0.0
Charleston	<5	-	6	3.3	<5	-
Cherokee	0	0.0	0	0.0	0	0.0
Chester	0	0.0	0	0.0	0	0.0
Chesterfield	0	0.0	0	0.0	0	0.0
Clarendon	0	0.0	<5	-	<5	-
Colleton	<5	-	<5	-	0	0.0
Darlington	0	0.0	0	0.0	0	0.0
Dillon	0	0.0	0	0.0	0	0.0
Dorchester	0	0.0	<5	-	<5	-
Edgefield	0	0.0	0	0.0	0	0.0
Fairfield	0	0.0	0	0.0	0	0.0
Florence	<5	-	<5	-	<5	-
Georgetown	0	0.0	0	0.0	<5	-
Greenville	5	4.4	12	3.8	13	4.8
Greenwood	0	0.0	<5	-	<5	-
Hampton	0	0.0	0	0.0	0	0.0
Horry	<5	-	<5	-	6	5.3
Jasper	<5	-	<5	-	<5	-
Kershaw	<5	-	<5	-	0	0.0
Lancaster	0	0.0	<5	-	0	0.0
Laurens	0	0.0	<5	-	<5	-
Lee	0	0.0	0	0.0	<5	-
Lexington	<5	-	<5	-	<5	-
McCormick	0	0.0	0	0.0	0	0.0
Marion	0	0.0	0	0.0	0	0.0
Marlboro	0	0.0	0	0.0	0	0.0
Newberry	<5	-	<5	-	0	0.0
Oconee	0	0.0	0	0.0	<5	-
Orangeburg	0	0.0	0	0.0	<5	-
Pickens	0	0.0	0	0.0	<5	-
Richland	0	0.0	<5	-	7	7.0
Saluda	<5	-	<5	-	<5	-
Spartanburg	<5	-	6	4.8	0	0.0
Sumter	0	0.0	<5	-	<5	-
Union	0	0.0	0	0.0	0	0.0
Williamsburg	0	0.0	0	0.0	0	0.0
York	<5	-	<5	-	<5	-

¹Race/Ethnicity of mother

²Rates per 1,000 live births. Rates calculated with 20 or fewer deaths are unreliable and should be used cautiously.

Table 7.
Postneonatal Mortality and Postneonatal Mortality Rates¹
South Carolina and Each County, 2021, 2019-2021, 2016-2018
(Residence Data)

County of Residence	2021		2019-2021		2016-2018	
	Number	Rate	Number	Rate	Number	Rate
South Carolina	147	2.6	399	2.3	414	2.4
Abbeville	0	0.0	0	0.0	<5	-
Aiken	6	3.1	16	2.8	17	3.0
Allendale	<5	-	<5	-	0	0.0
Anderson	7	3.0	14	2.1	14	2.0
Bamberg	0	0.0	0	0.0	0	0.0
Barnwell	0	0.0	5	6.3	5	6.9
Beaufort	7	3.7	15	2.7	7	1.2
Berkeley	7	2.4	12	1.4	16	1.9
Calhoun	<5	-	<5	-	<5	-
Charleston	<5	-	25	1.7	34	2.3
Cherokee	<5	-	<5	-	<5	-
Chester	<5	-	5	4.7	7	6.5
Chesterfield	<5	-	<5	-	9	6.0
Clarendon	<5	-	5	5.5	5	5.3
Colleton	<5	-	5	3.7	<5	-
Darlington	<5	-	6	2.7	10	4.4
Dillon	5	12.9	7	5.8	<5	-
Dorchester	<5	-	7	1.2	16	2.9
Edgefield	0	0.0	<5	-	<5	-
Fairfield	<5	-	<5	-	<5	-
Florence	6	3.7	18	3.7	16	3.2
Georgetown	<5	-	7	4.7	<5	-
Greenville	15	2.3	40	2.1	40	2.1
Greenwood	<5	-	6	2.5	10	4.1
Hampton	<5	-	6	10.2	<5	-
Horry	<5	-	18	1.9	19	2.0
Jasper	0	0.0	<5	-	<5	-
Kershaw	<5	-	5	2.3	<5	-
Lancaster	<5	-	10	3.2	7	2.3
Laurens	<5	-	7	3.2	5	2.1
Lee	<5	-	<5	-	<5	-
Lexington	<5	-	16	1.6	27	2.8
McCormick	0	0.0	0	0.0	0	0.0
Marion	<5	-	<5	-	<5	-
Marlboro	0	0.0	<5	-	5	6.0
Newberry	<5	-	5	4.1	7	5.6
Oconee	<5	-	5	2.5	10	4.6
Orangeburg	<5	-	6	2.3	<5	-
Pickens	<5	-	5	1.4	6	1.7
Richland	13	2.8	34	2.4	34	2.4
Saluda	0	0.0	<5	-	0	0.0
Spartanburg	7	1.8	23	2.0	28	2.5
Sumter	6	4.5	15	3.6	5	1.2
Union	<5	-	<5	-	<5	-
Williamsburg	<5	-	<5	-	<5	-
York	6	2.0	16	1.8	17	1.9

¹Rates per 1,000 live births. Rates calculated with 20 or fewer deaths are unreliable and should be used cautiously.

Table 7-A.

Non-Hispanic White¹ Postneonatal Mortality and Postneonatal Mortality Rates²
 South Carolina and Each County, 2021, 2019-2021, 2016-2018
 (Residence Data)

County of Residence	2021		2019-2021		2016-2018	
	Number	Rate	Number	Rate	Number	Rate
South Carolina	61	1.9	154	1.6	207	2.1
Abbeville	0	0.0	0	0.0	0	0.0
Aiken	<5	-	6	1.8	9	2.5
Allendale	0	0.0	0	0.0	0	0.0
Anderson	<5	-	9	1.9	11	2.1
Bamberg	0	0.0	0	0.0	0	0.0
Barnwell	0	0.0	<5	-	<5	-
Beaufort	<5	-	5	1.7	<5	-
Berkeley	5	3.0	8	1.6	10	2.0
Calhoun	0	0.0	0	0.0	<5	-
Charleston	<5	-	6	0.7	11	1.3
Cherokee	0	0.0	<5	-	<5	-
Chester	<5	-	<5	-	5	8.6
Chesterfield	<5	-	<5	-	5	5.7
Clarendon	0	0.0	<5	-	<5	-
Colleton	<5	-	<5	-	<5	-
Darlington	<5	-	<5	-	<5	-
Dillon	<5	-	<5	-	0	0.0
Dorchester	<5	-	<5	-	11	3.3
Edgefield	0	0.0	0	0.0	0	0.0
Fairfield	0	0.0	0	0.0	<5	-
Florence	<5	-	7	3.3	<5	-
Georgetown	<5	-	<5	-	<5	-
Greenville	9	2.2	16	1.4	20	1.7
Greenwood	0	0.0	0	0.0	<5	-
Hampton	0	0.0	<5	-	0	0.0
Horry	<5	-	10	1.6	10	1.6
Jasper	0	0.0	<5	-	<5	-
Kershaw	<5	-	<5	-	<5	-
Lancaster	<5	-	6	2.8	<5	-
Laurens	<5	-	<5	-	<5	-
Lee	0	0.0	0	0.0	<5	-
Lexington	<5	-	7	1.1	19	2.8
McCormick	0	0.0	0	0.0	0	0.0
Marion	0	0.0	0	0.0	0	0.0
Marlboro	0	0.0	0	0.0	<5	-
Newberry	<5	-	<5	-	<5	-
Oconee	<5	-	5	3.1	9	5.1
Orangeburg	<5	-	<5	-	<5	-
Pickens	<5	-	<5	-	5	1.7
Richland	<5	-	5	1.1	9	1.8
Saluda	0	0.0	<5	-	0	0.0
Spartanburg	<5	-	12	1.6	17	2.3
Sumter	<5	-	5	3.0	0	0.0
Union	0	0.0	<5	-	0	0.0
Williamsburg	0	0.0	0	0.0	0	0.0
York	<5	-	5	0.9	11	1.9

¹Race/ethnicity of mother²Rates per 1,000 live births. Rates calculated with 20 or fewer deaths are unreliable and should be used cautiously.

Table 7-B.

Non-Hispanic Black¹ Postneonatal Mortality and Postneonatal Mortality Rates²
 South Carolina and Each County, 2021, 2019-2021, 2016-2018
 (Residence Data)

County of Residence	2021		2019-2021		2016-2018	
	Number	Rate	Number	Rate	Number	Rate
South Carolina	78	4.7	208	4.1	168	3.2
Abbeville	0	0.0	0	0.0	<5	-
Aiken	5	8.4	8	4.7	7	4.2
Allendale	<5	-	<5	-	0	0.0
Anderson	<5	-	<5	-	<5	-
Bamberg	0	0.0	0	0.0	0	0.0
Barnwell	0	0.0	<5	-	<5	-
Beaufort	<5	-	9	7.3	<5	-
Berkeley	<5	-	<5	-	<5	-
Calhoun	<5	-	<5	-	<5	-
Charleston	<5	-	17	4.4	20	4.8
Cherokee	<5	-	<5	-	0	0.0
Chester	0	0.0	<5	-	<5	-
Chesterfield	<5	-	<5	-	<5	-
Clarendon	<5	-	<5	-	<5	-
Colleton	0	0.0	<5	-	<5	-
Darlington	<5	-	<5	-	5	4.5
Dillon	<5	-	<5	-	<5	-
Dorchester	<5	-	<5	-	<5	-
Edgefield	0	0.0	<5	-	<5	-
Fairfield	<5	-	<5	-	<5	-
Florence	<5	-	10	4.2	12	4.7
Georgetown	<5	-	<5	-	<5	-
Greenville	<5	-	19	5.0	16	4.2
Greenwood	<5	-	6	6.5	6	6.6
Hampton	<5	-	5	16.0	<5	-
Horry	<5	-	7	4.0	8	4.5
Jasper	0	0.0	<5	-	<5	-
Kershaw	<5	-	<5	-	0	0.0
Lancaster	0	0.0	<5	-	<5	-
Laurens	<5	-	5	8.5	<5	-
Lee	<5	-	<5	-	0	0.0
Lexington	<5	-	6	3.1	<5	-
McCormick	0	0.0	0	0.0	0	0.0
Marion	<5	-	<5	-	<5	-
Marlboro	0	0.0	<5	-	<5	-
Newberry	<5	-	<5	-	<5	-
Oconee	0	0.0	0	0.0	<5	-
Orangeburg	<5	-	5	2.9	<5	-
Pickens	<5	-	<5	-	0	0.0
Richland	9	3.5	23	3.0	21	2.7
Saluda	0	0.0	0	0.0	0	0.0
Spartanburg	<5	-	10	3.9	7	2.8
Sumter	5	7.2	10	4.7	5	2.5
Union	<5	-	<5	-	<5	-
Williamsburg	<5	-	<5	-	<5	-
York	<5	-	8	3.8	5	2.5

¹Race/ethnicity of mother²Rates per 1,000 live births. Rates calculated with 20 or fewer deaths are unreliable and should be used cautiously.

Table 7-C.

Non-Hispanic Other¹ Postneonatal Mortality and Postneonatal Mortality Rates²
 South Carolina and Each County, 2021, 2019-2021, 2016-2018
 (Residence Data)

County of Residence	2021		2019-2021		2016-2018	
	Number	Rate	Number	Rate	Number	Rate
South Carolina	<5	-	8	1.6	12	2.4
Abbeville	0	0.0	0	0.0	0	0.0
Aiken	0	0.0	<5	-	0	0.0
Allendale	0	0.0	0	0.0	0	0.0
Anderson	0	0.0	0	0.0	0	0.0
Bamberg	0	0.0	0	0.0	0	0.0
Barnwell	0	0.0	0	0.0	0	0.0
Beaufort	0	0.0	0	0.0	0	0.0
Berkeley	0	0.0	<5	-	<5	-
Calhoun	0	0.0	0	0.0	0	0.0
Charleston	0	0.0	0	0.0	<5	-
Cherokee	0	0.0	0	0.0	0	0.0
Chester	0	0.0	0	0.0	0	0.0
Chesterfield	0	0.0	0	0.0	0	0.0
Clarendon	0	0.0	0	0.0	0	0.0
Colleton	0	0.0	0	0.0	<5	-
Darlington	0	0.0	0	0.0	<5	-
Dillon	0	0.0	<5	-	0	0.0
Dorchester	0	0.0	0	0.0	<5	-
Edgefield	0	0.0	0	0.0	0	0.0
Fairfield	0	0.0	0	0.0	0	0.0
Florence	0	0.0	0	0.0	0	0.0
Georgetown	0	0.0	0	0.0	0	0.0
Greenville	0	0.0	0	0.0	<5	-
Greenwood	0	0.0	0	0.0	0	0.0
Hampton	0	0.0	0	0.0	0	0.0
Horry	0	0.0	0	0.0	0	0.0
Jasper	0	0.0	0	0.0	0	0.0
Kershaw	0	0.0	0	0.0	0	0.0
Lancaster	0	0.0	0	0.0	0	0.0
Laurens	0	0.0	0	0.0	0	0.0
Lee	0	0.0	0	0.0	0	0.0
Lexington	0	0.0	0	0.0	<5	-
McCormick	0	0.0	0	0.0	0	0.0
Marion	0	0.0	0	0.0	0	0.0
Marlboro	0	0.0	0	0.0	<5	-
Newberry	0	0.0	0	0.0	0	0.0
Oconee	0	0.0	0	0.0	0	0.0
Orangeburg	0	0.0	0	0.0	0	0.0
Pickens	0	0.0	0	0.0	0	0.0
Richland	0	0.0	<5	-	<5	-
Saluda	0	0.0	0	0.0	0	0.0
Spartanburg	0	0.0	0	0.0	<5	-
Sumter	0	0.0	0	0.0	0	0.0
Union	0	0.0	0	0.0	0	0.0
Williamsburg	0	0.0	0	0.0	0	0.0
York	<5	-	<5	-	<5	-

¹Race of mother

²Rates per 1,000 live births. Rates calculated with 20 or fewer deaths are unreliable and should be used cautiously.

Table 7-D.

Hispanic¹ Postneonatal Mortality and Postneonatal Mortality Rates²
 South Carolina and Each County, 2021, 2019-2021, 2016-2018
 (Residence Data)

County of Residence	2021		2019-2021		2016-2018	
	Number	Rate	Number	Rate	Number	Rate
South Carolina	7	1.1	29	1.7	27	1.8
Abbeville	0	0.0	0	0.0	0	0.0
Aiken	0	0.0	0	0.0	<5	-
Allendale	0	0.0	0	0.0	0	0.0
Anderson	<5	-	<5	-	<5	-
Bamberg	0	0.0	0	0.0	0	0.0
Barnwell	0	0.0	0	0.0	0	0.0
Beaufort	<5	-	<5	-	0	0.0
Berkeley	0	0.0	0	0.0	<5	-
Calhoun	0	0.0	0	0.0	0	0.0
Charleston	0	0.0	<5	-	<5	-
Cherokee	0	0.0	0	0.0	0	0.0
Chester	0	0.0	0	0.0	0	0.0
Chesterfield	0	0.0	0	0.0	0	0.0
Clarendon	0	0.0	0	0.0	<5	-
Colleton	0	0.0	0	0.0	0	0.0
Darlington	0	0.0	0	0.0	0	0.0
Dillon	0	0.0	0	0.0	<5	-
Dorchester	0	0.0	0	0.0	0	0.0
Edgefield	0	0.0	0	0.0	0	0.0
Fairfield	0	0.0	0	0.0	0	0.0
Florence	0	0.0	<5	-	<5	-
Georgetown	0	0.0	<5	-	0	0.0
Greenville	<5	-	5	1.6	<5	-
Greenwood	0	0.0	0	0.0	<5	-
Hampton	0	0.0	0	0.0	0	0.0
Horry	0	0.0	<5	-	<5	-
Jasper	0	0.0	0	0.0	<5	-
Kershaw	0	0.0	0	0.0	0	0.0
Lancaster	<5	-	<5	-	0	0.0
Laurens	0	0.0	<5	-	0	0.0
Lee	0	0.0	0	0.0	0	0.0
Lexington	<5	-	<5	-	<5	-
McCormick	0	0.0	0	0.0	0	0.0
Marion	0	0.0	0	0.0	0	0.0
Marlboro	0	0.0	0	0.0	0	0.0
Newberry	0	0.0	<5	-	0	0.0
Oconee	0	0.0	0	0.0	0	0.0
Orangeburg	0	0.0	0	0.0	0	0.0
Pickens	0	0.0	0	0.0	<5	-
Richland	0	0.0	<5	-	<5	-
Saluda	0	0.0	<5	-	0	0.0
Spartanburg	0	0.0	<5	-	<5	-
Sumter	0	0.0	0	0.0	0	0.0
Union	0	0.0	0	0.0	0	0.0
Williamsburg	0	0.0	0	0.0	0	0.0
York	<5	-	<5	-	0	0.0

¹Race/Ethnicity of mother

²Rates per 1,000 live births. Rates calculated with 20 or fewer deaths are unreliable and should be used cautiously.

Table 8.
Leading Causes of Infant Death by Age at Death
South Carolina, 2021
(Residence Data)

Cause of Infant Death (ICD-10 Codes)	Total	Under 1 Day	1-6 Days	7-27 Days	Neonatal (<28 days)	Post-Neonatal (28-364 days)
TOTAL INFANT DEATHS	416	135	66	68	269	147
CONGENITAL MALFORMATIONS, ETC. (Q00-Q99)	77	23	21	13	57	20
DISORDERS RELATED TO SHORT GESTATION, ETC. (P07)	49	46	1	-	47	2
NEWBORN AFF BY MATERNAL COMP OF PREG (P01)	35	31	4	-	35	-
SUDDEN INFANT DEATH SYNDROME (R95)	27	-	-	3	3	24
ACCIDENTS (V01-X59,Y85-Y86)	26	-	1	-	1	25
BACTERIAL SEPSIS OF NEWBORN (P36)	21	5	4	12	21	-
NEWBORN AFF BY COMP OF PLACENTA, ETC. (P02)	14	10	1	2	13	1
INTRAUTERINE HYPOXIA AND BIRTH ASPHYXIA (P20-P21)	13	1	6	6	13	-
DZ OF CIRCULATORY SYSTEM (I00-I99)	9	-	-	-	-	9
ASSAULT (HOMICIDE) (X85-Y09,Y87.1)	9	1	-	-	1	8
RESPIRATORY DISTRESS OF NEWBORN (P22)	8	1	6	1	8	-
ATELECTASIS (P28.0-P28.1)	8	3	4	1	8	-
ALL OTHER CAUSES	120	14	18	30	62	58

Table 8-A.
Percent Change of Leading Causes of Infant Death
from 2020 to 2021, South Carolina

Cause of Infant Death Ranked by 2021 Data (ICD-10 Codes)	2020		2021		Change in percent distribution of deaths
	Number of deaths	Percent of deaths	Number of deaths	Percent of deaths	
TOTAL INFANT DEATHS	364	100.0	416	100.0	
CONGENITAL MALFORMATIONS, ETC. (Q00-Q99)	63	17.3	77	18.5	6.9
DISORDERS RELATED TO SHORT GESTATION, ETC. (P07)	52	14.3	49	11.8	-17.5
NEWBORN AFF BY MATERNAL COMP OF PREG (P01)	22	6.0	35	8.4	40.0
SUDDEN INFANT DEATH SYNDROME (R95)	12	3.3	27	6.5	97.0
ACCIDENTS (V01-X59,Y85-Y86)	28	7.7	26	6.3	-18.2
BACTERIAL SEPSIS OF NEWBORN (P36)	8	2.2	21	5.0	127.3
NEWBORN AFF BY COMP OF PLACENTA, ETC. (P02)	20	5.5	14	3.4	-38.2
INTRAUTERINE HYPOXIA AND BIRTH ASPHYXIA (P20-P21)	5	1.4	13	3.1	121.4
ASSAULT (HOMICIDE) (X85-Y09,Y87.1)*	-	-	9	2.2	-
DZ OF CIRCULATORY SYSTEM (I00-I99)	13	3.6	9	2.2	-38.9
ATELECTASIS (P28.0-P28.1)*	-	-	8	1.9	-
RESPIRATORY DISTRESS OF NEWBORN (P22)	8	2.2	8	1.9	-13.6
ALL OTHER CAUSES	106	29.1	120	28.8	-1.0

* Not on the top 10 infant deaths list in the previous year

Table 9.
 Breakdown of Infant Deaths due to Accidents
 South Carolina, 2015-2021
 (Residence Data)

	2015	2016	2017	2018	2019	2020	2021	Total (2015-2021)
Accidental suffocation and strangulation in bed (W75, W84)	35	33	30	34	27	24	25	208
Other accidental threats to breathing	1	3	1	2	0	0	1	8
Transportation	0	2	1	1	3	3	0	10
Drowning	0	0	0	0	2	1	0	3
Poison	0	0	0	0	0	0	0	0
Other accidents	2	1	2	1	0	0	0	6
Total	38	39	34	38	32	28	26	235

Table 10.
 Breakdown of Sudden Unexplained Infant Deaths
 South Carolina, 2015-2021
 (Residence Data)

	2015	2016	2017	2018	2019	2020	2021	Total (2015-2021)
Accidental suffocation and strangulation in bed (W75, W84)	35	33	30	34	27	24	25	208
Sudden Infant Death Syndrome (R95)	28	27	28	14	19	12	27	155
Hanging, strangulation, and suffocation, undetermined intent (Y20)	4	1	2	2	1	0	0	10
Other ill-defined and unspecified causes of mortality (R99)	11	10	10	21	25	14	30	121
Total	78	71	70	71	72	50	82	494

Table 11.
Leading Causes of Infant Death and Mortality Rates¹
South Carolina, 2019-2021
(Residence Data)

Table 11. South Carolina Infant Death, Resident Data, 2019-2021, All races

Rank	Cause of death	Number	Rate
	TOTAL INFANT DEATHS	1,171	6.9
1	CONGENITAL MALFORMATIONS, ETC. (Q00-Q99)	203	1.2
2	DISORDERS RELATED TO SHORT GESTATION, ETC. (P07)	169	1.0
3	NEWBORN AFF BY MATERNAL COMP OF PREG (P01)	90	0.5
4	ACCIDENTS (V01-X59, Y85-Y86)	86	0.5
5	SUDDEN INFANT DEATH SYNDROME (R95)	58	0.3
6	BACTERIAL SEPSIS OF NEWBORN (P36)	45	0.3
7	NEWBORN AFF BY COMP OF PLACENTA, ETC. (P02)	44	0.3
8	DZ OF CIRCULATORY SYSTEM (I00-I99)	27	0.2
9	INTRAUTERINE HYPOXIA AND BIRTH ASPHYXIA (P20-P21)	26	0.2
10	RESPIRATORY DISTRESS OF NEWBORN (P22)	22	0.1
	ALL OTHER CAUSES	401	2.4

¹Rates per 1,000 live births. Rates calculated with 20 or fewer deaths are unreliable and should be used cautiously.

Table 12.

Comparison of Characteristics for All Live Births, by Race and Hispanic Origin of Mother

Z-tests for differences in proportions¹
South Carolina, 2020 to 2021 (Residence Data)

	2020		2021		Z-TEST	P-VALUE
	Percent	Number	Percent	Number		

MOTHER < 18 YEARS						
TOTAL ²	1.41	784	1.38	787	-0.7407	0.4589
Non-Hispanic White	0.85	267	0.82	267	-0.4796	0.6315
Non-Hispanic Black	2.02	344	2.01	337	-0.0228	0.9818
Non-Hispanic Other	0.68	11	0.68	12	-0.0045	0.9964
Hispanic	2.79	162	2.79	171	0.0107	0.9914

MARITAL STATUS: UNMARRIED						
TOTAL ²	46.48	25,896	45.11	25,796	-4.6077	0.0000
Non-Hispanic White	29.99	9,366	28.82	9,382	-3.2289	0.0012
Non-Hispanic Black	77.20	13,163	76.80	12,851	-0.8680	0.3854
Non-Hispanic Other	21.31	344	20.69	365	-0.4434	0.6575
Hispanic	51.99	3,024	52.15	3,198	0.1730	0.8627

OBESE PRIOR TO PREGNANCY						
TOTAL ²	34.41	19,173	34.54	19,750	0.4481	0.6541
Non-Hispanic White	29.10	9,088	29.22	9,511	0.3369	0.7362
Non-Hispanic Black	46.99	8,012	47.49	7,947	0.9287	0.3530
Non-Hispanic Other	17.97	290	19.33	341	1.0155	0.3099
Hispanic	30.66	1,783	31.82	1,951	1.3671	0.1716

TOBACCO USE DURING PREGNANCY						
TOTAL ²	6.52	3,634	5.24	2,998	-9.1405	0.0000
Non-Hispanic White	8.80	2,749	6.86	2,234	-9.1197	0.0000
Non-Hispanic Black	4.40	750	3.80	636	-2.7692	0.0056
Non-Hispanic Other	2.42	39	2.04	36	-0.7400	0.4593
Hispanic	1.65	96	1.50	92	-0.6598	0.5094

VERY LOW BIRTHWEIGHT						
TOTAL ²	1.72	961	1.82	1,042	1.2398	0.2150
Non-Hispanic White	0.97	302	1.12	364	1.8794	0.0602
Non-Hispanic Black	3.35	571	3.45	577	0.5047	0.6138
Non-Hispanic Other	1.67	27	1.64	29	-0.0656	0.9477
Hispanic	1.05	61	1.17	72	0.6527	0.5140

¹Proportions are expressed as percentages²Includes unknown race/ethnicity

Source: SC DHEC, Vital Statistics

Table 12.

Comparison of Characteristics for All Live Births, by Race and Hispanic Origin of Mother

Z-tests for differences in proportions¹

South Carolina, 2020 to 2021 (Residence Data)

	2020		2021		Z-TEST	P-VALUE
	Percent	Number	Percent	Number		
LOW BIRTHWEIGHT						
TOTAL ²	9.84	5,480	10.02	5,730	1.0394	0.2986
Non-Hispanic White	7.28	2,273	7.48	2,435	0.9802	0.3270
Non-Hispanic Black	15.32	2,613	15.92	2,664	1.5087	0.1314
Non-Hispanic Other	9.67	156	9.30	164	-0.3652	0.7150
Hispanic	7.53	438	7.62	467	0.1752	0.8609

¹Proportions are expressed as percentages²Includes unknown race/ethnicity

Table 12. (continued)

Comparison of Characteristics for All Live Births, by Race and Hispanic Origin of Mother

Z-tests for differences in proportions¹

South Carolina, 2020 to 2021

(Residence Data)

	2020		2021		Z-TEST	P-VALUE
	Percent	Number	Percent	Number		
PREMATURE BIRTHS (< 37 WEEKS)						
TOTAL ²	11.81	6,582	11.83	6,766	0.0983	0.9217
Non-Hispanic White	10.12	3,161	10.23	3,330	0.4568	0.6478
Non-Hispanic Black	15.53	2,648	15.54	2,600	0.0210	0.9832
Non-Hispanic Other	9.79	158	10.66	188	0.8313	0.4058
Hispanic	10.57	615	10.57	648	-0.0120	0.9904
VERY PREMATURE BIRTHS (< 32 WEEKS)						
TOTAL ²	1.86	1,036	1.93	1,104	0.8777	0.3801
Non-Hispanic White	1.17	366	1.27	415	1.1834	0.2367
Non-Hispanic Black	3.31	565	3.42	572	0.5341	0.5933
Non-Hispanic Other	1.86	30	1.59	28	-0.6066	0.5441
Hispanic	1.29	75	1.45	89	0.7600	0.4472
PREMATURE 32-36 WEEKS BIRTHS						
TOTAL ²	9.95	5,546	9.90	5,662	-0.2941	0.7687
Non-Hispanic White	8.95	2,795	8.96	2,915	0.0279	0.9778
Non-Hispanic Black	12.22	2,083	12.12	2,028	-0.2713	0.7861
Non-Hispanic Other	7.93	128	9.07	160	1.1848	0.2361
Hispanic	9.28	540	9.12	559	-0.3188	0.7499
KOTELCHUCK INDEX: ADEQUATE, ADEQUATE PLUS						
TOTAL ²	77.96	43,435	74.34	42,506	-14.2783	0.0000
Non-Hispanic White	82.88	25,885	79.34	25,825	-11.4099	0.0000
Non-Hispanic Black	74.36	12,679	70.03	11,718	-8.8833	0.0000
Non-Hispanic Other	76.46	1,234	68.37	1,206	-5.2434	0.0000
Hispanic	62.53	3,637	61.27	3,757	-1.4237	0.1545
KOTELCHUCK INDEX: INADEQUATE						
TOTAL ²	16.61	9,254	15.13	8,652	-6.7995	0.0000
Non-Hispanic White	12.33	3,852	11.43	3,722	-3.5077	0.0005
Non-Hispanic Black	19.78	3,373	17.99	3,011	-4.1959	0.0000
Non-Hispanic Other	19.27	311	16.61	293	-2.0145	0.0440
Hispanic	29.54	1,718	26.52	1,626	-3.6784	0.0002
< 5 PRENATAL CARE VISITS						
TOTAL ²	5.65	3,146	4.00	2,287	-12.9271	0.0000
Non-Hispanic White	3.97	1,241	2.94	956	-7.1751	0.0000
Non-Hispanic Black	6.86	1,170	4.93	825	-7.5297	0.0000
Non-Hispanic Other	6.88	111	3.57	63	-4.3421	0.0000
Hispanic	10.73	624	7.22	443	-6.7141	0.0000

¹Proportions are expressed as percentages²Includes unknown race

Source: SC DHEC, Vital Statistics

Table 12. (continued)

Comparison of Characteristics for All Live Births, by Race and Hispanic Origin of Mother
 Z-tests for differences in proportions¹
 South Carolina, 2020 to 2021
 (Residence Data)

	2020		2021		Z-TEST	P-VALUE
	Percent	Number	Percent	Number		
PRENATAL CARE BEGAN FIRST TRIMESTER						
TOTAL ²	74.89	41,721	70.88	40,531	-15.1146	0.0000
Non-Hispanic White	80.45	25,125	76.17	24,793	-13.0927	0.0000
Non-Hispanic Black	70.31	11,988	66.43	11,116	-7.6590	0.0000
Non-Hispanic Other	72.18	1,165	63.66	1,123	-5.2901	0.0000
Hispanic	59.20	3,443	57.06	3,499	-2.3668	0.0179

¹Proportions are expressed as percentages

²Includes unknown race

Table 12-A.

Comparison of Characteristics of Infants who Died, by Race and Hispanic Origin of Mother
 Z-tests for differences in proportions¹
 South Carolina, 2020 to 2021
 (Residence Data)

	2020		2021		Z-TEST	P-VALUE
	Percent	Number	Percent	Number		
MOTHER < 18 YEARS						
TOTAL ²	1.65	6	2.16	9	0.5226	0.6013
Non-Hispanic White	1.44	2	2.37	4	0.5864	0.5576
Non-Hispanic Black	1.08	2	2.36	5	0.9647	0.3347
Non-Hispanic Other	0.00	0	0.00	0	-	-
Hispanic	6.67	2	0.00	0	-1.4618	0.1438
MARITAL STATUS: UNMARRIED						
TOTAL ²	64.29	234	60.10	250	-1.2029	0.2290
Non-Hispanic White	46.76	65	39.05	66	-1.3618	0.1733
Non-Hispanic Black	81.08	150	77.83	165	-0.7982	0.4248
Non-Hispanic Other	30.00	3	50.00	2	0.7055	0.4805
Hispanic	53.33	16	54.84	17	0.1180	0.9061
OBESE PRIOR TO PREGNANCY						
TOTAL ²	40.93	149	45.91	191	1.3991	0.1618
Non-Hispanic White	27.34	38	39.05	66	2.1634	0.0305
Non-Hispanic Black	51.89	96	51.89	110	-0.0010	0.9992
Non-Hispanic Other	40.00	4	0.00	0	-1.4967	0.1345
Hispanic	36.67	11	48.39	15	0.9254	0.3548
TOBACCO USE DURING PREGNANCY						
TOTAL ²	9.34	34	5.05	21	-2.3362	0.0195
Non-Hispanic White	15.83	22	9.47	16	-1.6889	0.0912
Non-Hispanic Black	6.49	12	2.36	5	-2.0266	0.0427
Non-Hispanic Other	0.00	0	0.00	0	-	-
Hispanic	0.00	0	0.00	0	-	-
VERY LOW BIRTHWEIGHT						
TOTAL ²	56.04	204	47.60	198	-2.3552	0.0185
Non-Hispanic White	49.64	69	36.69	62	-2.2883	0.0221
Non-Hispanic Black	63.24	117	54.72	116	-1.7211	0.0852
Non-Hispanic Other	50.00	5	50.00	2	0.0000	1.0000
Hispanic	43.33	13	58.06	18	1.1505	0.2499
LOW BIRTHWEIGHT						
TOTAL ²	68.13	248	65.87	274	-0.1968	0.8440
Non-Hispanic White	59.71	83	57.40	97	-0.4983	0.6183
Non-Hispanic Black	75.68	140	71.23	151	0.2376	0.8122
Non-Hispanic Other	60.00	6	75.00	3	0.4495	0.6531
Hispanic	63.33	19	74.19	23	-0.1752	0.8610

¹Proportions are expressed as percentages

²Includes unknown race

Table 12-A. (continued)

Comparison of Characteristics of Infants who Died, by Race and Hispanic Origin of Mother

Z-tests for differences in proportions¹

South Carolina, 2020 to 2021

(Residence Data)

	2020		2021		Z-TEST	P-VALUE
	Percent	Number	Percent	Number		

PREMATURE BIRTHS (< 37 WEEKS)						
TOTAL ²	69.23	252	67.07	279	-0.6466	0.5179
Non-Hispanic White	66.19	92	63.31	107	-0.5248	0.5997
Non-Hispanic Black	72.97	135	67.92	144	-1.0979	0.2722
Non-Hispanic Other	60.00	6	100.00	4	1.4967	0.1345
Hispanic	30.00	9	77.42	24	3.7156	0.0002

VERY PREMATURE BIRTHS (< 32 WEEKS)						
TOTAL ²	55.49	202	48.56	202	-1.9343	0.0531
Non-Hispanic White	48.20	67	39.64	67	-1.5073	0.1317
Non-Hispanic Black	62.70	116	54.25	115	-1.7042	0.0883
Non-Hispanic Other	50.00	5	50.00	2	0.0000	1.0000
Hispanic	46.67	14	58.06	18	0.8912	0.3728

PREMATURE 32-36 WEEKS BIRTHS						
TOTAL ²	13.74	50	18.51	77	1.8014	0.0716
Non-Hispanic White	17.99	25	23.67	40	1.2163	0.2239
Non-Hispanic Black	10.27	19	13.68	29	1.0393	0.2987
Non-Hispanic Other	10.00	1	50.00	2	1.6478	0.0994
Hispanic	16.67	5	19.35	6	0.2730	0.7848

KOTELCHUCK INDEX: ADEQUATE, ADEQUATE PLUS						
TOTAL ²	63.19	230	58.65	244	-1.2935	0.1958
Non-Hispanic White	60.43	84	60.95	103	0.0921	0.9266
Non-Hispanic Black	65.95	122	58.49	124	-1.5264	0.1269
Non-Hispanic Other	60.00	6	50.00	2	-0.3416	0.7327
Hispanic	60.00	18	48.39	15	-0.9099	0.3629

KOTELCHUCK INDEX: INADEQUATE						
TOTAL ²	31.32	114	20.43	85	-3.4793	0.0005
Non-Hispanic White	33.81	47	20.71	35	-2.5890	0.0096
Non-Hispanic Black	29.19	54	19.81	42	-2.1769	0.0295
Non-Hispanic Other	30.00	3	50.00	2	0.7055	0.4805
Hispanic	33.33	10	19.35	6	-1.2408	0.2147

¹Proportions are expressed as percentages²Includes unknown race/ethnicity of mother

Table 12-A. (continued)

Comparison of Characteristics of Infants who Died, by Race and Hispanic Origin of Mother

Z-tests for differences in proportions¹

South Carolina, 2020 to 2021

(Residence Data)

	2020		2021		Z-TEST	P-VALUE
	Percent	Number	Percent	Number		

< 5 PRENATAL CARE VISITS						
TOTAL ²	31.32	114	17.55	73	-4.4942	0.0000
Non-Hispanic White	28.78	40	15.38	26	-2.8504	0.0044
Non-Hispanic Black	32.43	60	17.92	38	-3.3443	0.0008
Non-Hispanic Other	40.00	4	50.00	2	0.3416	0.7327
Hispanic	33.33	10	22.58	7	-0.9364	0.3491

PRENATAL CARE BEGAN FIRST TRIMESTER						
TOTAL ²	58.24	212	53.61	223	-1.3006	0.1934
Non-Hispanic White	53.24	74	59.17	100	1.0453	0.2959
Non-Hispanic Black	62.16	115	50.47	107	-2.3404	0.0193
Non-Hispanic Other	60.00	6	50.00	2	-0.3416	0.7327
Hispanic	56.67	17	45.16	14	-0.8986	0.3689

¹Proportions are expressed as percentages²Includes unknown race/ethnicity of mother

Table 13.
Multiple Births Trends
South Carolina, 2017-2021
(Residence Data)

Year	Singleton Births	Singleton Deaths	Infant Mortality Rate ¹	Twin Births	Twin Deaths	Infant Mortality Rate ¹	Higher Order (3+) Births	Higher Order (3+) Deaths	Infant Mortality Rate ¹	Total Births ²	Total Deaths ²	Infant Mortality Rate ¹
2017	55,028	319	5.8	1,950	42	21.5	52	4	76.9	57,030	371	6.5
2018	54,784	352	6.4	1,860	49	26.3	24	4	166.7	56,668	406	7.2
2019	55,089	340	6.2	1,892	38	20.1	63	10	158.7	57,044	391	6.9
2020	53,758	315	5.9	1,914	46	24.0	40	3	75.0	55,713	364	6.5
2021	55,286	346	6.3	1,838	58	31.6	51	7	137.3	57,179	416	7.3
Total	273,945	1,672	6.1	9,454	233	24.6	230	28	121.7	283,634	1,948	6.9

¹Rates are per 1,000 births. Rates calculated with 20 or fewer deaths are unreliable and should be used cautiously

²Includes unknown plurality

Table 14.
 Infant Mortality Rates¹ by Race and Hispanic Origin of Mother and Birthweight² Group
 South Carolina
 2019, 2020, and 2021
 (Residence Data)

Infant Mortality for Very Low Birthweight (0-1499 grams)															
	Total			Non-Hispanic White			Non-Hispanic Black			Non-Hispanic Other			Hispanic		
Year	Number of Live Births*	Number of Infant Deaths	Rate	Number of Live Births	Number of Infant Deaths	Rate	Number of Live Births	Number of Infant Deaths	Rate	Number of Live Births	Number of Infant Deaths	Rate	Number of Live Births	Number of Infant Deaths	Rate
2019	1,042	205	196.7	389	60	154.2	559	124	221.8	29	5	172.4	65	15	230.8
2020	961	204	212.3	302	69	228.5	571	117	204.9	27	5	185.2	61	13	213.1
2021	1,042	198	206.0	364	62	170.3	577	116	201.0	29	2	69.0	72	18	250.0

Infant Mortality for Intermediate Low Birthweight (1500-2499 grams)															
	Total			Non-Hispanic White			Non-Hispanic Black			Non-Hispanic Other			Hispanic		
Year	Number of Live Births*	Number of Infant Deaths	Rate	Number of Live Births	Number of Infant Deaths	Rate	Number of Live Births	Number of Infant Deaths	Rate	Number of Live Births	Number of Infant Deaths	Rate	Number of Live Births	Number of Infant Deaths	Rate
2019	4,580	65	14.2	1,982	32	16.1	2,129	29	13.6	140	0	0	329	4	12.2
2020	4,519	44	9.7	1,971	14	7.1	2,042	23	11.3	129	1	7.8	377	6	15.9
2021	4,688	76	16.8	2,071	35	16.9	2,087	35	16.8	135	1	7.4	395	5	12.7

Infant Mortality for Normal Birthweight (2500+ grams)															
	Total			Non-Hispanic White			Non-Hispanic Black			Non-Hispanic Other			Hispanic		
Year	Number of Live Births*	Number of Infant Deaths	Rate	Number of Live Births	Number of Infant Deaths	Rate	Number of Live Births	Number of Infant Deaths	Rate	Number of Live Births	Number of Infant Deaths	Rate	Number of Live Births	Number of Infant Deaths	Rate
2019	51,410	119	2.3	29,942	53	1.8	14,786	51	3.4	1,484	5	3.4	5,198	10	1.9
2020	50,229	115	2.3	28,957	55	1.9	14,437	45	3.1	1,457	4	2.7	5,378	11	2.0
2021	51,440	136	2.7	30,112	70	2.3	14,067	57	4.1	1,596	1	0.6	5,665	29	5.1

¹Rates per 1,000 live births

²Does not include missing birthweight

*Includes unknown race/ethnicity of mother

Table 14.
 Infant Mortality Rates¹ by Race and Hispanic Origin of Mother and Birthweight² Group
 South Carolina
 2019, 2020, and 2021
 (Residence Data)

Neonatal Mortality for Very Low Birthweight (0-1499 grams)															
	Total			Non-Hispanic White			Non-Hispanic Black			Non-Hispanic Other			Hispanic		
Year	Number of Live Births*	Number of Infant Deaths	Rate	Number of Live Births	Number of Infant Deaths	Rate	Number of Live Births	Number of Infant Deaths	Rate	Number of Live Births	Number of Infant Deaths	Rate	Number of Live Births	Number of Infant Deaths	Rate
2019	1,042	182	174.7	389	55	141.4	559	109	195.0	29	5	172.4	65	12	184.6
2020	961	173	180.0	302	60	198.7	571	100	175.1	27	3	111.1	61	10	163.9
2021	1,042	174	181.1	364	55	151.1	577	100	173.3	29	2	69.0	72	17	236.1

Neonatal Mortality for Intermediate Low Birthweight (1500-2499 grams)															
	Total			Non-Hispanic White			Non-Hispanic Black			Non-Hispanic Other			Hispanic		
Year	Number of Live Births*	Number of Infant Deaths	Rate	Number of Live Births	Number of Infant Deaths	Rate	Number of Live Births	Number of Infant Deaths	Rate	Number of Live Births	Number of Infant Deaths	Rate	Number of Live Births	Number of Infant Deaths	Rate
2019	4,580	34	7.4	1,982	18	9.1	2,129	14	6.6	140	0	0.0	329	2	6.1
2020	4,519	28	6.2	1,971	10	5.1	2,042	11	5.4	129	1	7.8	377	6	15.9
2021	4,688	42	9.3	2,071	24	11.6	2,087	15	7.2	135	0	0.0	395	3	7.6

Neonatal Mortality for Normal Birthweight (2500+ grams)															
	Total			Non-Hispanic White			Non-Hispanic Black			Non-Hispanic Other			Hispanic		
Year	Number of Live Births*	Number of Infant Deaths	Rate	Number of Live Births	Number of Infant Deaths	Rate	Number of Live Births	Number of Infant Deaths	Rate	Number of Live Births	Number of Infant Deaths	Rate	Number of Live Births	Number of Infant Deaths	Rate
2019	51,410	39	0.8	29,942	19	0.6	14,786	14	0.9	1,484	1	0.7	5,198	5	1.0
2020	50,229	45	0.9	28,957	29	1.0	14,437	11	0.8	1,457	3	2.1	5,378	2	0.4
2021	51,440	48	1.0	30,112	27	0.9	14,067	16	1.1	1,596	1	0.6	5,665	4	0.7

¹Rates per 1,000 live births

²Does not include missing birthweight

*Includes unknown race/ ethnicity of mother

Table 14.
 Infant Mortality Rates¹ by Race and Hispanic Origin of Mother and Birthweight² Group
 South Carolina
 2019, 2020, and 2021
 (Residence Data)

Postneonatal Mortality for Very Low Birthweight (0-1499 grams)															
	Total			Non-Hispanic White			Non-Hispanic Black			Non-Hispanic Other			Hispanic		
Year	Number of Live Births*	Number of Infant Deaths	Rate	Number of Live Births	Number of Infant Deaths	Rate	Number of Live Births	Number of Infant Deaths	Rate	Number of Live Births	Number of Infant Deaths	Rate	Number of Live Births	Number of Infant Deaths	Rate
2019	1,042	23	22.1	389	5	12.9	559	15	26.8	29	0	0.0	65	3	46.2
2020	961	31	32.3	302	9	29.8	571	17	29.8	27	2	74.1	61	3	49.2
2021	1,042	24	25.0	364	7	19.2	577	16	27.7	29	0	0.0	72	1	13.9

Postneonatal Mortality for Intermediate Low Birthweight (1500-2499 grams)															
	Total			Non-Hispanic White			Non-Hispanic Black			Non-Hispanic Other			Hispanic		
Year	Number of Live Births*	Number of Infant Deaths	Rate	Number of Live Births	Number of Infant Deaths	Rate	Number of Live Births	Number of Infant Deaths	Rate	Number of Live Births	Number of Infant Deaths	Rate	Number of Live Births	Number of Infant Deaths	Rate
2019	4,580	31	6.8	1,982	14	7.1	2,129	15	7.0	140	0	0.0	329	2	6.1
2020	4,519	16	3.5	1,971	4	2.0	2,042	12	5.9	129	0	0.0	377	0	0.0
2021	4,688	34	7.5	2,071	11	5.3	2,087	20	9.6	135	1	7.4	395	2	5.1

Postneonatal Mortality for Normal Birthweight (2500+ grams)															
	Total			Non-Hispanic White			Non-Hispanic Black			Non-Hispanic Other			Hispanic		
Year	Number of Live Births*	Number of Infant Deaths	Rate	Number of Live Births	Number of Infant Deaths	Rate	Number of Live Births	Number of Infant Deaths	Rate	Number of Live Births	Number of Infant Deaths	Rate	Number of Live Births	Number of Infant Deaths	Rate
2019	51,410	80	1.6	29,942	34	1.1	14,786	37	2.5	1,484	4	2.7	5,198	5	1.0
2020	50,229	70	1.4	28,957	26	0.9	14,437	34	2.4	1,457	1	0.7	5,378	9	1.7
2021	51,440	88	1.8	30,112	43	1.4	14,067	41	2.9	1,596	0	0.0	5,665	4	0.7

¹Rates per 1,000 live births

²Does not include missing birthweight

*Includes unknown race

Figure 1.
Percentage of Infant Deaths by Birthweight Group
South Carolina, 2019-2021, Residence Data

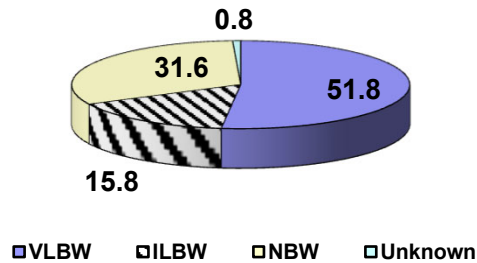


Figure 1-A.
Percentage of Non-Hispanic White Infant Deaths by Birthweight Group
South Carolina, 2019-2021, Residence Data

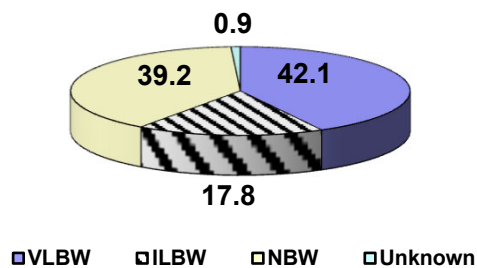


Figure 1-B.
Percentage of Non-Hispanic Black Infant Deaths by Birthweight Group
South Carolina, 2019-2021, Residence Data

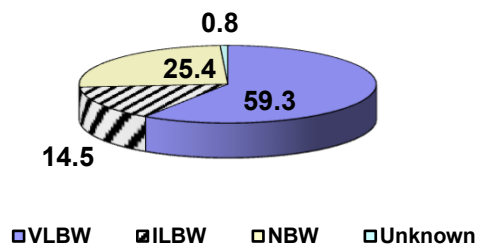


Figure 1-C.
Percentage of Non-Hispanic Other Infant Deaths by Birthweight Group
South Carolina, 2019-2021, Residence Data

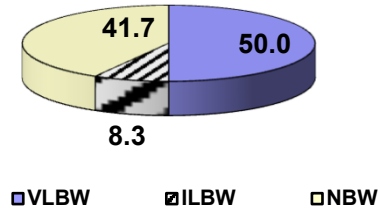


Figure 1-D.
Percentage of Hispanic Infant Deaths by Birthweight Group South
Carolina, 2019-2021, Residence Data

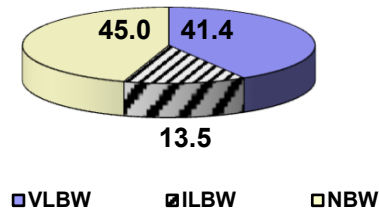
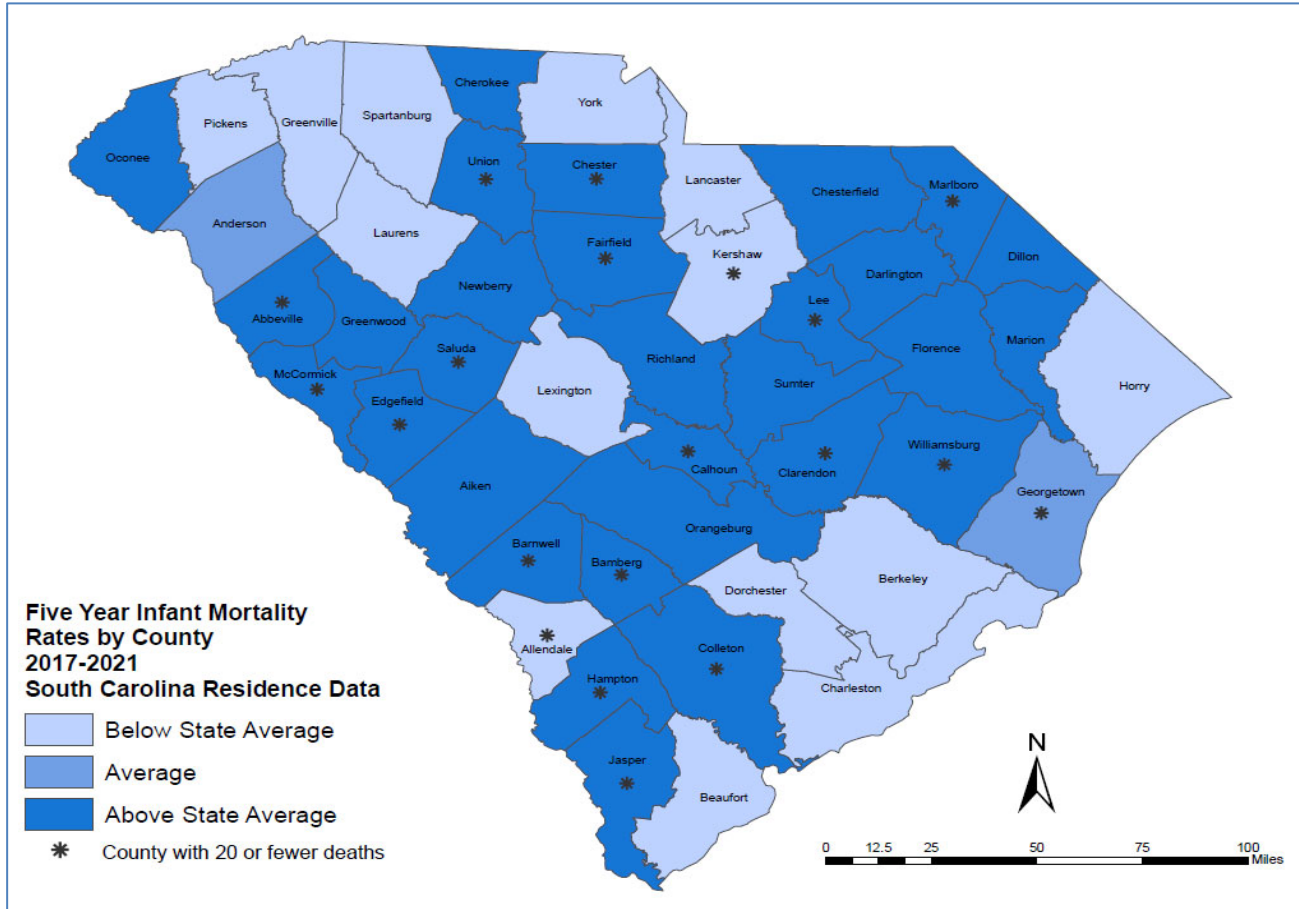


Figure 2.
Five Year Infant Mortality Rates¹ by County
South Carolina
2017-2021
(Residence Data)



Above State Average indicates a rate greater than 7.2.
State Average indicates a rate between 6.6 and 7.2 inclusive.
Below State Average indicates a rate lower than 6.6.

¹Rate per 1,000 live births. Rates calculated with 20 or fewer deaths are unreliable and should be used cautiously.