



Infant Mortality and Selected Birth Characteristics



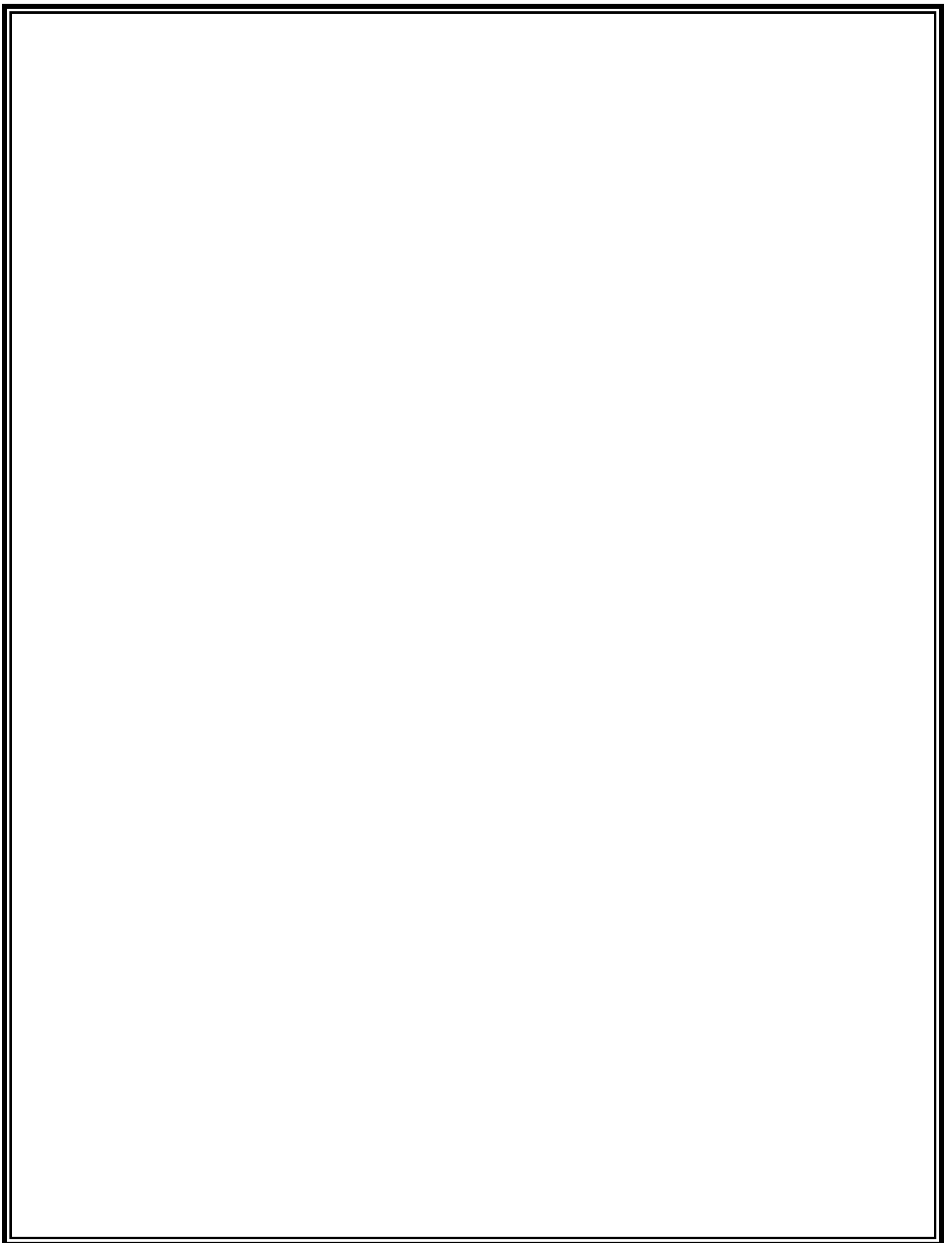
2012 South Carolina Residence Data

September 2013

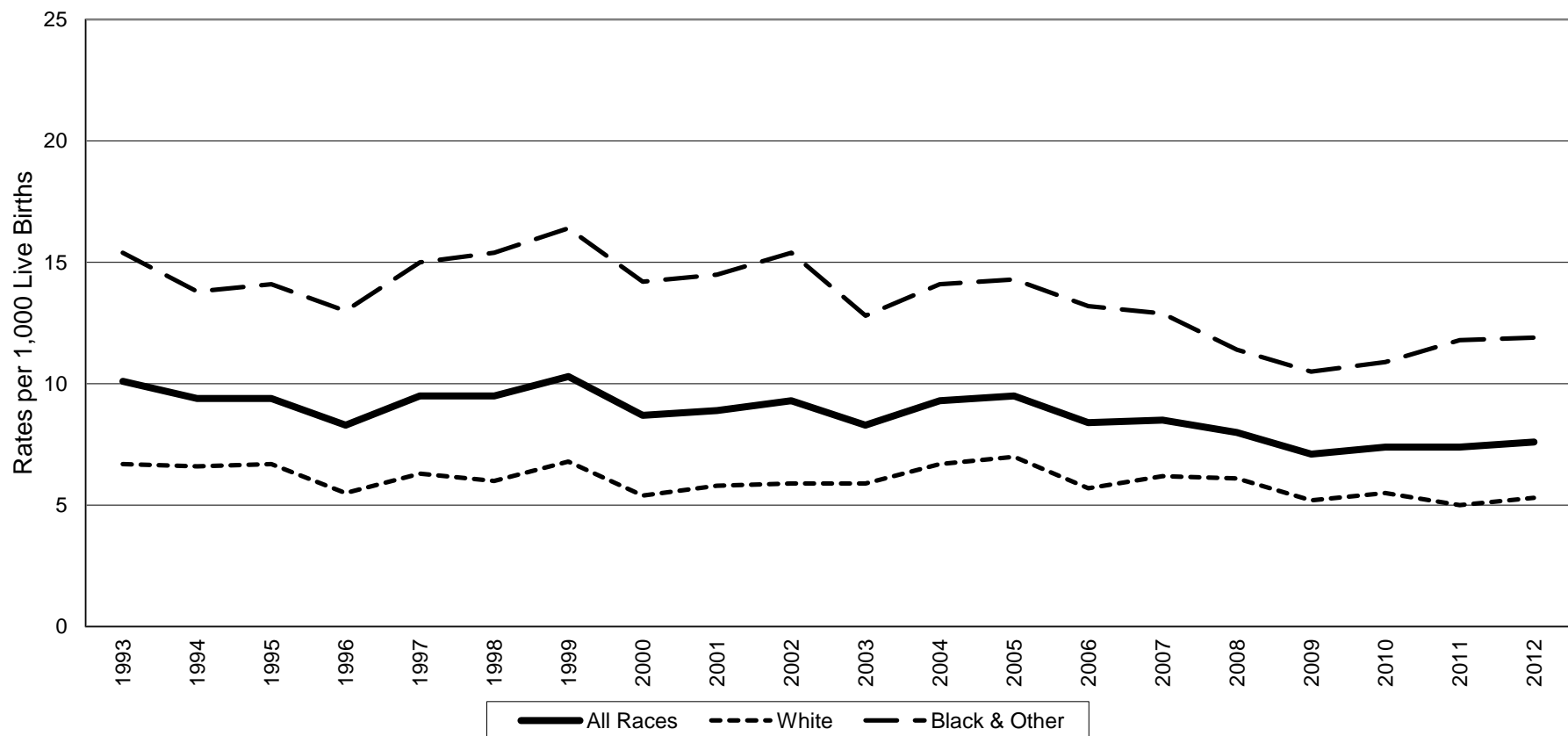
**South Carolina Department of Health and Environmental Control
Office of Public Health Statistics and Information Services
Division of Biostatistics
2600 Bull Street
Columbia, SC 29201**

**Phone: (803)898-3649
Fax: (803)898-3661**





South Carolina Infant Mortality Rates¹ by Race² Residence Data, 1993-2012



	1993	1994	1995	1996	1997	1998	1999	2000	2001	2002	2003	2004	2005	2006	2007	2008	2009	2010	2011	2012
All Races	10.1	9.4	9.4	8.3	9.5	9.5	10.3	8.7	8.9	9.3	8.3	9.3	9.5	8.4	8.5	8.0	7.1	7.4	7.4	7.6
White	6.7	6.6	6.7	5.5	6.3	6.0	6.8	5.4	5.8	5.9	5.9	6.7	7.0	5.7	6.2	6.1	5.2	5.5	5.0	5.3
Black & Other	15.4	13.8	14.1	13.0	15.0	15.4	16.4	14.2	14.5	15.4	12.8	14.1	14.3	13.2	12.9	11.4	10.5	10.9	11.8	11.9

¹Rates per 1,000 live births

²Race of mother

Table 1.
 Infant Mortality Rates¹ with 95% Confidence Intervals²
 South Carolina, 1993-2012
 (Residence Data)

Year	Number of Live Births	Number of Infant Deaths	Infant Mortality Rate	95% Confidence Intervals
1993	53,715	544	10.1	(9.3, 11.0)
1994	51,907	486	9.4	(8.5, 10.2)
1995	50,913	480	9.4	(8.6, 10.2)
1996	51,105	424	8.3	(7.5, 9.1)
1997	52,205	494	9.5	(8.7, 10.3)
1998	53,833	511	9.5	(8.7, 10.3)
1999	54,706	564	10.3	(9.4, 11.2)
2000	55,964	488	8.7	(7.9, 9.5)
2001	55,748	496	8.9	(8.1, 9.7)
2002	54,453	507	9.3	(8.5, 10.1)
2003	55,461	463	8.3	(7.5, 9.1)
2004	56,543	524	9.3	(8.5, 10.1)
2005	57,538	549	9.5	(8.7, 10.3)
2006	62,191	520	8.4	(7.6, 9.1)
2007	62,933	538	8.5	(7.8, 9.3)
2008	63,077	504	8.0	(7.3, 8.7)
2009	60,682	430	7.1	(6.4, 7.8)
2010	58,325	430	7.4	(6.7, 8.1)
2011	57,338	423	7.4	(6.7, 8.1)
2012	57,100	435	7.6	(6.9, 8.3)

Table 2.
 Infant Mortality Rates¹ with 95% Confidence Intervals²
 South Carolina
 1993-1997, 1998-2002, 2003-2007, 2008-2012
 (Residence Data)

Years	Number of Live Births	Number of Infant Deaths	Infant Mortality Rate	95% Confidence Intervals
1993-1997	259,845	2,428	9.3	(9.0, 9.7)
1998-2002	274,704	2,566	9.3	(9.0, 9.7)
2003-2007	294,666	2,594	8.8	(8.5, 9.1)
2008-2012	296,522	2,222	7.5	(7.2, 7.8)

¹Rates per 1,000 live births

² $r \pm 61.981 (r/n)^{1/2}$, where r = infant mortality rate and n = number of live births

Table 3.
 Infant, Neonatal and Postneonatal Mortality and Mortality Rates¹ by Race²
 South Carolina
 2008, 2009, 2010, 2011 and 2012
 (Residence Data)

Infant Mortality									
	Total			White			Black & Other		
Year	Number of Live Birth	Number of Infant Death	Rate	Number of Live Birth	Number of Infant Death	Rate	Number of Live Birth	Number of Infant Death	Rate
2008	63,077*	504*	8.0	40,713	248	6.1	22,321	255	11.4
2009	60,682*	430	7.1	39,348	206	5.2	21,284	224	10.5
2010	58,325*	430	7.4	37,927	208	5.5	20,361	222	10.9
2011	57,338*	423	7.4	37,406	188	5.0	19,894	235	11.8
2012	57,100*	435	7.6	37,092	197	5.3	19,959	238	11.9

Neonatal Mortality (<28 days)									
	Total			White			Black & Other		
Year	Number of Live Birth	Number of Infant Death	Rate	Number of Live Birth	Number of Infant Death	Rate	Number of Live Birth	Number of Infant Death	Rate
2008	63,077*	311*	4.9	40,713	145	3.6	22,321	164	7.3
2009	60,682*	260	4.3	39,348	121	3.1	21,284	139	6.5
2010	58,325*	266	4.6	37,927	124	3.3	20,361	142	7.0
2011	57,338*	254	4.4	37,406	104	2.8	19,894	150	7.5
2012	57,100*	270	4.7	37,092	118	3.2	19,959	152	7.6

Postneonatal Mortality (28-364 days)									
	Total			White			Black & Other		
Year	Number of Live Birth	Number of Infant Death	Rate	Number of Live Birth	Number of Infant Death	Rate	Number of Live Birth	Number of Infant Death	Rate
2008	63,077*	194	3.1	40,713	103	2.5	22,321	91	4.1
2009	60,682*	170	2.8	39,348	85	2.2	21,284	85	4.0
2010	58,325*	164	2.8	37,927	84	2.2	20,361	80	3.9
2011	57,338*	169	2.9	37,406	84	2.2	19,894	85	4.3
2012	57,100*	165	2.9	37,092	79	2.1	19,959	86	4.3

¹Rates per 1,000 live births

²Race of mother

*Includes unknown race

Table 4.
Infant Mortality and Infant Mortality Rates¹
South Carolina and Each County, 2012, 2010-2012, 2007-2009
(Residence Data)

County of Residence	2012		2010-2012		2007-2009	
	Number	Rate	Number	Rate	Number	Rate
South Carolina	435	7.6	1,288	7.5	1,472	7.9
Abbeville	5	19.8	15	19.2	13	15.5
Aiken	16	8.4	37	6.4	43	7.2
Allendale	1	10.5	3	8.8	9	22.5
Anderson	17	7.8	51	7.7	53	7.4
Bamberg	2	13.2	7	14.1	2	3.6
Barnwell	3	9.4	7	7.7	5	5.2
Beaufort	10	4.9	28	4.5	35	5.1
Berkeley	21	8.1	54	7.0	59	7.6
Calhoun	-	0	2	4.4	5	9.7
Charleston	27	5.8	90	6.3	132	8.6
Cherokee	4	5.9	17	8.2	20	9.3
Chester	4	9.0	5	4.0	11	8.1
Chesterfield	4	7.7	20	12.9	23	13.2
Clarendon	5	13.8	9	8.5	7	5.7
Colleton	9	19.8	19	13.7	14	8.5
Darlington	10	12.2	30	12.4	26	10.3
Dillon	3	6.9	11	8.3	6	4.0
Dorchester	9	4.9	29	5.3	29	5.1
Edgefield	2	9.8	3	5.7	5	6.7
Fairfield	5	23.5	10	14.1	5	6.3
Florence	31	16.9	74	13.6	65	11.1
Georgetown	7	11.9	17	9.5	21	9.8
Greenville	32	5.2	108	5.9	139	7.0
Greenwood	10	11.2	24	8.9	31	10.5
Hampton	1	4.3	2	2.8	7	8.0
Horry	24	8.2	69	7.6	92	9.3
Jasper	2	6.5	6	6.1	10	8.3
Kershaw	3	4.1	12	5.5	14	5.7
Lancaster	8	8.8	24	9.1	17	6.0
Laurens	4	5.3	13	5.4	27	10.3
Lee	2	10.8	7	12.7	4	5.7
Lexington	26	8.0	65	6.6	68	6.6
McCormick	1	18.2	5	27.3	3	11.2
Marion	7	18.8	21	17.0	27	18.4
Marlboro	1	3.4	11	12.0	9	8.3
Newberry	3	7.3	7	5.4	10	6.3
Oconee	5	6.1	11	4.5	20	8.1
Orangeburg	12	11.1	43	12.2	57	13.8
Pickens	10	8.5	36	10.0	18	4.6
Richland	41	8.6	110	7.5	88	5.8
Saluda	3	11.5	9	11.8	10	12.3
Spartanburg	7	2.0	54	5.0	96	8.2
Sumter	10	6.5	34	7.4	37	7.4
Union	1	3.3	4	4.4	11	10.5
Williamsburg	7	20.3	16	14.9	22	16.2
York	20	6.7	58	6.6	67	7.3

¹Rates per 1,000 live births. Rates calculated with 20 or fewer deaths are unreliable and should be used cautiously.

Table 4-A.
White¹ Infant Mortality and Infant Mortality Rates²
South Carolina and Each County, 2012, 2010-2012, 2007-2009
(Residence Data)

County of Residence	2012		2010-2012		2007-2009	
	Number	Rate	Number	Rate	Number	Rate
South Carolina	197	5.3	593	5.3	704	5.8
Abbeville	3	18.1	7	13.8	3	5.5
Aiken	9	7.1	20	5.2	19	4.7
Allendale	-	0	-	0	-	0
Anderson	10	5.8	31	6.0	30	5.3
Bamberg	-	0	1	6.2	1	5.7
Barnwell	-	0	-	0	2	4.7
Beaufort	8	5.5	18	4.0	15	3.0
Berkeley	6	3.2	25	4.5	35	6.3
Calhoun	-	0	-	0	3	11.5
Charleston	15	5.0	41	4.5	53	5.7
Cherokee	4	8.4	14	9.0	12	7.7
Chester	2	8.5	2	3.0	7	10.0
Chesterfield	2	6.5	9	10.0	11	10.7
Clarendon	2	13.8	3	6.8	2	3.8
Colleton	1	4.2	5	6.8	4	4.6
Darlington	4	9.6	13	10.9	10	8.0
Dillon	-	0	1	1.9	3	4.8
Dorchester	3	2.3	13	3.4	16	4.1
Edgefield	1	10.6	1	4.1	-	0
Fairfield	-	0	3	13.6	2	8.6
Florence	4	4.6	23	8.7	18	6.5
Georgetown	1	3.4	3	3.2	6	5.2
Greenville	22	4.7	65	4.7	71	4.7
Greenwood	5	9.3	12	7.3	16	8.6
Hampton	1	11.6	1	3.5	1	2.9
Horry	16	7.0	42	5.8	69	8.8
Jasper	2	11.0	3	5.5	5	7.1
Kershaw	2	3.7	8	5.0	10	5.8
Lancaster	5	7.8	14	7.5	4	2.0
Laurens	4	7.6	8	4.8	21	11.6
Lee	-	0	1	6.8	-	0
Lexington	11	4.3	36	4.6	47	5.6
McCormick	-	0	-	0	1	12.3
Marion	-	0	4	10.3	5	10.2
Marlboro	-	0	2	5.9	3	7.3
Newberry	1	4.1	2	2.5	7	6.8
Oconee	4	5.4	9	4.0	19	8.5
Orangeburg	2	6.6	6	5.9	12	9.8
Pickens	9	8.4	31	9.6	18	5.1
Richland	12	6.0	26	4.2	17	2.6
Saluda	1	5.2	5	8.8	7	11.9
Spartanburg	4	1.5	35	4.4	57	6.7
Sumter	3	4.2	9	4.2	11	4.7
Union	1	5.2	3	5.1	7	10.5
Williamsburg	4	34.8	4	12.0	1	2.8
York	13	6.0	33	5.2	43	6.3

¹Race of mother

²Rates per 1,000 live births. Rates calculated with 20 or fewer deaths are unreliable and should be used cautiously.

Table 4-B.
Black and Other¹ Infant Mortality and Infant Mortality Rates²
South Carolina and Each County, 2012, 2010-2012, 2007-2009
(Residence Data)

County of Residence	2012		2010-2012		2007-2009	
	Number	Rate	Number	Rate	Number	Rate
South Carolina	238	11.9	695	11.5	767	11.6
Abbeville	2	23.0	8	29.3	10	34.2
Aiken	7	11.0	17	9.0	24	12.4
Allendale	1	13.0	3	10.5	9	27.4
Anderson	7	14.7	20	13.8	23	15.3
Bamberg	2	20.8	6	18.0	1	2.7
Barnwell	3	17.1	7	14.4	3	5.7
Beaufort	2	3.6	10	5.9	20	10.5
Berkeley	15	20.3	29	13.8	24	10.8
Calhoun	-	0	2	9.6	2	8.0
Charleston	12	7.1	49	9.4	79	12.9
Cherokee	-	0	3	5.6	8	13.5
Chester	2	9.8	3	5.2	4	6.1
Chesterfield	2	9.4	11	16.9	12	16.9
Clarendon	3	13.8	6	9.6	5	7.2
Colleton	8	37.0	14	21.4	10	13.0
Darlington	6	14.8	17	13.8	16	12.6
Dillon	3	11.8	10	12.8	3	3.5
Dorchester	6	11.2	16	10.0	13	7.6
Edgefield	1	9.0	2	7.1	5	14.5
Fairfield	5	34.5	7	14.4	3	5.4
Florence	27	28.1	51	18.1	47	15.1
Georgetown	6	20.5	14	16.3	15	15.4
Greenville	10	6.7	43	9.8	68	14.5
Greenwood	5	14.2	12	11.3	15	13.6
Hampton	-	0	1	2.4	6	11.2
Horry	8	12.2	27	14.0	23	11.5
Jasper	-	0	3	6.9	5	10.0
Kershaw	1	5.4	4	6.7	4	5.4
Lancaster	3	11.2	10	12.8	13	15.0
Laurens	-	0	5	6.7	6	7.4
Lee	2	15.3	6	14.9	4	7.5
Lexington	15	22.2	29	14.7	21	10.6
McCormick	1	27.8	5	43.5	2	10.6
Marion	7	26.3	17	20.0	22	22.4
Marlboro	1	5.6	9	15.5	6	9.0
Newberry	2	11.8	5	9.6	3	5.4
Oconee	1	12.7	2	8.5	1	4.4
Orangeburg	10	12.8	37	14.8	44	15.1
Pickens	1	9.5	5	14.3	-	0
Richland	29	10.4	84	10.0	71	8.1
Saluda	2	28.2	4	20.7	3	13.4
Spartanburg	3	3.2	19	6.6	39	12.2
Sumter	7	8.6	25	10.3	26	9.9
Union	-	0	1	3.0	4	10.5
Williamsburg	3	13.1	12	16.2	21	21.2
York	7	8.7	25	10.5	24	10.3

¹Race of mother

²Rates per 1,000 live births. Rates calculated with 20 or fewer deaths are unreliable and should be used cautiously.

Table 5.

Infant, Neonatal and Postneonatal Mortality Rates¹ by Race²
 and Percent Changes from 2011 to 2012
 South Carolina
 (Residence Data)

Infant Mortality			
Year	Total	White	Black & Other
2011	7.4	5.0	11.8
2012	7.6	5.3	11.9
Percent Change	2.7%	6.0%	0.8%

Neonatal Mortality			
Year	Total	White	Black & Other
2011	4.4	2.8	7.5
2012	4.7	3.2	7.6
Percent Change	6.8%	14.3%	1.3%

Postneonatal Mortality			
Year	Total	White	Black & Other
2011	2.9	2.2	4.3
2012	2.9	2.1	4.3
Percent Change	0%	-4.5%	0%

¹Rates per 1,000 live births

²Race of mother

Table 6.
Neonatal Mortality and Neonatal Mortality Rates¹
South Carolina and Each County, 2012, 2010-2012, 2007-2009
(Residence Data)

County of Residence	2012		2010-2012		2007-2009	
	Number	Rate	Number	Rate	Number	Rate
South Carolina	270	4.7	790	4.6	927	5.0
Abbeville	4	15.8	12	15.3	7	8.3
Aiken	11	5.7	21	3.6	28	4.7
Allendale	1	10.5	3	8.8	3	7.5
Anderson	5	2.3	28	4.2	32	4.5
Bamberg	2	13.2	6	12.1	1	1.8
Barnwell	1	3.1	3	3.3	4	4.2
Beaufort	5	2.5	18	2.9	25	3.6
Berkeley	11	4.2	28	3.7	35	4.5
Calhoun	-	0	2	4.4	4	7.8
Charleston	17	3.6	50	3.5	87	5.6
Cherokee	3	4.4	10	4.8	10	4.6
Chester	2	4.5	3	2.4	6	4.4
Chesterfield	4	7.7	14	9.0	17	9.8
Clarendon	2	5.5	5	4.7	5	4.1
Colleton	5	11.0	13	9.4	7	4.2
Darlington	3	3.6	16	6.6	16	6.3
Dillon	2	4.6	7	5.3	3	2.0
Dorchester	8	4.4	17	3.1	21	3.7
Edgefield	1	4.9	2	3.8	5	6.7
Fairfield	4	18.8	7	9.9	4	5.1
Florence	19	10.4	46	8.4	40	6.8
Georgetown	4	6.8	12	6.7	14	6.5
Greenville	23	3.7	63	3.4	99	5.0
Greenwood	7	7.9	18	6.6	21	7.1
Hampton	-	0	1	1.4	6	6.8
Horry	16	5.4	41	4.5	67	6.8
Jasper	2	6.5	4	4.1	7	5.8
Kershaw	2	2.7	6	2.7	9	3.6
Lancaster	6	6.6	16	6.0	11	3.9
Laurens	2	2.7	9	3.7	15	5.7
Lee	1	5.4	4	7.3	3	4.2
Lexington	15	4.6	38	3.8	35	3.4
McCormick	-	0	4	21.9	2	7.4
Marion	7	18.8	17	13.7	19	12.9
Marlboro	1	3.4	11	12.0	6	5.6
Newberry	1	2.4	3	2.3	4	2.5
Oconee	3	3.7	6	2.4	14	5.7
Orangeburg	9	8.3	27	7.7	39	9.4
Pickens	7	5.9	25	7.0	13	3.3
Richland	26	5.4	72	4.9	48	3.1
Saluda	2	7.6	7	9.2	4	4.9
Spartanburg	4	1.1	27	2.5	60	5.1
Sumter	5	3.2	18	3.9	18	3.6
Union	-	0	1	1.1	5	4.8
Williamsburg	5	14.5	12	11.2	14	10.3
York	12	4.0	36	4.1	34	3.7

¹Rates per 1,000 live births. Rates calculated with 20 or fewer deaths are unreliable and should be used cautiously.

Table 6-A.
White¹ Neonatal Mortality and Neonatal Mortality Rates²
South Carolina and Each County, 2012, 2010-2012, 2007-2009
(Residence Data)

County of Residence	2012		2010-2012		2007-2009	
	Number	Rate	Number	Rate	Number	Rate
South Carolina	118	3.2	346	3.1	431	3.6
Abbeville	2	12.0	5	9.8	1	1.8
Aiken	6	4.7	11	2.8	12	3.0
Allendale	-	0	-	0	-	0
Anderson	2	1.2	17	3.3	16	2.8
Bamberg	-	0	1	6.2	-	0
Barnwell	-	0	-	0	2	4.7
Beaufort	3	2.1	10	2.2	11	2.2
Berkeley	1	0.5	10	1.8	19	3.4
Calhoun	-	0	-	0	2	7.6
Charleston	10	3.3	23	2.5	34	3.7
Cherokee	3	6.3	8	5.2	4	2.6
Chester	1	4.2	1	1.5	3	4.3
Chesterfield	2	6.5	5	5.5	7	6.8
Clarendon	-	0	1	2.3	1	1.9
Colleton	-	0	3	4.1	3	3.4
Darlington	1	2.4	7	5.9	5	4.0
Dillon	-	0	-	0	2	3.2
Dorchester	2	1.5	6	1.6	11	2.8
Edgefield	-	0	-	0	-	0
Fairfield	-	0	2	9.1	2	8.6
Florence	2	2.3	13	4.9	9	3.2
Georgetown	-	0	2	2.1	4	3.4
Greenville	17	3.6	44	3.2	51	3.4
Greenwood	4	7.4	10	6.1	10	5.4
Hampton	-	0	-	0	-	0
Horry	14	6.1	28	3.9	51	6.5
Jasper	2	11.0	3	5.5	4	5.7
Kershaw	1	1.8	4	2.5	5	2.9
Lancaster	5	7.8	10	5.3	3	1.5
Laurens	2	3.8	5	3.0	12	6.6
Lee	-	0	-	0	-	0
Lexington	6	2.4	20	2.5	25	3.0
McCormick	-	0	-	0	-	0
Marion	-	0	2	5.1	2	4.1
Marlboro	-	0	2	5.9	3	7.3
Newberry	-	0	1	1.3	4	3.9
Oconee	2	2.7	4	1.8	14	6.2
Orangeburg	2	6.6	3	2.9	7	5.7
Pickens	6	5.6	20	6.2	13	3.7
Richland	7	3.5	18	2.9	11	1.7
Saluda	1	5.2	4	7.0	3	5.1
Spartanburg	1	0.4	13	1.6	34	4.0
Sumter	2	2.8	5	2.3	6	2.6
Union	-	0	1	1.7	3	4.5
Williamsburg	3	26.1	3	9.0	-	0
York	8	3.7	20	3.1	22	3.2

¹Race of mother

²Rates per 1,000 live births. Rates calculated with 20 or fewer deaths are unreliable and should be used cautiously.

Table 6-B.

Black and Other¹ Neonatal Mortality and Neonatal Mortality Rates²
 South Carolina and Each County, 2012, 2010-2012, 2007-2009
 (Residence Data)

County of Residence	2012		2010-2012		2007-2009	
	Number	Rate	Number	Rate	Number	Rate
South Carolina	152	7.6	444	7.4	495	7.5
Abbeville	2	23.0	7	25.6	6	20.5
Aiken	5	7.9	10	5.3	16	8.3
Allendale	1	13.0	3	10.5	3	9.1
Anderson	3	6.3	11	7.6	16	10.7
Bamberg	2	20.8	5	15.0	1	2.7
Barnwell	1	5.7	3	6.2	2	3.8
Beaufort	2	3.6	8	4.7	14	7.3
Berkeley	10	13.5	18	8.6	16	7.2
Calhoun	-	0	2	9.6	2	8.0
Charleston	7	4.1	27	5.2	53	8.6
Cherokee	-	0	2	3.7	6	10.2
Chester	1	4.9	2	3.5	3	4.6
Chesterfield	2	9.4	9	13.8	10	14.1
Clarendon	2	9.2	4	6.4	4	5.7
Colleton	5	23.1	10	15.3	4	5.2
Darlington	2	4.9	9	7.3	11	8.7
Dillon	2	7.8	7	9.0	1	1.2
Dorchester	6	11.2	11	6.9	10	5.8
Edgefield	1	9.0	2	7.1	5	14.5
Fairfield	4	27.6	5	10.3	2	3.6
Florence	17	17.7	33	11.7	31	10.0
Georgetown	4	13.7	10	11.7	10	10.2
Greenville	6	4.0	19	4.3	48	10.2
Greenwood	3	8.5	8	7.5	11	10.0
Hampton	-	0	1	2.4	6	11.2
Horry	2	3.0	13	6.8	16	8.0
Jasper	-	0	1	2.3	3	6.0
Kershaw	1	5.4	2	3.3	4	5.4
Lancaster	1	3.7	6	7.7	8	9.2
Laurens	-	0	4	5.4	3	3.7
Lee	1	7.6	4	9.9	3	5.6
Lexington	9	13.3	18	9.1	10	5.1
McCormick	-	0	4	34.8	2	10.6
Marion	7	26.3	15	17.7	17	17.3
Marlboro	1	5.6	9	15.5	3	4.5
Newberry	1	5.9	2	3.8	-	0
Oconee	1	12.7	2	8.5	-	0
Orangeburg	7	9.0	24	9.6	31	10.6
Pickens	1	9.5	5	14.3	-	0
Richland	19	6.8	54	6.4	37	4.2
Saluda	1	14.1	3	15.5	1	4.5
Spartanburg	3	3.2	14	4.9	26	8.1
Sumter	3	3.7	13	5.3	12	4.6
Union	-	0	-	0	2	5.2
Williamsburg	2	8.7	9	12.2	14	14.1
York	4	5.0	16	6.7	12	5.1

¹Race of mother

²Rates per 1,000 live births. Rates calculated with 20 or fewer deaths are unreliable and should be used cautiously.

Table 7.
Postneonatal Mortality and Postneonatal Mortality Rates¹
South Carolina and Each County, 2012, 2010-2012, 2007-2009
(Residence Data)

County of Residence	2012		2010-2012		2007-2009	
	Number	Rate	Number	Rate	Number	Rate
South Carolina	165	2.9	498	2.9	545	2.9
Abbeville	1	4.0	3	3.8	6	7.1
Aiken	5	2.6	16	2.8	15	2.5
Allendale	-	0	-	0	6	15.0
Anderson	12	5.5	23	3.5	21	2.9
Bamberg	-	0	1	2.0	1	1.8
Barnwell	2	6.3	4	4.4	1	1.0
Beaufort	5	2.5	10	1.6	10	1.4
Berkeley	10	3.8	26	3.4	24	3.1
Calhoun	-	0	-	0	1	1.9
Charleston	10	2.1	40	2.8	45	2.9
Cherokee	1	1.5	7	3.4	10	4.6
Chester	2	4.5	2	1.6	5	3.7
Chesterfield	-	0	6	3.9	6	3.5
Clarendon	3	8.3	4	3.8	2	1.6
Colleton	4	8.8	6	4.3	7	4.2
Darlington	7	8.5	14	5.8	10	4.0
Dillon	1	2.3	4	3.0	3	2.0
Dorchester	1	0.5	12	2.2	8	1.4
Edgefield	1	4.9	1	1.9	-	0
Fairfield	1	4.7	3	4.2	1	1.3
Florence	12	6.6	28	5.1	25	4.3
Georgetown	3	5.1	5	2.8	7	3.3
Greenville	9	1.5	45	2.5	40	2.0
Greenwood	3	3.4	6	2.2	10	3.4
Hampton	1	4.3	1	1.4	1	1.1
Horry	8	2.7	28	3.1	25	2.5
Jasper	-	0	2	2.0	3	2.5
Kershaw	1	1.4	6	2.7	5	2.0
Lancaster	2	2.2	8	3.0	6	2.1
Laurens	2	2.7	4	1.7	12	4.6
Lee	1	5.4	3	5.4	1	1.4
Lexington	11	3.4	27	2.7	33	3.2
McCormick	1	18.2	1	5.5	1	3.7
Marion	-	0	4	3.2	8	5.4
Marlboro	-	0	-	0	3	2.8
Newberry	2	4.9	4	3.1	6	3.8
Oconee	2	2.5	5	2.0	6	2.4
Orangeburg	3	2.8	16	4.5	18	4.4
Pickens	3	2.5	11	3.1	5	1.3
Richland	15	3.1	38	2.6	40	2.6
Saluda	1	3.8	2	2.6	6	7.4
Spartanburg	3	0.8	27	2.5	36	3.1
Sumter	5	3.2	16	3.5	19	3.8
Union	1	3.3	3	3.3	6	5.7
Williamsburg	2	5.8	4	3.7	8	5.9
York	8	2.7	22	2.5	33	3.6

¹Rates per 1,000 live births. Rates calculated with 20 or fewer deaths are unreliable and should be used cautiously.

Table 7-A.

White¹ Postneonatal Mortality and Postneonatal Mortality Rates²
 South Carolina and Each County, 2012, 2010-2012, 2007-2009
 (Residence Data)

County of Residence	2012		2010-2012		2007-2009	
	Number	Rate	Number	Rate	Number	Rate
South Carolina	79	2.1	247	2.2	273	2.3
Abbeville	1	6.0	2	3.9	2	3.6
Aiken	3	2.4	9	2.3	7	1.7
Allendale	-	0	-	0	-	0
Anderson	8	4.7	14	2.7	14	2.5
Bamberg	-	0	-	0	1	5.7
Barnwell	-	0	-	0	-	0
Beaufort	5	3.4	8	1.8	4	0.8
Berkeley	5	2.7	15	2.7	16	2.9
Calhoun	-	0	-	0	1	3.8
Charleston	5	1.7	18	2.0	19	2.0
Cherokee	1	2.1	6	3.9	8	5.1
Chester	1	4.2	1	1.5	4	5.7
Chesterfield	-	0	4	4.4	4	3.9
Clarendon	2	13.8	2	4.6	1	1.9
Colleton	1	4.2	2	2.7	1	1.1
Darlington	3	7.2	6	5.0	5	4.0
Dillon	-	0	1	1.9	1	1.6
Dorchester	1	0.8	7	1.8	5	1.3
Edgefield	1	10.6	1	4.1	-	0
Fairfield	-	0	1	4.5	-	0
Florence	2	2.3	10	3.8	9	3.2
Georgetown	1	3.4	1	1.1	2	1.7
Greenville	5	1.1	21	1.5	20	1.3
Greenwood	1	1.9	2	1.2	6	3.2
Hampton	1	11.6	1	3.5	1	2.9
Horry	2	0.9	14	1.9	18	2.3
Jasper	-	0	-	0	1	1.4
Kershaw	1	1.8	4	2.5	5	2.9
Lancaster	-	0	4	2.1	1	0.5
Laurens	2	3.8	3	1.8	9	5.0
Lee	-	0	1	6.8	-	0
Lexington	5	2.0	16	2.0	22	2.6
McCormick	-	0	-	0	1	12.3
Marion	-	0	2	5.1	3	6.1
Marlboro	-	0	-	0	-	0
Newberry	1	4.1	1	1.3	3	2.9
Oconee	2	2.7	5	2.2	5	2.2
Orangeburg	-	0	3	2.9	5	4.1
Pickens	3	2.8	11	3.4	5	1.4
Richland	5	2.5	8	1.3	6	0.9
Saluda	-	0	1	1.8	4	6.8
Spartanburg	3	1.1	22	2.8	23	2.7
Sumter	1	1.4	4	1.9	5	2.1
Union	1	5.2	2	3.4	4	6.0
Williamsburg	1	8.7	1	3.0	1	2.8
York	5	2.3	13	2.0	21	3.1

¹Race of mother

²Rates per 1,000 live births. Rates calculated with 20 or fewer deaths are unreliable and should be used cautiously.

Table 7-B.

Black and Other¹ Postneonatal Mortality and Postneonatal Mortality Rates²
 South Carolina and Each County, 2012, 2010-2012, 2007-2009
 (Residence Data)

County of Residence	2012		2010-2012		2007-2009	
	Number	Rate	Number	Rate	Number	Rate
South Carolina	86	4.3	251	4.2	272	4.1
Abbeville	-	0	1	3.7	4	13.7
Aiken	2	3.2	7	3.7	8	4.1
Allendale	-	0	-	0	6	18.3
Anderson	4	8.4	9	6.2	7	4.7
Bamberg	-	0	1	3.0	-	0
Barnwell	2	11.4	4	8.2	1	1.9
Beaufort	-	0	2	1.2	6	3.1
Berkeley	5	6.8	11	5.2	8	3.6
Calhoun	-	0	-	0	-	0
Charleston	5	3.0	22	4.2	26	4.2
Cherokee	-	0	1	1.9	2	3.4
Chester	1	4.9	1	1.7	1	1.5
Chesterfield	-	0	2	3.1	2	2.8
Clarendon	1	4.6	2	3.2	1	1.4
Colleton	3	13.9	4	6.1	6	7.8
Darlington	4	9.9	8	6.5	5	3.9
Dillon	1	3.9	3	3.8	2	2.3
Dorchester	-	0	5	3.1	3	1.7
Edgefield	-	0	-	0	-	0
Fairfield	1	6.9	2	4.1	1	1.8
Florence	10	10.4	18	6.4	16	5.2
Georgetown	2	6.8	4	4.7	5	5.1
Greenville	4	2.7	24	5.4	20	4.3
Greenwood	2	5.7	4	3.8	4	3.6
Hampton	-	0	-	0	-	0
Horry	6	9.1	14	7.3	7	3.5
Jasper	-	0	2	4.6	2	4.0
Kershaw	-	0	2	3.3	-	0
Lancaster	2	7.5	4	5.1	5	5.8
Laurens	-	0	1	1.3	3	3.7
Lee	1	7.6	2	5.0	1	1.9
Lexington	6	8.9	11	5.6	11	5.6
McCormick	1	27.8	1	8.7	-	0
Marion	-	0	2	2.4	5	5.1
Marlboro	-	0	-	0	3	4.5
Newberry	1	5.9	3	5.7	3	5.4
Oconee	-	0	-	0	1	4.4
Orangeburg	3	3.9	13	5.2	13	4.5
Pickens	-	0	-	0	-	0
Richland	10	3.6	30	3.6	34	3.9
Saluda	1	14.1	1	5.2	2	8.9
Spartanburg	-	0	5	1.7	13	4.1
Sumter	4	4.9	12	4.9	14	5.3
Union	-	0	1	3.0	2	5.2
Williamsburg	1	4.4	3	4.1	7	7.1
York	3	3.7	9	3.8	12	5.1

¹Race of mother

²Rates per 1,000 live births. Rates calculated with 20 or fewer deaths are unreliable and should be used cautiously.

Table 8.
Leading Causes of Infant Death by Age at Death
South Carolina, 2012
(Residence Data)

Cause of Infant Death (ICD-10 Codes)	Total	Under 1 Day	1-6 Days	7-27 Days	Neonatal (<28 days)	Post-Neonatal (28-364 days)
Total Infant Deaths	435	157	56	57	270	165
Congenital malformations, deformations, etc. (Q00-Q99)	72	25	11	14	50	22
Disorders related to short gestation and low birthweight, NEC (P07)	65	55	4	4	63	2
Accidents (V01-X59, Y85-Y86)	41	1	-	5	6	35
Sudden infant death syndrome (R95)	33	-	-	1	1	32
Fetus and newborn affected by maternal complications of pregnancy (P01)	22	19	3	-	22	-
Newborn affected by complication of placenta, etc. (P02)	21	21	-	-	21	-
Respiratory distress of newborn (P22)	18	6	8	4	18	-
Diseases of circulatory system (I00-I99)	12	1	1	1	3	9
Bacterial sepsis of newborn (P36)	12	1	3	7	11	1
Intrauterine hypoxia and birth asphyxia (P20-P21)	10	4	6	-	10	-
All other causes	129	24	20	21	65	64

Table 8a.
Leading Causes of White¹ Infant Death by Age at Death
South Carolina, 2012
(Residence Data)

Cause of Infant Death (ICD-10 Codes)	Total	Under 1 Day	1-6 Days	7-27 Days	Neonatal (<28 days)	Post-Neonatal (28-364 days)
Total White Infant Deaths	199	64	30	26	120	79
Congenital malformations, deformations, etc. (Q00-Q99)	39	14	7	8	29	10
Disorders related to short gestation and low birthweight, NEC (P07)	25	21	2	2	25	-
Accidents (V01-X59, Y85-Y86)	25	1	-	3	4	21
Sudden infant death syndrome (R95)	11	-	-	1	1	10
Newborn affected by complication of placenta, etc. (P02)	9	9	-	-	9	-
Respiratory distress of newborn (P22)	8	1	6	1	8	-
Intrauterine hypoxia and birth asphyxia (P20-P21)	6	1	5	-	6	-
Diseases of circulatory system (I00-I99)	5	-	-	-	-	5
Bacterial sepsis of newborn (P36)	4	1	1	2	4	-
Assault (Homicide) (X85-Y09, Y87.1)	4	-	-	-	-	4
All other causes	63	16	9	9	34	29

¹ Race of child

Table 8b.
Leading Causes of Black and Other¹ Infant Death by Age at Death
South Carolina, 2012
(Residence Data)

Cause of Infant Death (ICD-10 Codes)	Total	Under 1 Day	1-6 Days	7-27 Days	Neonatal (<28 days)	Post-Neonatal (28-364 days)
Total Black and Other Infant Deaths	236	93	26	31	150	86
Disorders related to short gestation and low birthweight, NEC (P07)	40	34	2	2	38	2
Congenital malformations, deformations, etc. (Q00-Q99)	33	11	4	6	21	12
Sudden infant death syndrome (R95)	22	-	-	-	-	22
Fetus and newborn affected by maternal complications of pregnancy (P01)	19	16	3	-	19	-
Accidents (V01-X59, Y85-Y86)	16	-	-	2	2	14
Newborn affected by complication of placenta, etc. (P02)	12	12	-	-	12	-
Respiratory distress of newborn (P22)	10	5	2	3	10	-
Diarrhea and gastroenteritis of infectious origin (A09)	8	-	-	-	-	8
Bacterial sepsis of newborn (P36)	8	-	2	5	7	1
Necrotizing enterocolitis of newborn (P77)	8	-	1	6	7	1
All other causes	60	15	12	7	34	26

¹ Race of child

Table 8c.
 Percent Changes of Leading Causes of Infant Death
 from 2011 to 2012, South Carolina

Cause of Infant Death Ranked by 2012 Data (ICD-10 Codes)	2011	2012	% Change
Total Infant Deaths	423	435	2.8%
Congenital malformations, deformations, etc. (Q00-Q99)	76	72	-5.3%
Disorders related to short gestation and low birthweight, NEC (P07)	63	65	3.2%
Accidents (V01-X59, Y85-Y86)	30	41	36.7%
Sudden infant death syndrome (R95)	45	33	-26.7%
Fetus and newborn affected by maternal complications of pregnancy (P01)	29	22	-24.1%
Newborn affected by complication of placenta, etc. (P02)	20	21	5.0%
Respiratory distress of newborn (P22)	14	18	28.6%
Diseases of circulatory system (I00-I99)	17	12	-29.4%
Bacterial sepsis of newborn (P36)	10	12	20.0%
Intrauterine hypoxia and birth asphyxia (P20-P21)	7	10	42.9%
All other causes	110	129	17.3%

Table 9.

Comparison of Characteristics for All Live Births, by Race¹
 Z-tests for differences in proportions³
 South Carolina, 2011 to 2012
 (Residence Data)

	2011		2012		Z-TEST	P-VALUE
	Percent	Number	Percent	Number		
MOTHER < 18 YEARS						
TOTAL ²	3.07	1,761	2.73	1,560	-3.4180	0.0006
White	2.41	902	2.19	811	-2.0479	0.0406
Black & Other	4.31	857	3.74	747	-2.8702	0.0041
MARITAL STATUS: UNMARRIED						
TOTAL ²	46.92	26,903	47.78	27,285	2.9288	0.0034
White	32.72	12,240	34.02	12,617	3.7434	0.0002
Black & Other	73.63	14,647	73.40	14,650	-0.5084	0.6112
< 5 PRENATAL CARE VISITS						
TOTAL ²	6.03	3,459	5.14	2,935	-6.5731	0.0000
White	5.17	1,933	4.05	1,501	-7.2952	0.0000
Black & Other	7.65	1,522	7.16	1,430	-1.8518	0.0641
PRENATAL CARE BEGAN FIRST TRIMESTER						
TOTAL ²	71.67	41,094	71.87	41,040	0.7672	0.4430
White	75.26	28,150	75.39	27,963	0.4207	0.6740
Black & Other	64.97	12,925	65.40	13,054	0.9109	0.3623
VERY LOW BIRTHWEIGHT						
TOTAL ²	1.86	1,064	1.79	1,023	-0.8099	0.4180
White	1.26	470	1.14	422	-1.4902	0.1362
Black & Other	2.99	594	3.01	600	0.1191	0.9052
LOW BIRTHWEIGHT						
TOTAL ²	9.86	5,654	9.55	5,453	-1.7764	0.0757
White	7.50	2,806	7.23	2,683	-1.4005	0.1614
Black & Other	14.31	2,846	13.87	2,768	-1.2550	0.2095

¹Race of mother

²Includes unknown races

³Proportions are expressed as percentages

Table 9. (continued)

Comparison of Characteristics for All Live Births, by Race¹
 Z-tests for differences in proportions³
 South Carolina, 2011 to 2012
 (Residence Data)

	2011		2012		Z-TEST	P-VALUE
	Percent	Number	Percent	Number		

PREMATURE BIRTHS (< 37 WEEKS)						
TOTAL ²	11.48	6,584	11.25	6,425	-1.2288	0.2192
White	10.27	3,841	9.82	3,642	-2.0411	0.0412
Black & Other	13.76	2,738	13.92	2,779	0.4642	0.6425

VERY PREMATURE BIRTHS (< 32 WEEKS)						
TOTAL ²	2.03	1,163	1.99	1,134	-0.5106	0.6097
White	1.47	548	1.37	507	-1.1334	0.2570
Black & Other	3.09	614	3.14	626	0.2879	0.7735

PREMATURE 32-36 WEEKS BIRTHS						
TOTAL ²	9.45	5,421	9.27	5,291	-1.0932	0.2743
White	8.80	3,293	8.45	3,135	-1.7081	0.0876
Black & Other	10.68	2,124	10.79	2,153	0.3564	0.7215

KOTELCHUCK INDEX: ADEQUATE, ADEQUATE PLUS						
TOTAL ²	73.86	42,349	74.54	42,561	2.6253	0.0087
White	76.24	28,519	77.25	28,653	3.2519	0.0011
Black & Other	69.42	13,811	69.56	13,884	0.3028	0.7621

KOTELCHUCK INDEX: INTERMEDIATE						
TOTAL ²	6.81	3,903	6.83	3,898	0.1316	0.8953
White	7.07	2,643	6.96	2,583	-0.5447	0.5859
Black & Other	6.32	1,257	6.57	1,312	1.0364	0.3000

KOTELCHUCK INDEX: INADEQUATE						
TOTAL ²	18.52	10,619	18.03	10,295	-2.1456	0.0319
White	15.88	5,941	15.20	5,638	-2.5705	0.0102
Black & Other	23.45	4,666	23.27	4,645	-0.4284	0.6684

HISPANIC MOTHER						
TOTAL ²	8.42	4,826	8.14	4,649	-1.6873	0.0915
White	12.13	4,538	11.66	4,324	-1.9992	0.0456
Black & Other	1.45	288	1.63	325	1.4653	0.1428

¹Race of mother

²Includes unknown races

³Proportions are expressed as percentages

Table 9-A.

Comparison of Characteristics of Infants who Died, by Race¹
 Z-tests for differences in proportions³
 South Carolina, 2011 to 2012
 (Residence Data)

	2011		2012		Z-TEST	P-VALUE
	Percent	Number	Percent	Number		

MOTHER < 18 YEARS						
TOTAL ²	4.96	21	3.91	17	-0.7520	0.4520
White	5.85	11	4.57	9	-0.5668	0.5708
Black & Other	4.26	10	3.36	8	-0.5081	0.6114

MARITAL STATUS: UNMARRIED						
TOTAL ²	64.78	274	63.91	278	-0.2652	0.7909
White	48.94	92	47.21	93	-0.3392	0.7344
Black & Other	77.45	182	77.73	185	0.0741	0.9409

< 5 PRENATAL CARE VISITS						
TOTAL ²	27.66	117	22.76	99	-1.6537	0.0982
White	27.13	51	17.77	35	-2.2044	0.0275
Black & Other	28.09	66	26.89	64	-0.2909	0.7711

PRENATAL CARE BEGAN FIRST TRIMESTER						
TOTAL ²	57.21	242	64.37	280	2.1474	0.0318
White	53.19	100	69.54	137	3.2968	0.0010
Black & Other	60.43	142	60.08	143	-0.0759	0.9395

VERY LOW BIRTHWEIGHT						
TOTAL ²	53.90	228	52.64	229	-0.3690	0.7122
White	44.15	83	42.13	83	-0.3995	0.6896
Black & Other	61.70	145	61.34	146	-0.0799	0.9363

LOW BIRTHWEIGHT						
TOTAL ²	67.38	285	64.83	282	-0.7883	0.4305
White	62.23	117	56.85	112	-1.0751	0.2823
Black & Other	71.49	168	71.43	170	-0.0146	0.9883

¹Race of mother

²Includes unknown races

³Proportions are expressed as percentages

Table 9-A. (continued)
 Comparison of Characteristics of Infants who Died, by Race¹
 Z-tests for differences in proportions³
 South Carolina, 2011 to 2012
 (Residence Data)

	2011		2012		Z-TEST	P-VALUE
	Percent	Number	Percent	Number		

PREMATURE BIRTHS (< 37 WEEKS)						
TOTAL ²	65.25	276	65.52	285	0.0828	0.9340
White	61.70	116	56.85	112	-0.9678	0.3331
Black & Other	68.09	160	72.69	173	1.0967	0.2728

VERY PREMATURE BIRTHS (< 32 WEEKS)						
TOTAL ²	53.66	227	54.02	235	0.1054	0.9161
White	44.68	84	44.16	87	-0.1023	0.9185
Black & Other	60.85	143	62.18	148	0.2981	0.7656

PREMATURE 32-36 WEEKS BIRTHS						
TOTAL ²	11.58	49	11.49	50	-0.0411	0.9672
White	17.02	32	12.69	25	-1.1960	0.2317
Black & Other	7.23	17	10.50	25	1.2501	0.2112

KOTELCHUCK INDEX: ADEQUATE, ADEQUATE PLUS						
TOTAL ²	64.30	272	71.03	309	2.1085	0.0350
White	61.70	116	74.11	146	2.6103	0.0090
Black & Other	66.38	156	68.49	163	0.4883	0.6253

KOTELCHUCK INDEX: INTERMEDIATE						
TOTAL ²	1.42	6	2.99	13	1.5625	0.1182
White	2.13	4	3.05	6	0.5661	0.5713
Black & Other	0.85	2	2.94	7	1.6636	0.0962

KOTELCHUCK INDEX: INADEQUATE						
TOTAL ²	29.08	123	20.46	89	-2.9261	0.0034
White	32.98	62	16.24	32	-3.8208	0.0001
Black & Other	25.96	61	23.95	57	-0.5046	0.6139

HISPANIC MOTHER						
TOTAL ²	6.62	28	3.68	16	-1.9528	0.0508
White	8.51	16	7.61	15	-0.3231	0.7466
Black & Other	0.85	2	0.42	1	-0.5902	0.5550

¹Race of mother

²Includes unknown races

³Proportions are expressed as percentages

Table 10.
 Infant Mortality Rates¹ by Race² and Birthweight³ Group
 South Carolina
 2010, 2011, and 2012
 (Residence Data)

Infant Mortality for Very Low Birthweight (0-1499 grams)									
	Total			White			Black & Other		
Year	Number of Live Birth	Number of Infant Death	Rate	Number of Live Birth	Number of Infant Death	Rate	Number of Live Birth	Number of Infant Death	Rate
2010	1,104*	215	194.7	452	92	203.5	651	123	188.9
2011	1,064	228	214.3	470	83	176.6	594	145	244.1
2012	1,023*	229	223.9	422	83	196.7	600	146	243.3

Infant Mortality for Intermediate Low Birthweight (1500-2499 grams)									
	Total			White			Black & Other		
Year	Number of Live Birth	Number of Infant Death	Rate	Number of Live Birth	Number of Infant Death	Rate	Number of Live Birth	Number of Infant Death	Rate
2010	4,678*	72	15.4	2,364	32	13.5	2,312	40	17.3
2011	4,590*	57	12.4	2,336	34	14.6	2,252	23	10.2
2012	4,430*	53	12.0	2,261	29	12.8	2,168	24	11.1

Infant Mortality for Normal Birthweight (2500+ grams)									
	Total			White			Black & Other		
Year	Number of Live Birth	Number of Infant Death	Rate	Number of Live Birth	Number of Infant Death	Rate	Number of Live Birth	Number of Infant Death	Rate
2010	52,462*	139	2.6	35,062	82	2.3	17,374	57	3.3
2011	51,651*	136	2.6	34,583	70	2.0	17,034	66	3.9
2012	51,608*	151	2.9	34,392	84	2.4	17,174	67	3.9

¹Rates per 1,000 live births

²Race of mother

³Does not include missing birthweights

*Includes unknown race

Table 10-A.
 Neonatal Mortality Rates¹ by Race² and Birthweight³ Group
 South Carolina
 2010, 2011, and 2012
 (Residence Data)

Neonatal Mortality for Very Low Birthweight (0-1499 grams)									
	Total			White			Black & Other		
Year	Number of Live Birth	Number of Infant Death	Rate	Number of Live Birth	Number of Infant Death	Rate	Number of Live Birth	Number of Infant Death	Rate
2010	1,104*	181	163.9	452	75	165.9	651	106	162.8
2011	1,064	197	185.2	470	74	157.4	594	123	207.1
2012	1,023*	187	182.8	422	72	170.6	600	115	191.7

Neonatal Mortality for Intermediate Low Birthweight (1500-2499 grams)									
	Total			White			Black & Other		
Year	Number of Live Birth	Number of Infant Death	Rate	Number of Live Birth	Number of Infant Death	Rate	Number of Live Birth	Number of Infant Death	Rate
2010	4,678*	42	9.0	2,364	22	9.3	2,312	20	8.7
2011	4,590*	29	6.3	2,336	17	7.3	2,252	12	5.3
2012	4,430*	29	6.5	2,261	19	8.4	2,168	10	4.6

Neonatal Mortality for Normal Birthweight (2500+ grams)									
	Total			White			Black & Other		
Year	Number of Live Birth	Number of Infant Death	Rate	Number of Live Birth	Number of Infant Death	Rate	Number of Live Birth	Number of Infant Death	Rate
2010	52,462*	41	0.8	35,062	26	0.7	17,374	15	0.9
2011	51,651*	27	0.5	34,583	12	0.3	17,034	15	0.9
2012	51,608*	53	1.0	34,392	27	0.8	17,174	26	1.5

¹Rates per 1,000 live births

²Race of mother

³Does not include missing birthweights

*Includes unknown race

Table 10-B.
 Postneonatal Mortality Rates¹ by Race² and Birthweight³ Group
 South Carolina
 2010, 2011, and 2012
 (Residence Data)

Postneonatal Mortality for Very Low Birthweight (0-1499 grams)									
	Total			White			Black & Other		
Year	Number of Live Birth	Number of Infant Death	Rate	Number of Live Birth	Number of Infant Death	Rate	Number of Live Birth	Number of Infant Death	Rate
2010	1,104*	34	30.8	452	17	37.6	651	17	26.1
2011	1,064	31	29.1	470	9	19.1	594	22	37.0
2012	1,023*	42	41.1	422	11	26.1	600	31	51.7

Postneonatal Mortality for Intermediate Low Birthweight (1500-2499 grams)									
	Total			White			Black & Other		
Year	Number of Live Birth	Number of Infant Death	Rate	Number of Live Birth	Number of Infant Death	Rate	Number of Live Birth	Number of Infant Death	Rate
2010	4,678*	30	6.4	2,364	10	4.2	2,312	20	8.7
2011	4,590*	28	6.1	2,336	17	7.3	2,252	11	4.9
2012	4,430*	24	5.4	2,261	10	4.4	2,168	14	6.5

Postneonatal Mortality for Normal Birthweight (2500+ grams)									
	Total			White			Black & Other		
Year	Number of Live Birth	Number of Infant Death	Rate	Number of Live Birth	Number of Infant Death	Rate	Number of Live Birth	Number of Infant Death	Rate
2010	52,462*	98	1.9	35,062	56	1.6	17,374	42	2.4
2011	51,651*	109	2.1	34,583	58	1.7	17,034	51	3.0
2012	51,608*	98	1.9	34,392	57	1.7	17,174	41	2.4

¹Rates per 1,000 live births

²Race of mother

³Does not include missing birthweights

*Includes unknown race

Figure 1
Percentage of Infant Deaths by Birthweight Group
South Carolina, 2010-2012 Residence Data

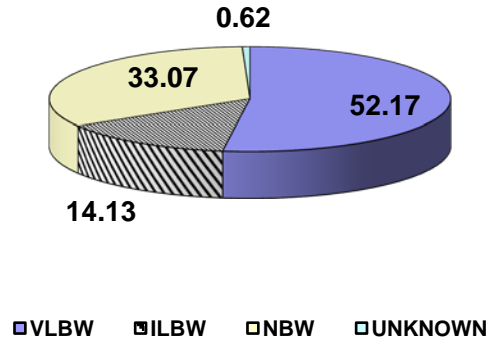


Figure 1-A
Percentage of White Infant Deaths by Birthweight Group
South Carolina, 2010-2012 Residence Data

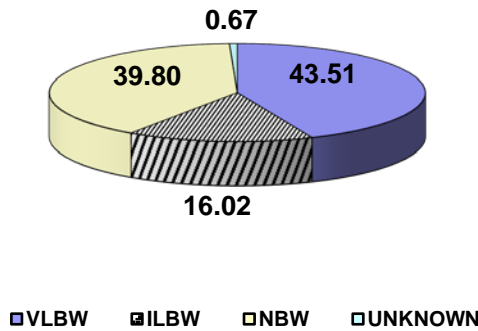


Figure 1-B
Percentage of Black and Other Infant Deaths by Birthweight Group
South Carolina, 2010-2012 Residence Data

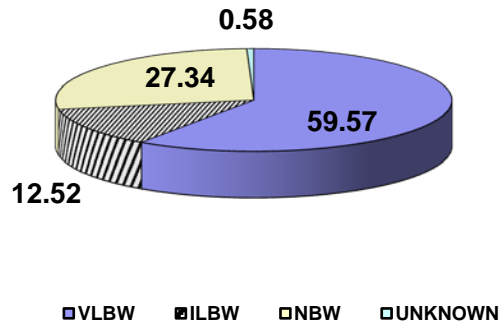
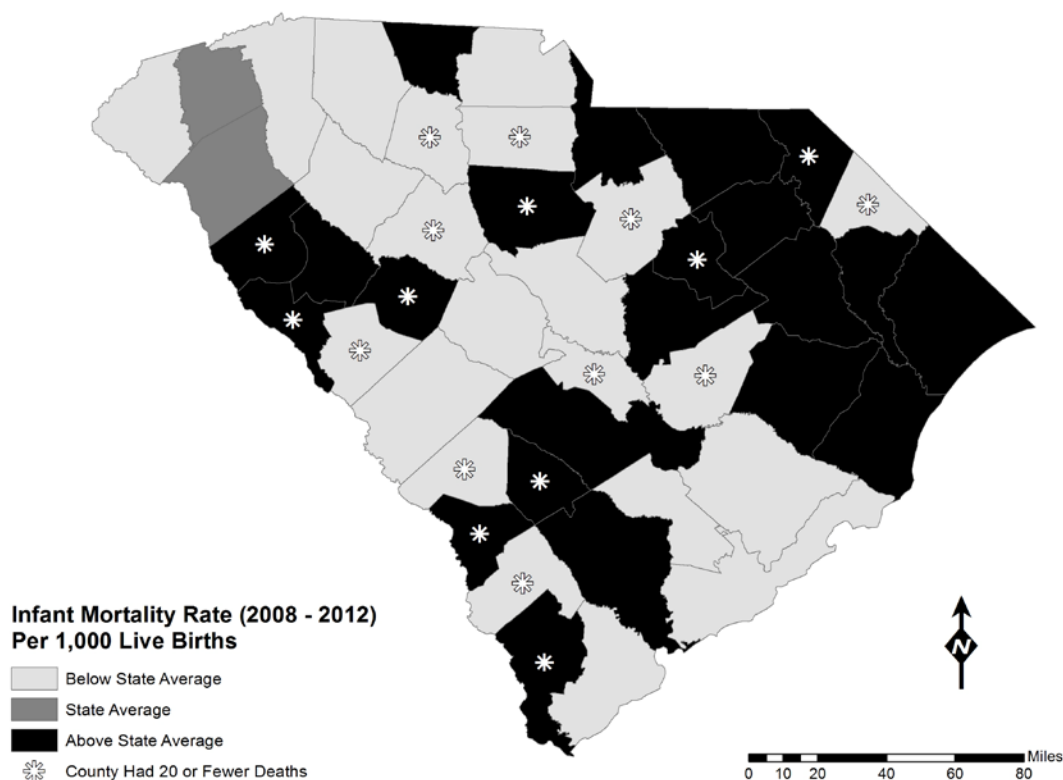


Figure 2.
Five Year Infant Mortality Rates by County
South Carolina
2008-2012
(Residence Data)



NOTE: Counties with rates calculated with 20 or fewer deaths are unreliable and should be used cautiously.

Above State Average indicates a rate greater than 7.8.
State Average indicates a rate between 7.2 and 7.8 inclusive.
Below State Average indicates a rate lower than 7.2.