

**SC DHEC Bureau of Laboratories
 2009 West Nile Virus Testing Summary**

Updated Wednesday, September 30, 2009

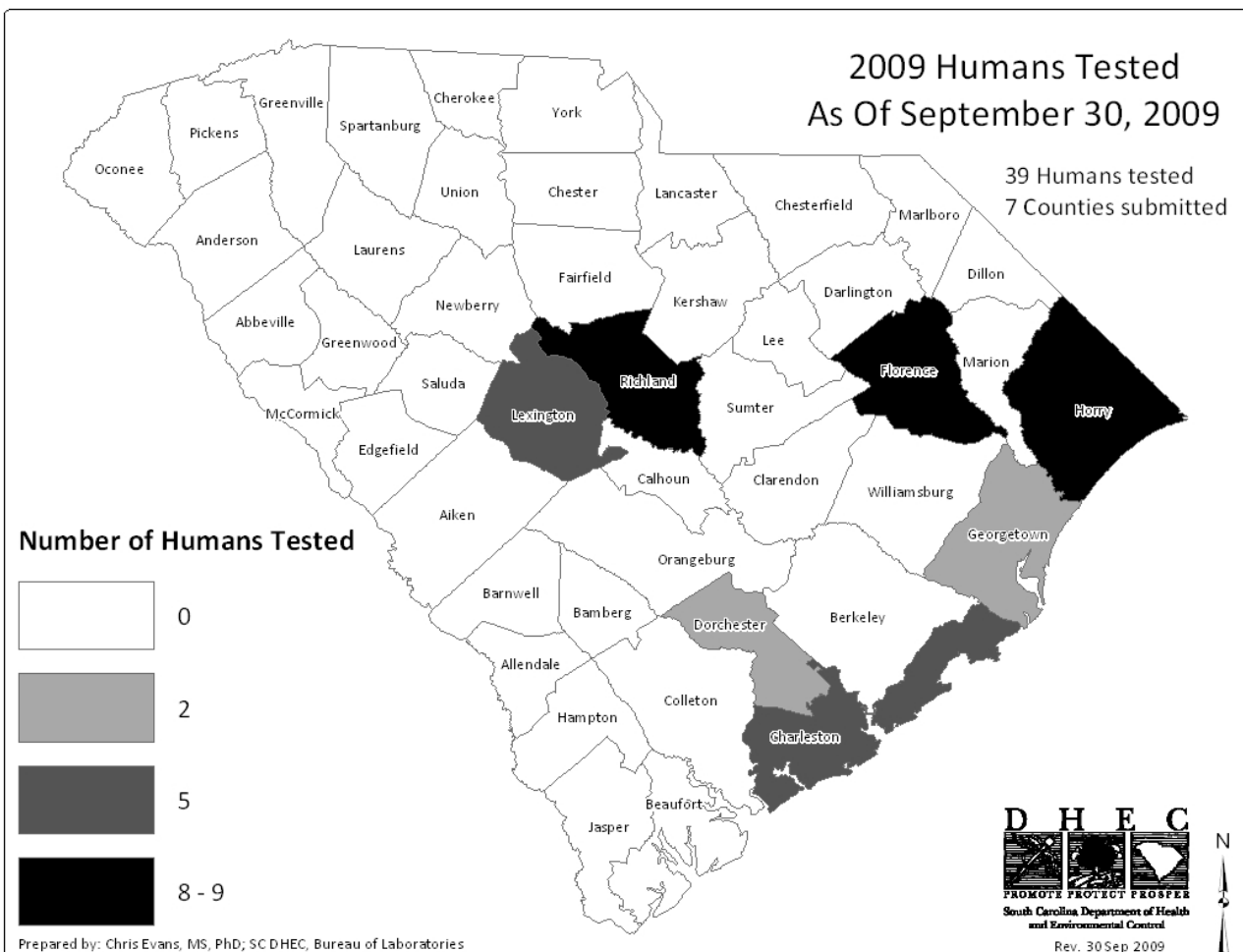
Statewide Totals:

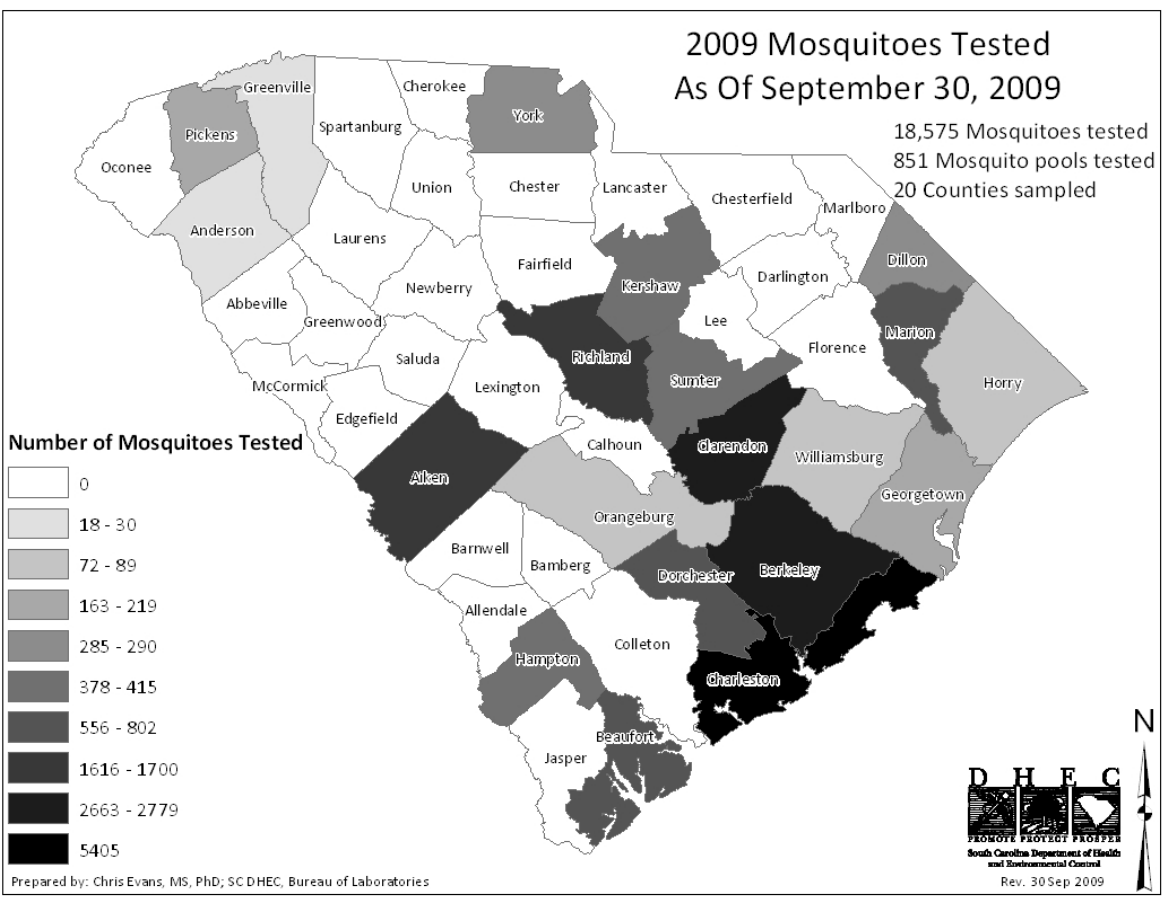
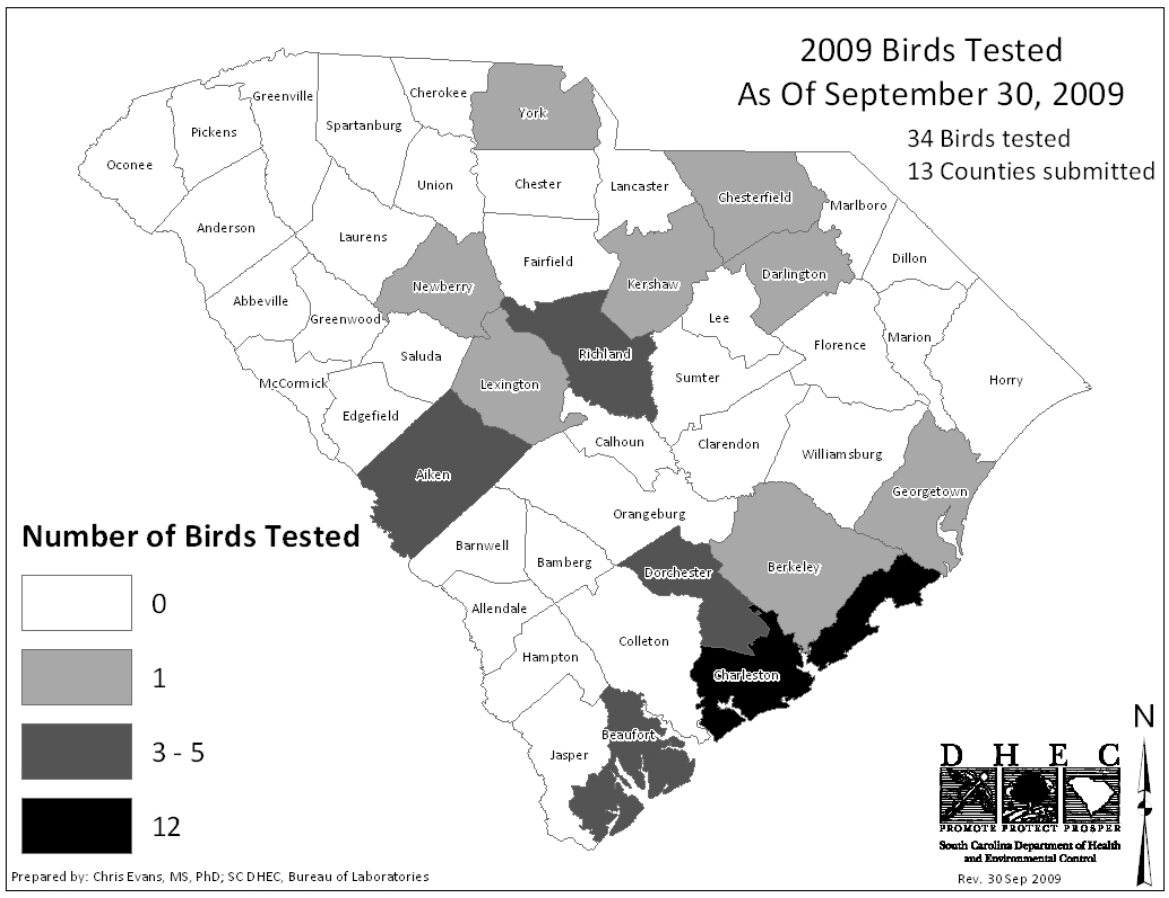
Type	Number Tested
Human	39
Bird	34
Mosquito	18,575 (851 mosquito pools [†])
Equine / Mammal	31 [‡]

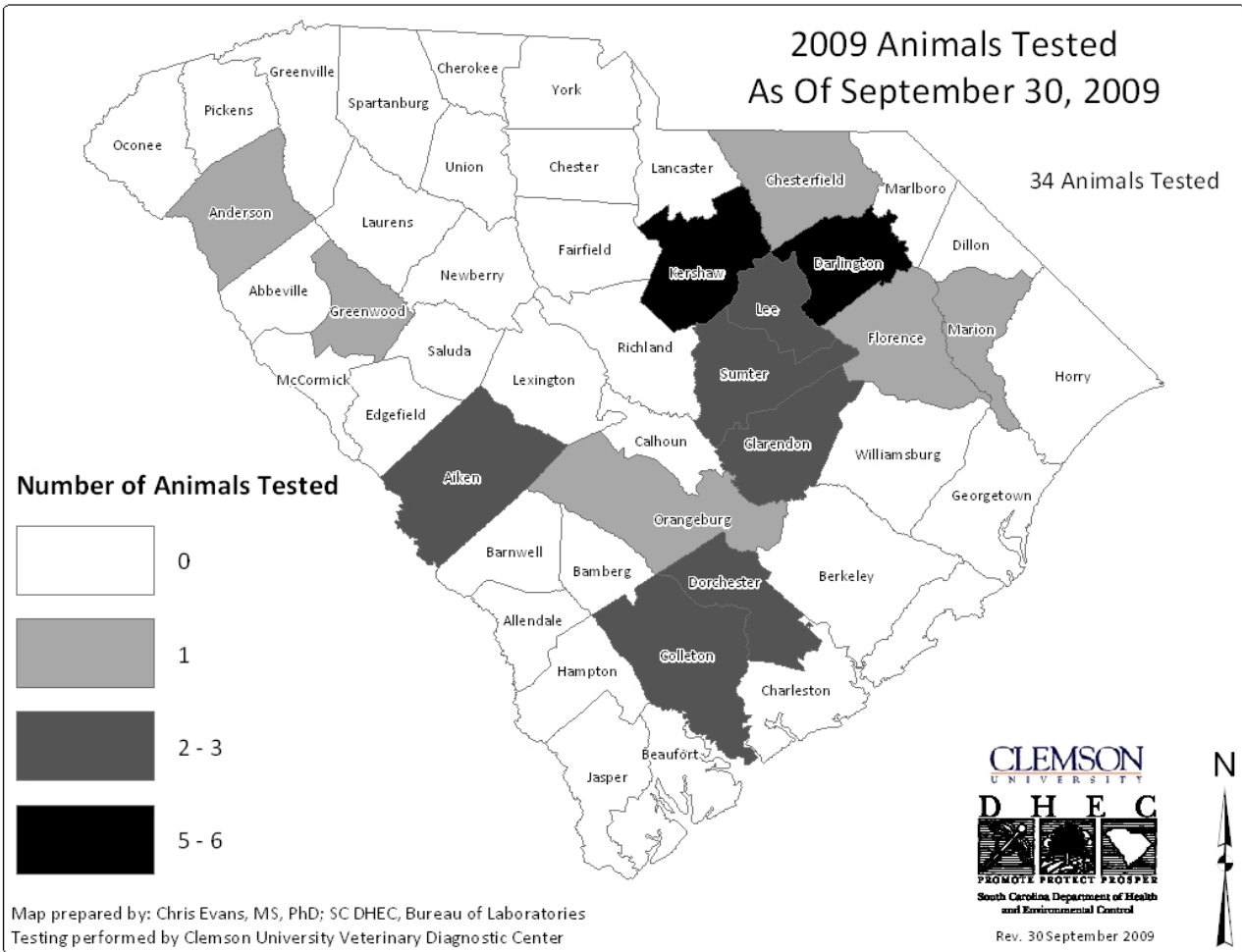
[†] Mosquito pools are groups of mosquitoes that are the same species and collected from the same location and date.

[‡] Clemson University Veterinary Diagnostic Center performs most of the WNV testing of horses/mammals.

2009 West Nile Virus Testing in South Carolina by County







Horses / mammals are not routinely tested at DHEC Bureau of Laboratories for WNV. Clemson University Veterinary Diagnostic Center performs most of the horse/mammal testing.