

APPLICATION I-002310
Sassafras Timber, LLC
Sassafras Mine

LOCATION INFORMATION:*

Dorchester County

TMS# 178-00-00-001

Latitude: 32.896427982

Longitude: -80.19134868

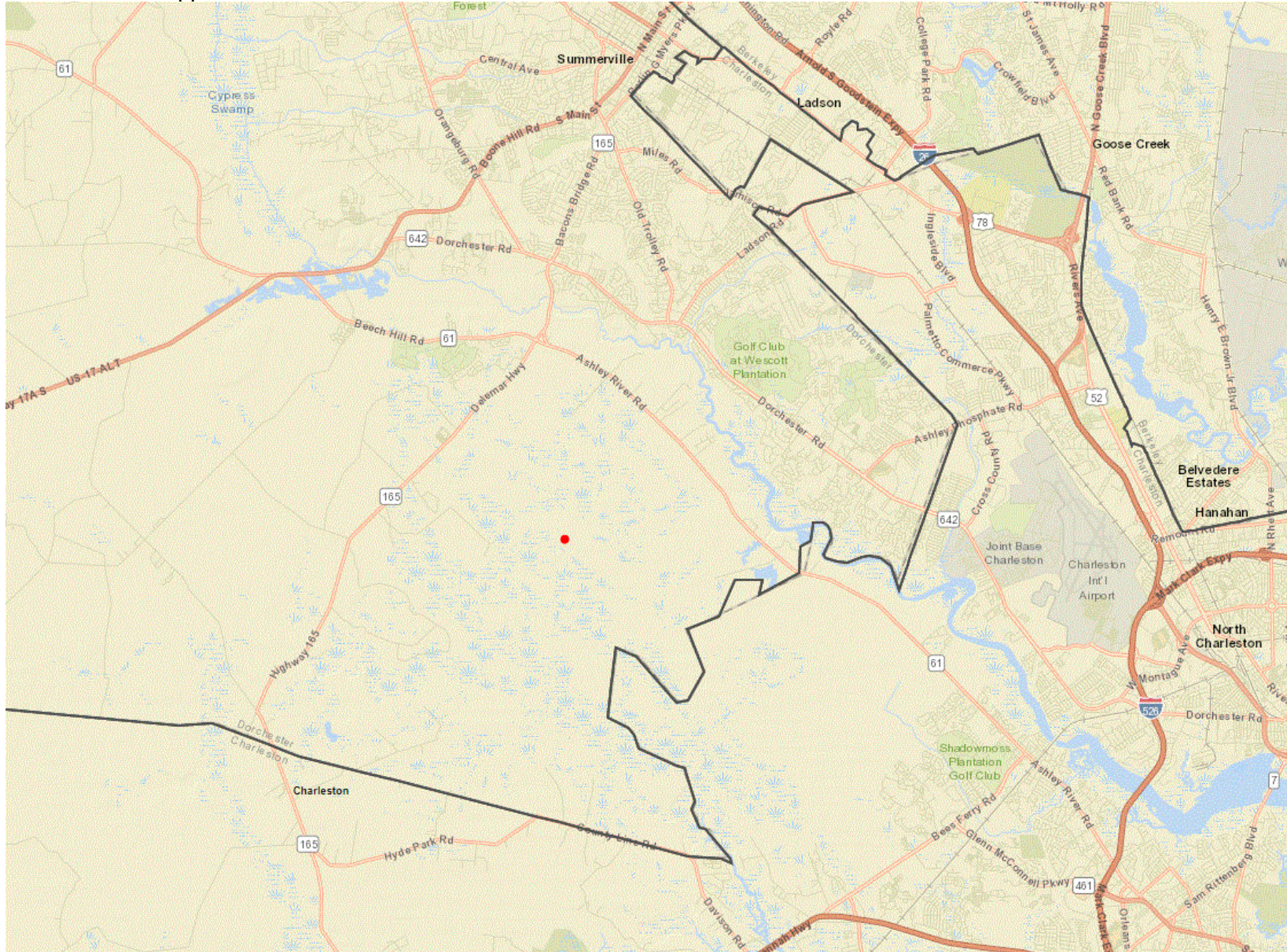
MAP INFORMATION:*

- 1) Location Map
- 2) Location - Aerial View
- 3) County GIS Parcel View Map
- 4) County GIS Parcel Aerial Map showing Access and Permit Area
- 5) Access Map
- 6) Mine Map
- 7) Reclamation Map
- 8) USGS Topographic Map – Stallville, SC Quadrangle

****Information included is provided by the applicant; details may change with the public notice/ technical review process. No decision has been made on this application.***

APPLICATION I-002310
Sassafras Mine, Sassafras Timber, LLC
Dorchester County, TMS#178-00-00-001

LOCATION MAP red dot approximate location



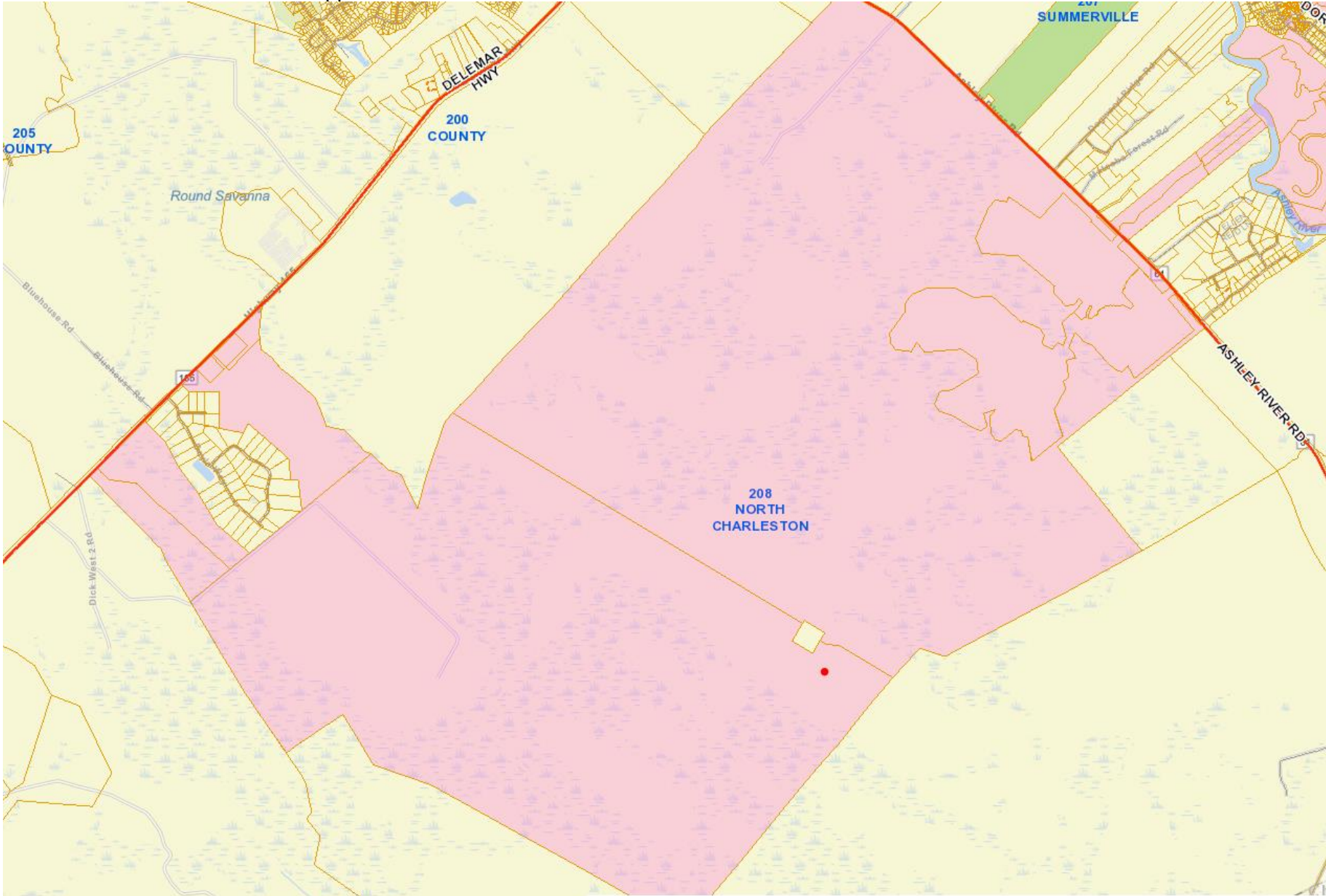
APPLICATION I-002310
Sassafras Mine, Sassafras Timber, LLC
Dorchester County, TMS#178-00-00-001

LOCATION MAP - Aerial View red dot approximate location



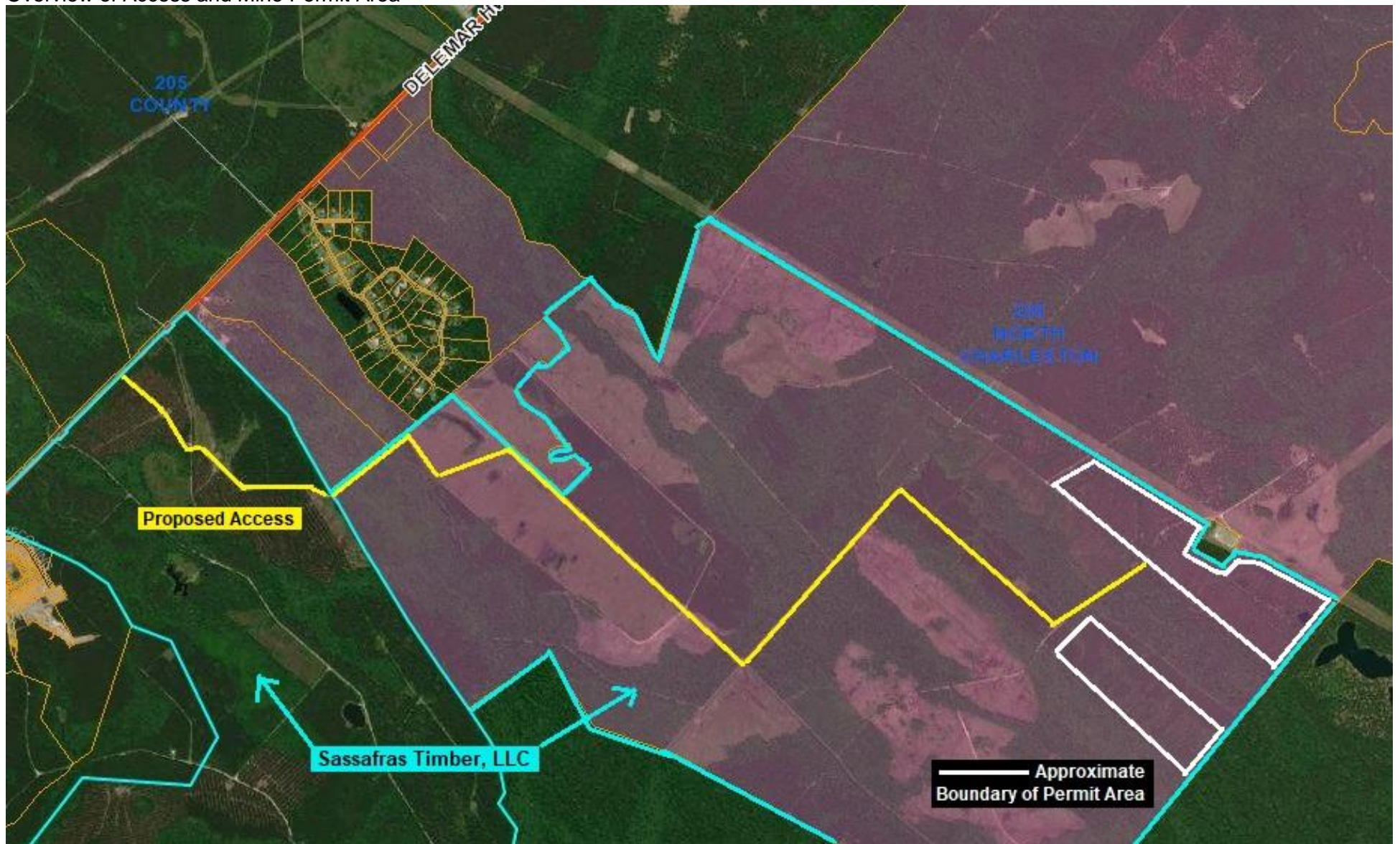
APPLICATION I-002310
Sassafras Mine, Sassafras Timber, LLC
Dorchester County, TMS#178-00-00-001

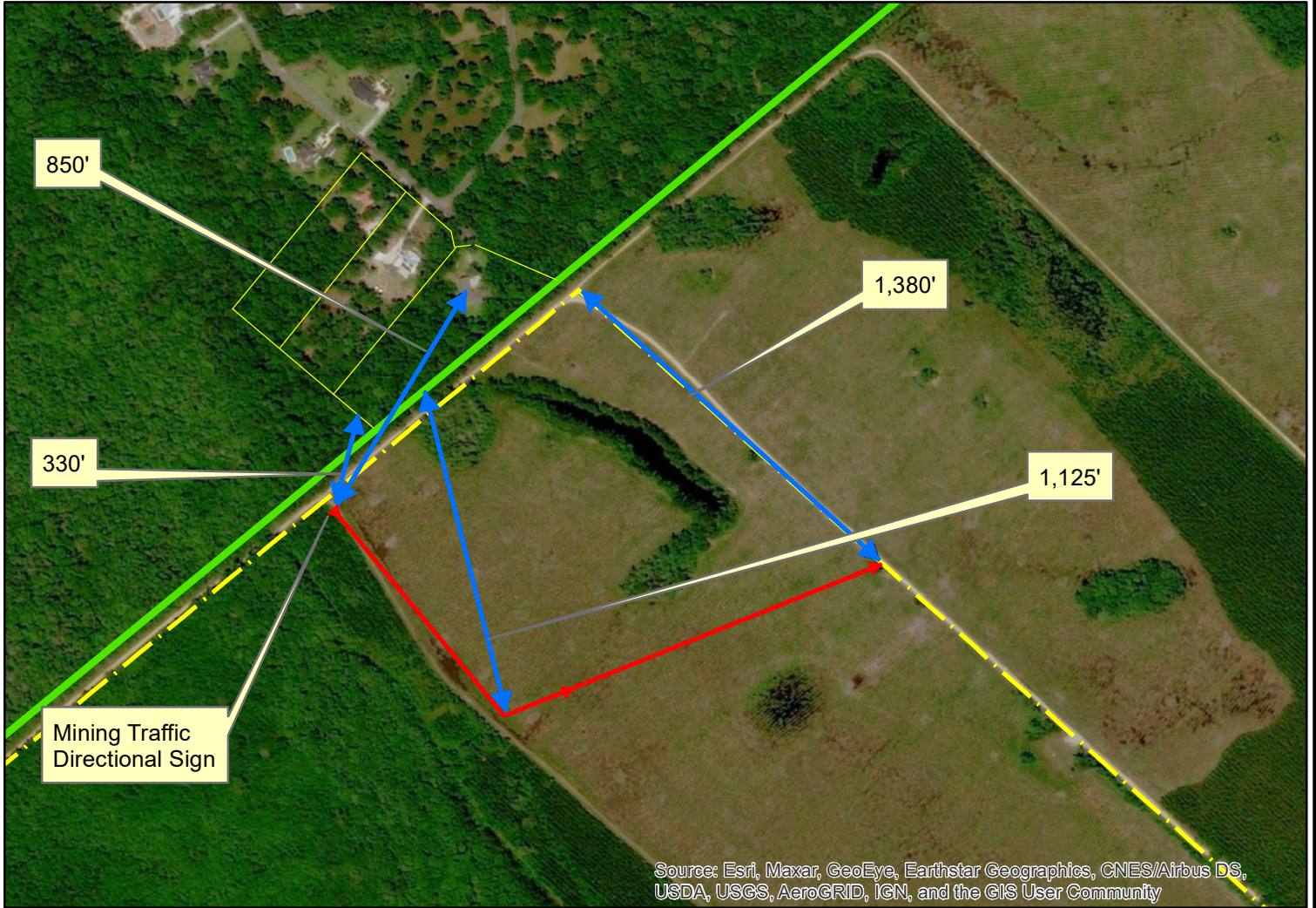
GIS MAP - Parcel View red dot approximate location



Application I-002310
Sassafras Mine, Sassafras Timber LLC
Dorchester County, TMS#178-00-00-001

Overview of Access and Mine Permit Area





Legend

- Dimension Reference
- Residential Lots
- Revised Route
- Access Road - Original
- Parcel Boundary

Access Map

Project #: 01-4482m Date: 2/23/21

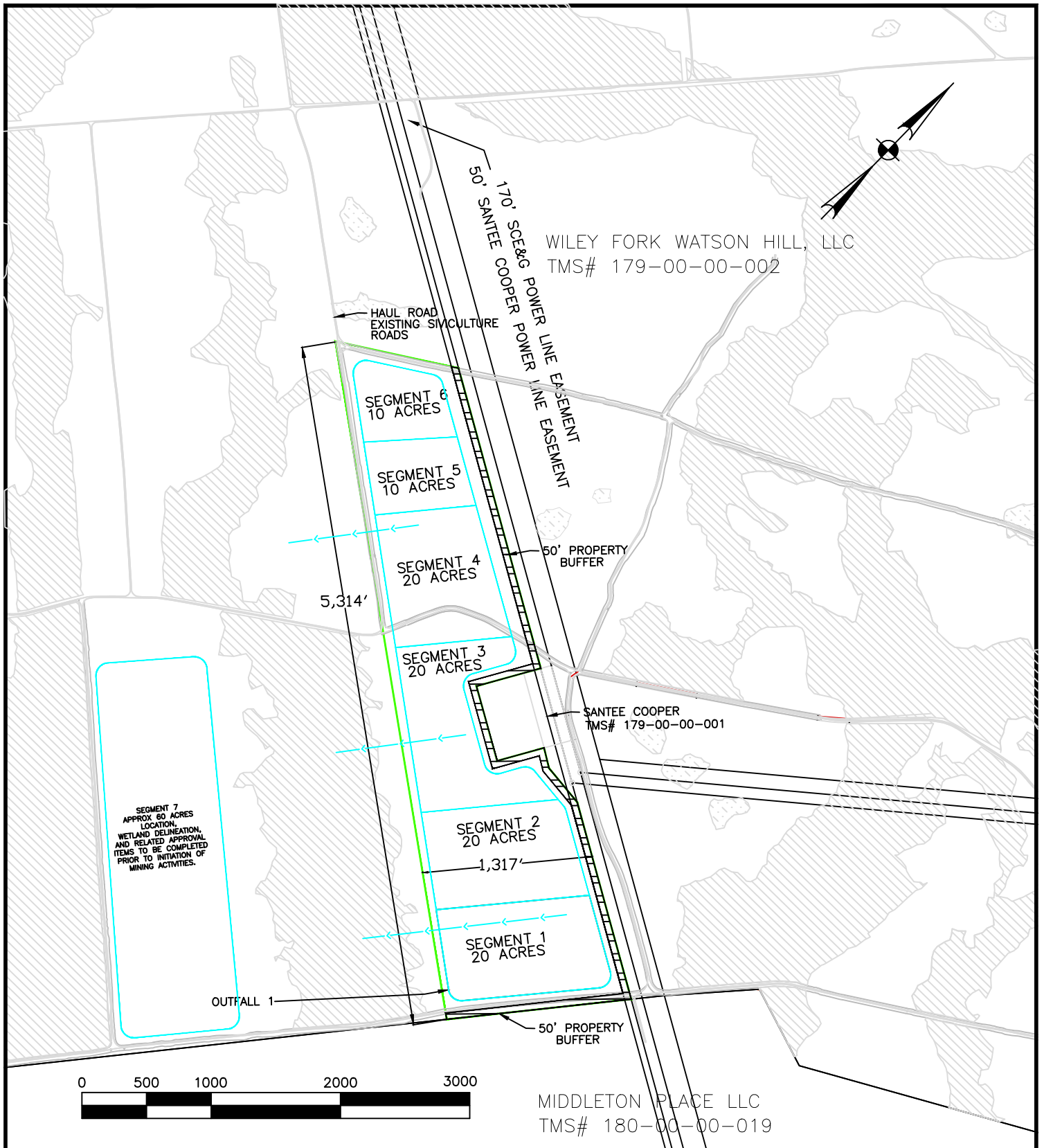
Created by: JRD Revised: 5/24/21



Sassafras Mine, North Charleston, SC
 Sassafras Timber, LLC
 14120 Ballantyne Corp. Place, Suite 525
 Charlotte, NC 28277



MINE MAP



MINE MAP	
PROJECT #: 01-4482	DATE: 07/10/20
CREATED BY: JRD	REVISED: 2/23/21

Sassafras Mine, North Charleston, SC
 Sassafras Timber, LLC
 14120 Ballantyne Corp. Place, Suite 525
 Charlotte, NC 28277



Newkirk

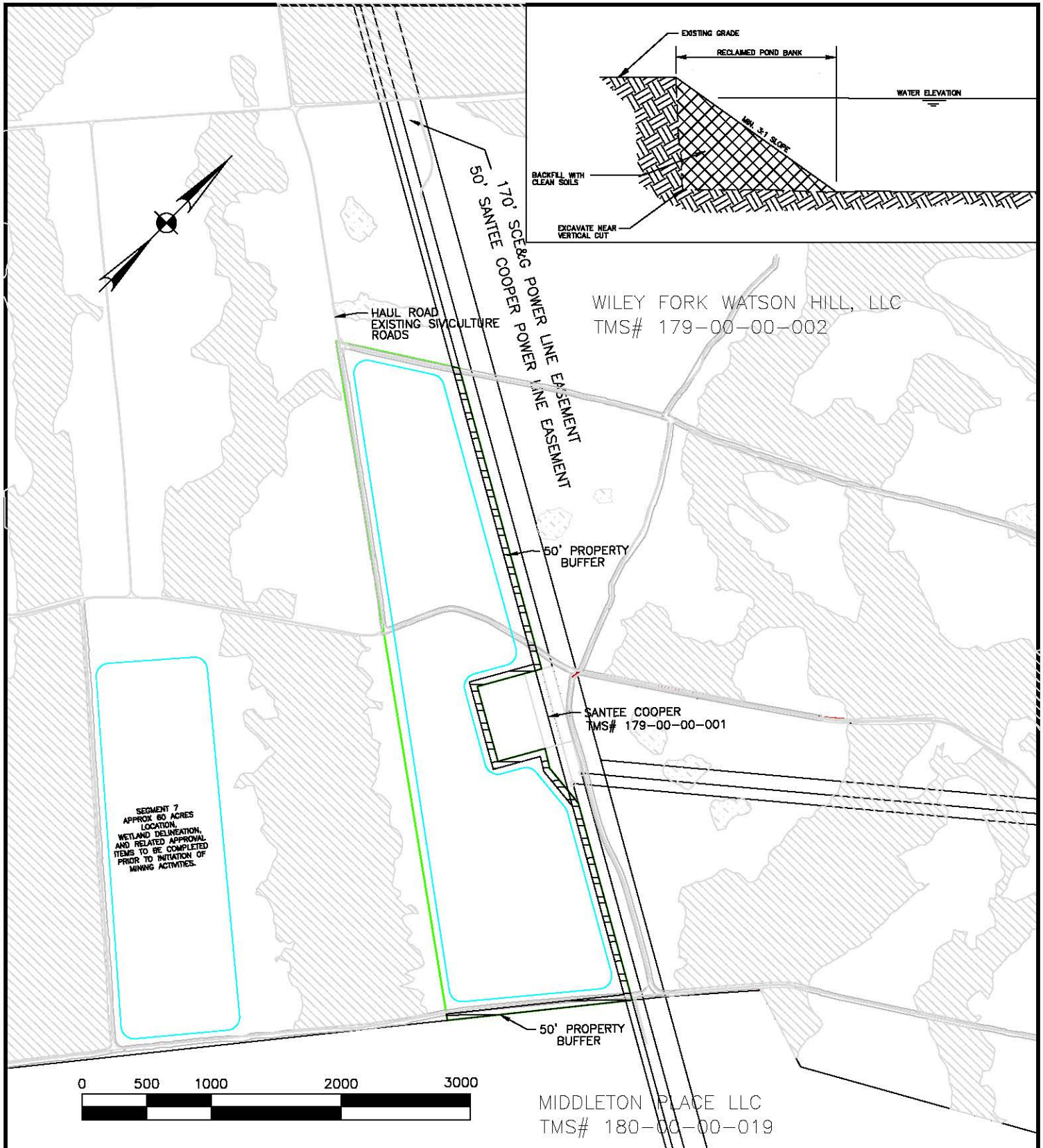
ENVIRONMENTAL INC.

←←←←← DRAINAGE FLOW ARROWS

USACE JURISDICTIONAL WETLANDS (J)

NON-JURISDICTIONAL WETLANDS (NJ)

RECLAMATION MAP



RECLAMATION MAP		Sassafras Mine, North Charleston, SC Sassafras Timber, LLC 14120 Ballantyne Corp. Place, Suite 525 Charlotte, NC 28277	
PROJECT #: 01-4482	DATE: 07/10/20		
CREATED BY: JRD	REVISED: 03/01/21		



Newkirk

ENVIRONMENTAL INC.

	USACE JURISDICTIONAL WETLANDS (J)
	NON-JURISDICTIONAL WETLANDS (NJ)

APPLICATION I-002310
Sassafras Mine, Sassafras Timber, LLC
Dorchester County, TMS#178-00-00-001

USGS Topographic Map – Stallville, SC Quadrangle red dot approximate location

