

Proposed Pineland Mine **PUBLIC MEETING**

- ✓ To avoid echoing or feedback, all lines will be muted.
- ✓ At the end of the presentation, we will unmute and call upon those who signed up to speak.
- ✓ This virtual meeting will be recorded and posted on our webpage.

Option to Call In

If you are experiencing audio problems, join the virtual meeting by phone:

Phone number: **1 864-558-7311**

Access Code: **429080399#**



Exits the meeting. (If you accidentally exit the meeting, you can rejoin.)



Be smart. Stay 6 feet apart.

scdhec.gov/COVID19



Stop the Spread of COVID-19



Wash
hands often



Stay home
while sick



Cover coughs
and sneezes



Clean
surfaces often

scdhec.gov/COVID19





Proposed Pineland Mine

Mine Operating Permit
Application I-002279

Dorchester County

PUBLIC MEETING

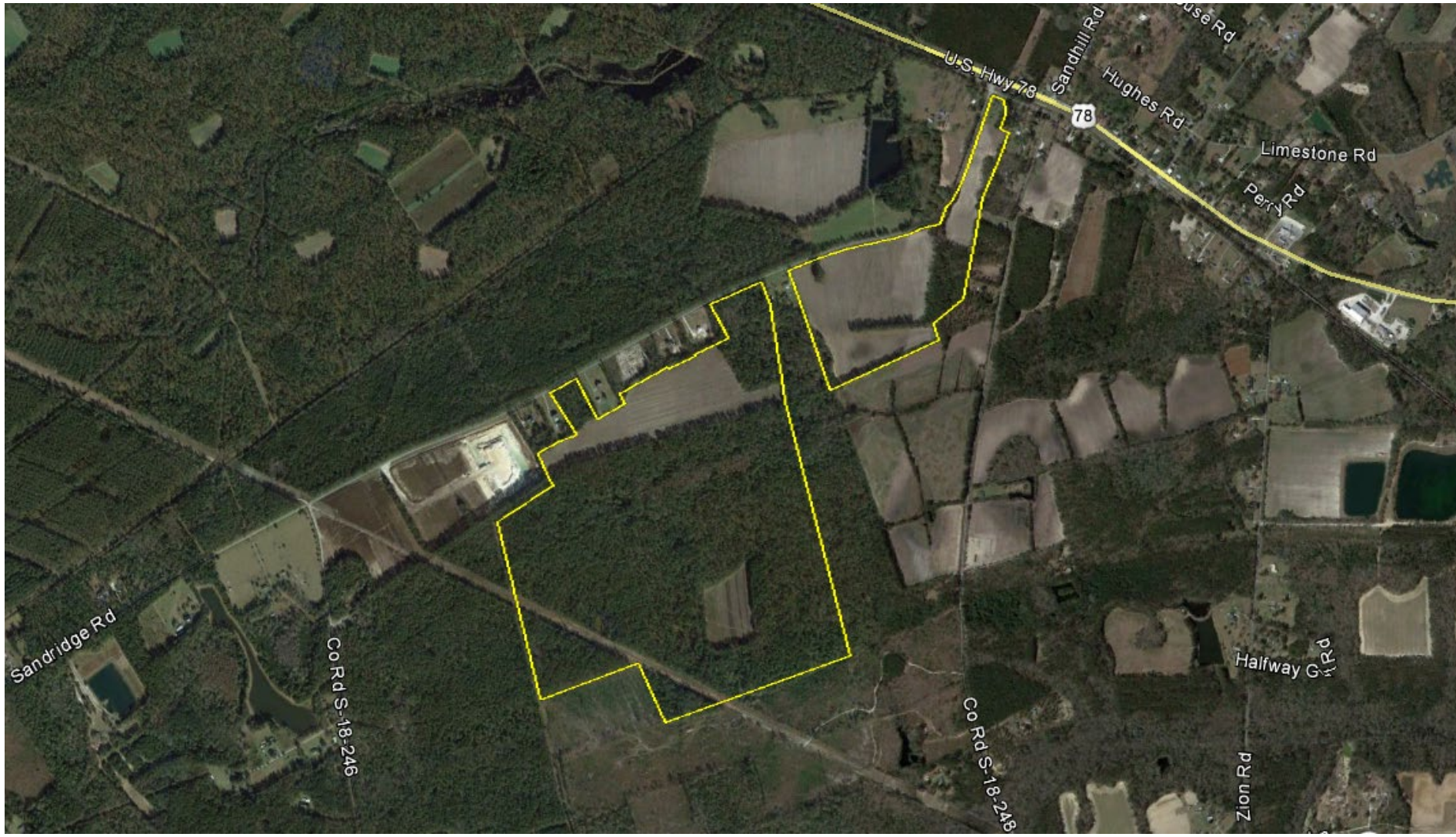


Agenda

- Gathering Time & Instructions for Participating Remotely
- Introductions & Opening Remarks
- Overview of Proposed Mine
- Discussion
- Closing Remarks

Tonight's Topics

- General Information about the site
- Proposed Permitted Area
- Mine Permitting Process
- Reclamation
- Next Steps



Other DHEC Permits

- Office of Coastal Resource Management
 - Coastal Zone Consistency Determination
- Bureau of Water
 - National Pollution Discharge Elimination System (NPDES)

Existing General Permits

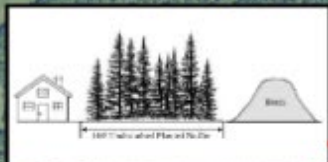
- Two General Mine Operating Permits (GP1) for the Excavation of Topsoil or Sand/Clay
 - Limits the mining of each general permit area to a maximum of five acres and a depth of 20 feet
 - No processing of material is allowed
 - Coverage was granted on March 17, 2020
- Two NPDES General Permit (SCG730000) coverages
 - Addresses water quality of stormwater and wastewater from the site
 - Coverage was granted on February 12 and March 17, 2020

DHEC's approval for general permit coverage does not guarantee that an individual mine operating permit will be issued

Proposed Permitted Area

- 318.0 total acres
 - 62.3 acres of affected area
 - Includes two existing general mine permits
 - 125.9 acres of buffer
 - 129.8 acres of future mining reserves

THE APPROXIMATE WETLAND BOUNDARIES DEPICTED ON THIS MAP ARE NOT FINAL AND ARE SUBJECT TO CHANGE BY THE U.S. ARMY CORPS OF ENGINEERS.

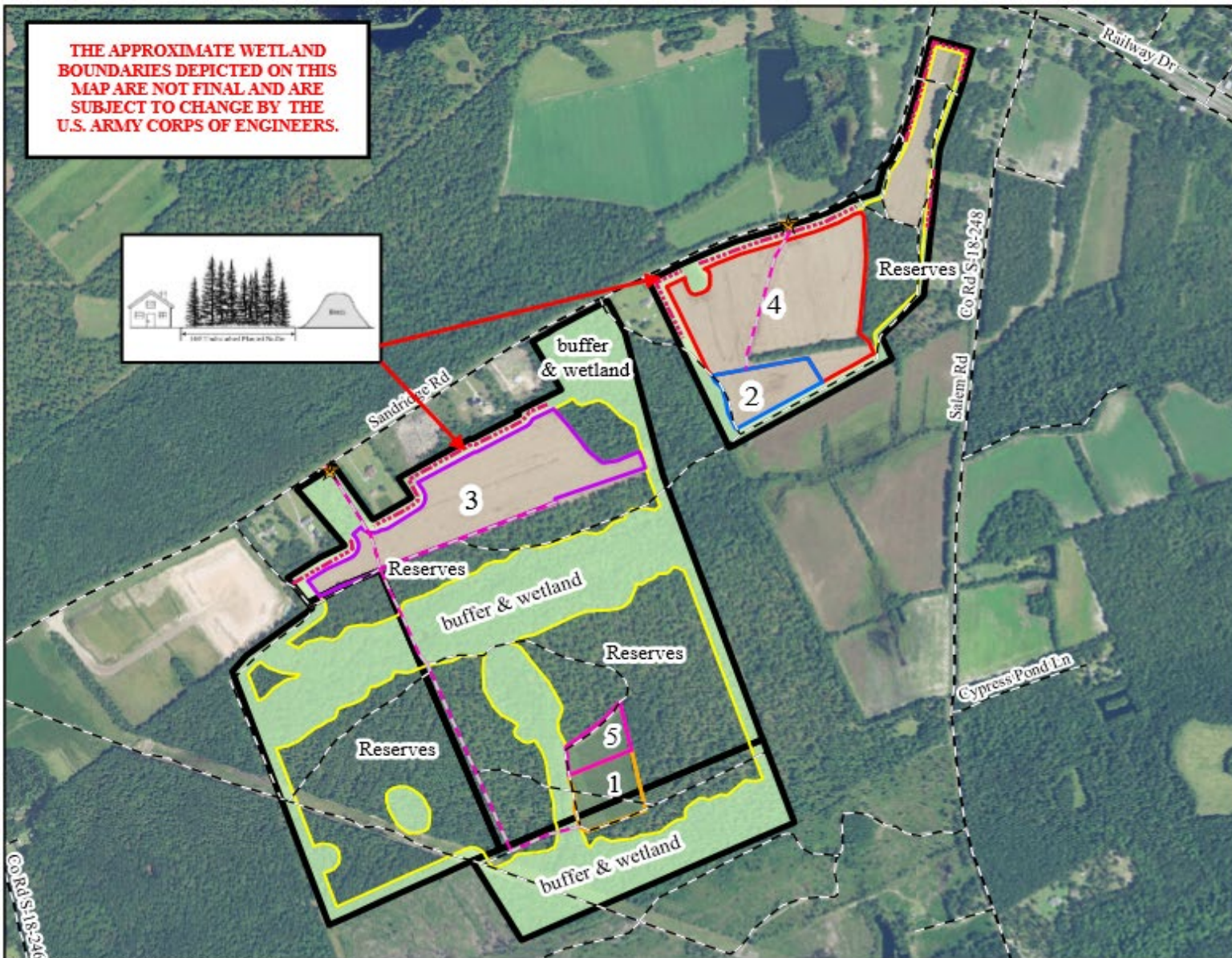


MINE SEGMENTS AND FUTURE RESERVES MAP

APPLICANT:
SANDRIDGE HOLDINGS, LLC

OWNER:
SANDRIDGE HOLDINGS, LLC

PREPARED BY:
Stephen Bennett
SABINE & WATERS, INC.
July 30, 2019



PERMIT ACRES	313.0 acres
AFFECTED ACRES	62.3 acres
Segment 1 (GP1-002180)	5.0
Segment 2 (GP1-002181)	5.0
Segment 3	22.3
Segment 4	27.0
Segment 5	3.0
FUTURE RESERVES	129.8 acres
BUFFER AREA (buffers, wetlands)	125.9 acres

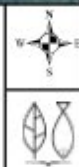
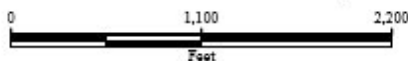
LEGEND

- 100FT PLANTED BUFFER & BERM
- HAUL ROADS
- ROADS
- ACCESS POINTS

EXTERNAL SOURCES: DORCHESTER COUNTY GIS PARCELS, NAIP 2011 TRUE COLOR AERIALS

Created By: Stephen Bennett
Date Created: July 29, 2019
Copyright 2019 Sabine & Waters, Inc.
Environmental Land Management Consultants
P.O. Box 1073 Summerville, SC 29484
Tel: 871.4243 (phone) 843.871.2050 (fax)
E: cbenett@sandridge_land_holdings.com
mapping:sgenent_and_future_reserves.mxd

MINE SEGMENTS AND FUTURE RESERVES MAP
PINELAND MINE
DORCHESTER COUNTY, SC



Disclaimer: This map is a graphic representation of data obtained from various sources. All efforts have been made to warrant the accuracy of this map. Moreover, Sabine & Waters, Inc. disclaims all responsibility and liability for the use of this map.

REVISED: 2/19/2020

Proposed Mining Process

- Clearing of trees and vegetation
- Topsoil removed and stockpiled into berms and then vegetated
- Pit developed and dewatered as needed
- Sand mined and loaded onto haul trucks with no further processing



Example of an active sand mine

Proposed Mining Process (cont.)

- No more than 30 feet below the ground surface
- Life of mine is expected to be 10 years
- Applicant may request to mine permitted future reserve areas (requires DHEC approval)

Reclamation

Reclamation is the planned process for restoring the affected land to a useful purpose while protecting natural resources of the surrounding area.

- Reclamation plan included in application
 - Will be reclaimed to ponds and grasslands
 - Land is sloped and graded during the mining process
 - Stockpiled topsoil used to enhance vegetation
- Reclamation bond is required to ensure that reclamation is completed



Example of a reclaimed sand mine

Mine Permitting Timeline

September 19, 2019	Mine application received
February 27 and March 5, 2020	Public Notice of Intent to Mine published in <i>Post & Courier Newspaper</i>
July 23, 2020	Public meeting
August 7, 2020	Public comment period closes

Next Steps

- DHEC will review all comments received and make a final decision
- DHEC will provide notification of final decision and a written response to all comments to everyone on mailing list
- Final decision date begins 15-day appeal period

How to Comment

Submit comments by mail or email through

August 7, 2020 to:

Mason Brandes
DHEC/BLWM
2600 Bull Street
Columbia, SC 29201
brandemd@dhec.sc.gov

Additional information can be found at:

www.scdhec.gov/PinelandMine



DHEC Contacts

Central office

Mining and Reclamation
Section

Attn: **Mason Brandes**

2600 Bull St.

Columbia, SC 29201

(803) 898-1369

brandemd@dhec.sc.gov

Local office

Lowcountry EA Charleston
Office

Attn: **Jonathan Summa**

(843) 953-0150

summajt@dhec.sc.gov

www.scdhec.gov/PinelandMine

Proposed Pineland Mine **PUBLIC MEETING**



To avoid echoing or feedback, all lines will be muted.



At the end of the presentation, we will unmute and call upon those who signed up to speak.

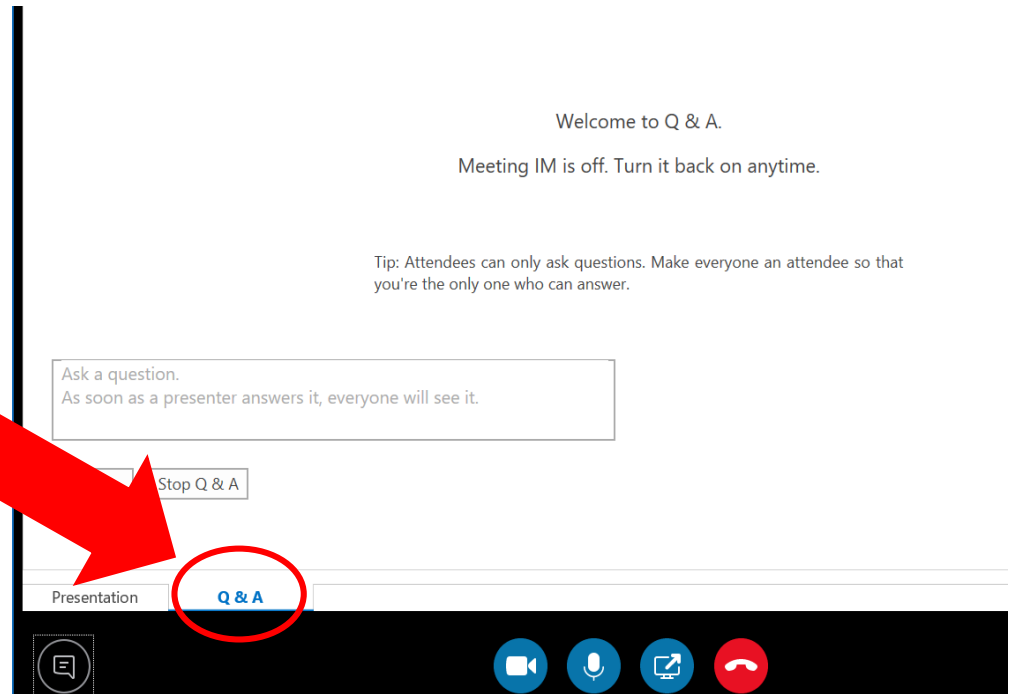


This virtual meeting will be recorded and posted on our webpage.

Question & Answer Session

You can verbally ask questions using your computer's microphone or your phone.

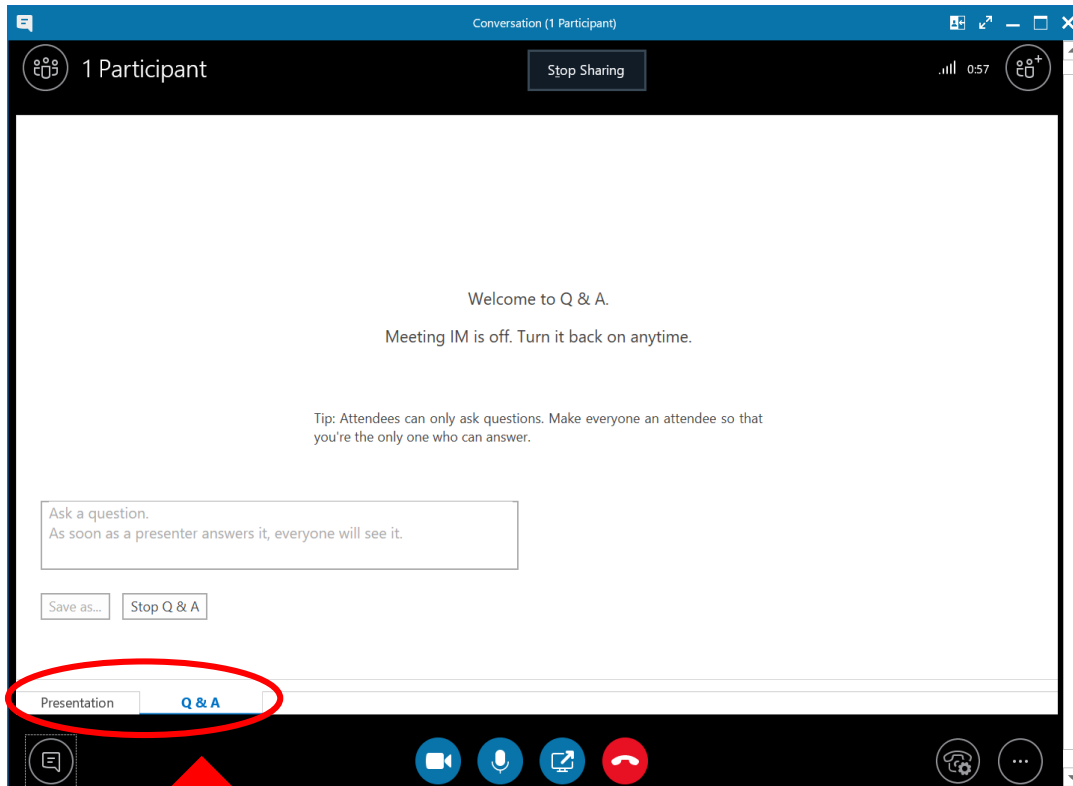
You can also use the Q & A Board to enter your questions.



Call in option

Phone number: 1 864-558-7311 | Access Code: 429080399#

Questions



Use the Q & A Board to enter your questions.

A facilitator will read questions posted on the Q & A Board.

Question & Answer Session

- ✓ Will include oral and written questions
- ✓ Unmute to indicate you would like to speak
- ✓ Unmuted lines will be called on to speak



Muted
(no one in the meeting
can hear you)



Unmuted
(everyone in the
meeting can hear you)



Call in option

Phone number: **1 864-558-7311** | Access Code: **429080399#**



DHEC Staff

Bureau of Land & Waste Management Division of Mining & Solid Waste Management

Juli Blalock Assistant Bureau Chief

Joe Koon Section Manager

Mason Brandes Project Hydrogeologist

Office of Coastal Resource Management Coastal Zone Consistency Section

Chris Stout Section Manager

Bureau of Water Industrial Wastewater Permitting Section

Brett Caswell Environmental Engineer

Bureau of Environmental Health Services Charleston Office

Wendy Boswell Area Director

Jonathan Summa Environmental Health Manager

THE APPROXIMATE WETLAND BOUNDARIES DEPICTED ON THIS MAP ARE NOT FINAL AND ARE SUBJECT TO CHANGE BY THE U.S. ARMY CORPS OF ENGINEERS.

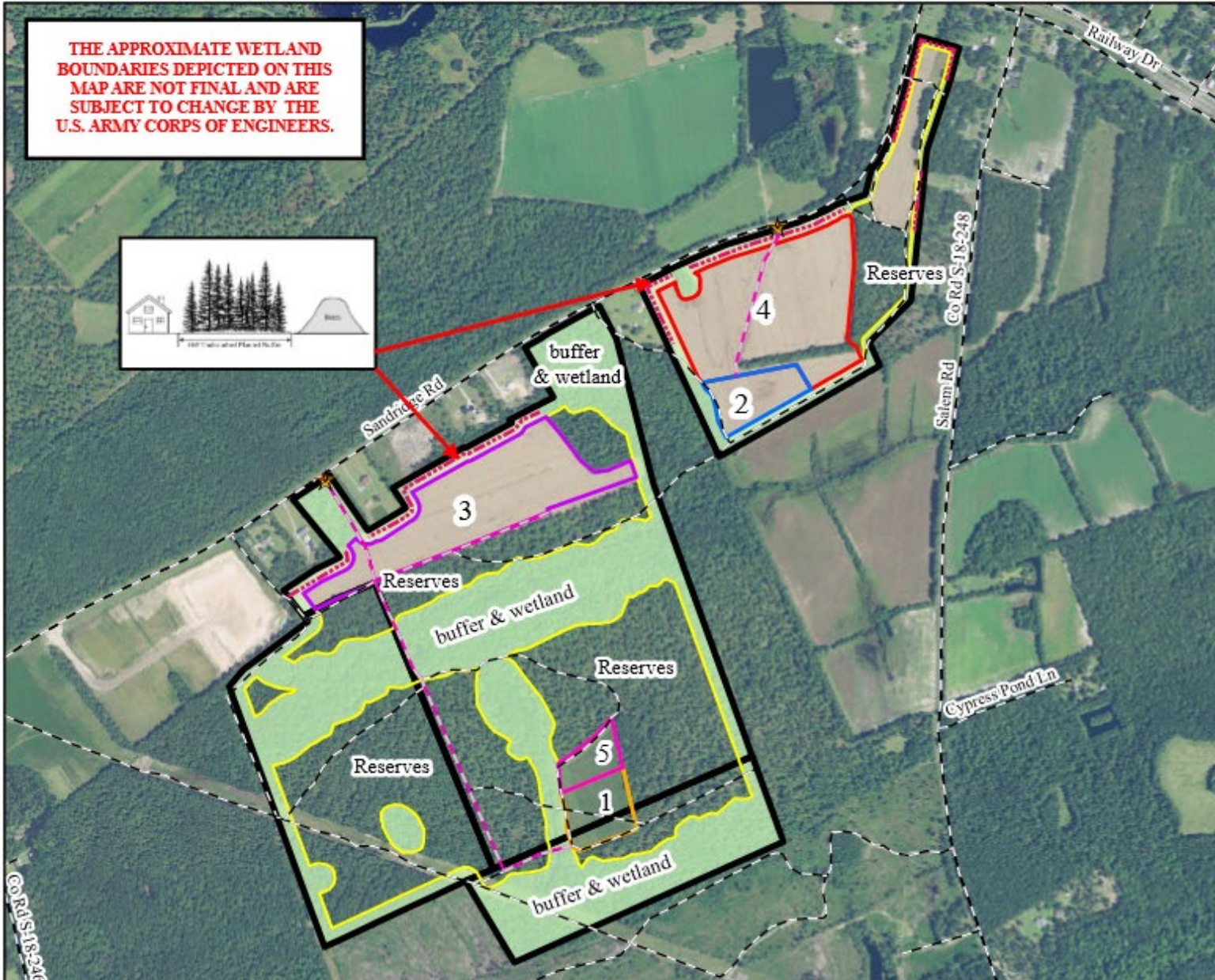


MINE SEGMENTS AND FUTURE RESERVES MAP

APPLICANT:
SANDRIDGE HOLDINGS, LLC

OWNER:
SANDRIDGE HOLDINGS, LLC

PREPARED BY:
Stephen Bennett
SABINE & WATERS, INC.
July 30, 2019



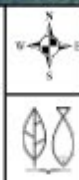
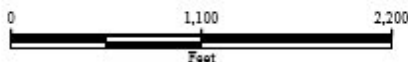
PERMIT ACRES	313.0 acres
AFFECTED ACRES	62.3 acres
Segment 1 (GP-1-002280)	5.0
Segment 2 (GP-1-002281)	5.0
Segment 3	22.3
Segment 4	27.0
Segment 5	3.0
FUTURE RESERVES	129.8 acres
BUFFER AREA (buffers, wetlands)	125.9 acres

LEGEND

- 100FT PLANTED BUFFER & BERM
- HAUL ROADS
- ROADS
- ★ ACCESS POINTS

EXTERNAL SOURCES: DORCHESTER COUNTY GIS PARCELS, DATE 2/11/2019 FROM COLOR AERIALS
 Created By: Stephen Bennett
 Date Created: July 29, 2019
 Copyright 2019 Sabine & Waters, Inc.
 Environmental Land Management Consultants
 P.O. Box 1075 Summerville, SC 29484
 Tel: 811-2188 (phone) 843-871-2050 (fax)
 E: cws@sandridge-land-holdings.com
 mapping@sginc.com and future_reserves.mxd

MINE SEGMENTS AND FUTURE RESERVES MAP
 PINELAND MINE
 DORCHESTER COUNTY, SC



REVISED: 2/19/2020

Disclaimer: This map is a graphic representation of data obtained from various sources. All efforts have been made to warrant the accuracy of this map. However, Sabine & Waters, Inc. disclaims all responsibility and liability for the use of this map.



South Carolina Department of Health and Environmental Control

www.scdhec.gov
(803) 898-DHEC (3432)

Stay Connected

